



<i>Part Number:</i> <u>13709</u>	<i>Revision:</i> <u>D</u>	<i>Effective Date:</i> <u>03/14/03</u>	<i>By:</i> <u>J. INGERSLEV</u>
<i>Document Type (indicate):</i>			
<input type="radio"/> Bill of Material	<input checked="" type="radio"/> <b>Drawing (may be attached)</b>	<input type="radio"/> Specification	
<input checked="" type="radio"/> <b>Assembly Instructions</b>	<input type="radio"/> Operating Procedure	<input type="radio"/> Other	

## **Tonneau Cover Installation Instructions**

### **I. Parts Included in Kit:**

12021	TONNEAU COVER	EA	1.00
13030	LIFT-A-DOT SOCKET	EA	32.00
13031	LIFT-A-DOT PLATE	EA	32.00
13032	LIFT-A-DOT STUD	EA	32.00
12156	WASHER, TONNEAU COVER	EA	32.00
12263	TONNEAU COVER	EA	1.00
12156	TONNEAU COVER INSTRUCTIONS	EA	1.00

### **II. Tools Required:**

- Tape Measure
- 9mm socket
- 1/8" Drill bit
- Slip Joint Pliers covered with tape
- Drill
- Razor knife
- Marker
- Duct Tape

### **III. Installation Instructions**

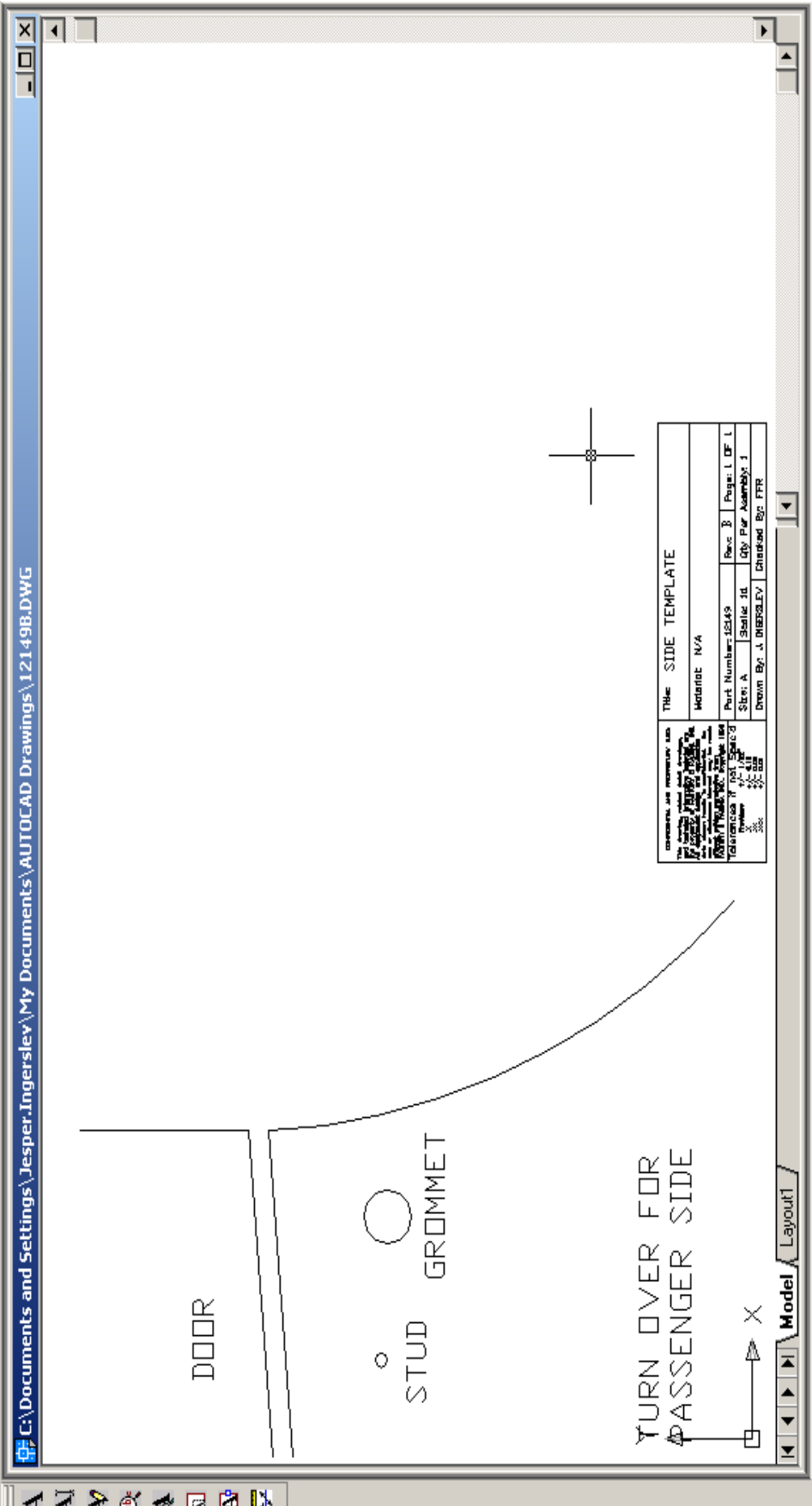
1. Use the rear diagram, marker and a tape measure to mark the position of the rear stud on the body.
2. Use the side template to mark the position of the stud. Do not mark the grommet, it is for the convertible top if used.
3. Fit the cover around the Roll Bar.
4. Fit the cover around the Steering wheel.
5. Fit the cover around the rearview mirror use duct tape to hold the stretched cover to the body. The rearview mirror is offset to the passenger side one inch.
6. Stand back from the car and see how straight the zipper looks. Adjust it if necessary.
7. The marks made on the body should be under some marks on the Tonneau cover.
8. Stretch the fabric for a good fit and remark the position for a post if necessary.

9. Allow one inch of cover overlap so that the snap plates can have enough material.
10. Drill an 1/8" hole through the Tonneau and the body where marked.
11. Screw in the Lift-A-Dot posts with a washer underneath using a 9mm socket.
12. Center a Lift-A-Dot snap top (with the spikes on it) over the drilled hole in the cover so that the words can be read while standing next to the cover.
13. Press the snap onto the cover so that the spikes leave an indentation.
14. Remove the snap and drill an 1/8" hole through the top vinyl layer of the Tonneau on the marks left by the spikes.
15. Push the spikes through the Tonneau cover and through the lower flat snap part.
16. Using pliers with tape over them to prevent scratching, bend the spikes down towards the outside of the snap.
17. With a razor, cut the material away from the center of the snap so that you can see through the cover.
18. Push the snap down onto the post until it clicks.
19. Do the three posts that are marked and then work from the rear center snap to the sides stretching the cover as you go.
20. Once the rear part of the cover is done, stretch the cover forward and do the center snaps next to the rearview mirror. A second pair of hands might help to hold the cover in place.
21. Work towards the outside of the car.
22. If you find yourself making any mistakes, cut bait and find a professional top person to finish.

Insert Format Tools Draw Dimension Modify Window Help

ByLayer ByColor

C:\Documents and Settings\Jesper.Ingerslev\My Documents\AUTOCAD Drawings\121-49B.DWG



Title		SIDE TEMPLATE	
Material		N/A	
Part Number	2249	Rev.	B
Sheet	14	Page	1 of 1
Drawn By	J. INGERSLEV	Checked By	FFR

AutoCAD LT 2000/AutoCAD 2000 format file.  
g\_model.

SNAP GRID ORTHO POLAR OSNAP LWT MODEL

Inbox - Microsoft Outlook Microsoft Excel - BOM11X

AutoCAD LT

14.2000

Start

8:54 AM



