



Factory Five Racing, Inc.

Part Number: 33770

Revision: F

Effective Date: 05/10/16

By: J. INGERSLEV

Document Type (indicate):

Bill of Material

Drawing (may be attached)

Specification

Assembly Instructions

Operating Procedure

Other

Hot Rod LS Engine Installation Instructions

Parts needed

Exhaust Manifolds



Hooker 8501 LS engine swap manifolds.

Bellhousing



We suggest the Silversport Transmission 621 Aluminum bellhousing for LS w/o inspection cover. Trans fitment - Chevy TKO. shiftsst.com - \$249.95

Pilot Bearing



Small bearing (GM# 14061685, Timken 57080, Morosso 41100). It was used in all of the RWD LS V8 cars that GM made from 97-04 in the Y body, 98-02 in the F body and 04-06 in the GTO.

Summit racing \$14.95

Flywheel

168 tooth flywheel

Clutch

26 spline clutch

Hydraulic clutch actuator



We suggest the American Powertrain Hydramax Hydraulic clutch release systems HMGM01101SR.
Summit racing - \$607.97

Transmission



GM TKO 500 or 600

Installation

Make sure there is no pilot bearing in the end of the crank shaft already.



Install the small pilot bearing so that it is flush with the stepped area.





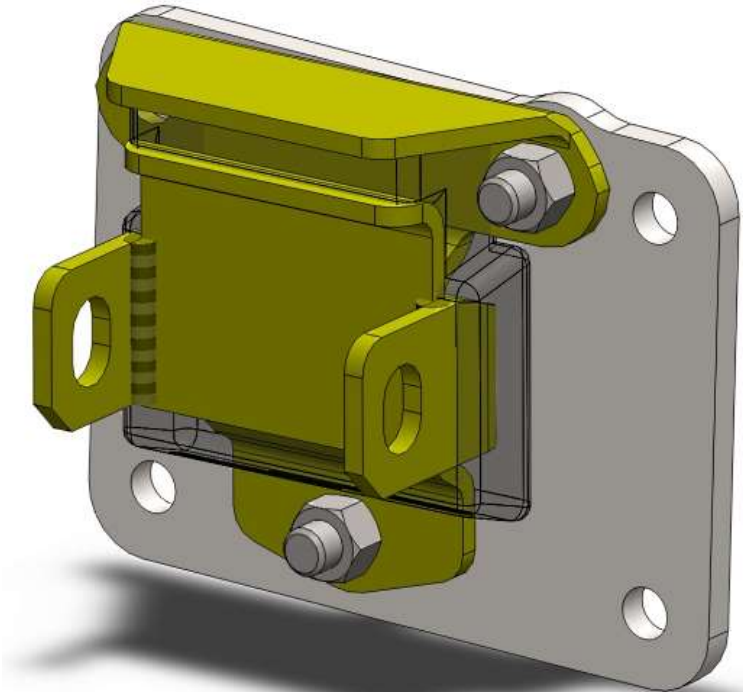
Install your flywheel and clutch.
Attach the bellhousing to the engine. Keep in mind, not all of the bolts holes on the engine will be used.



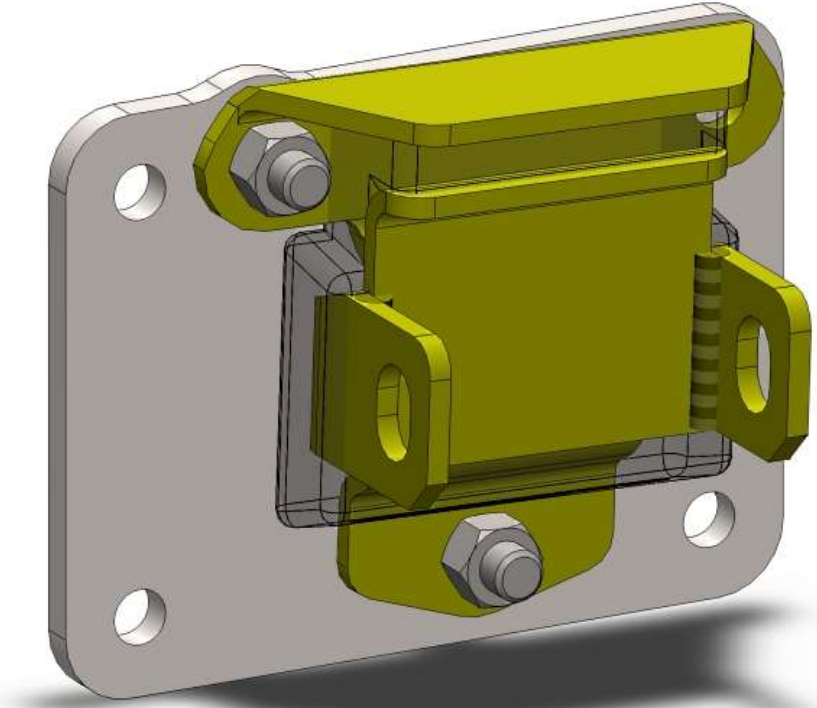
Attach the transmission to the engine.

Attach the polyurethane engine mount to the 1/4" plate using a 3/8"x 1" bolt provided.

⚠ Do not use the yellow zinc engine mount backing plates that comes with the polyurethane mounts.

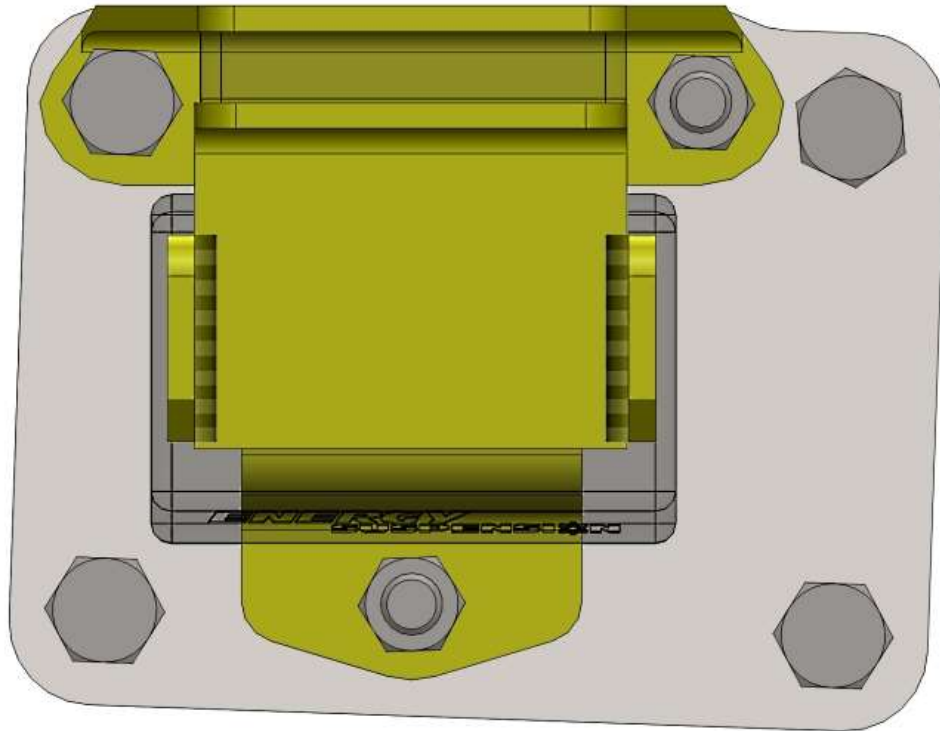


Left Side.

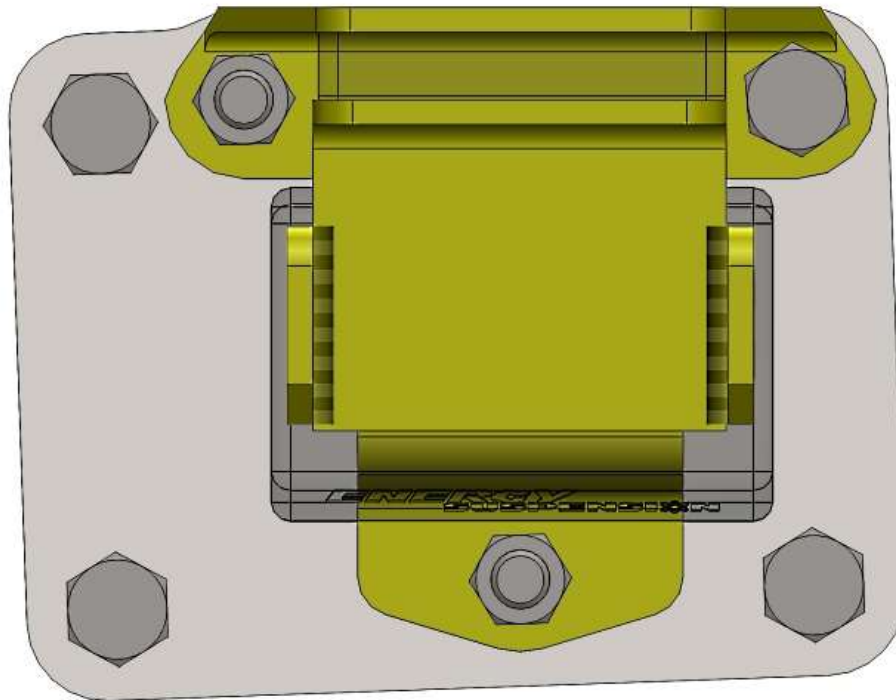


Right Side

Attach the 1/4" engine mount plate and polyurethane engine mount to the engine using the M10 x 25mm bolts provided.



Left Side



Right Side

Use the following diagrams to attach the engine mount side plates and spacers to the engine.



The engine bolt hole is offset one direction; make the side plates so the slotted hole is on the bottom
 Leave the long bolt slightly loose to allow movement and easier alignment when installing the engine.

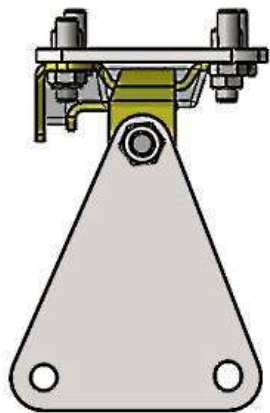
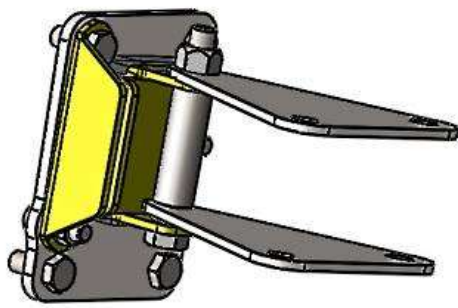
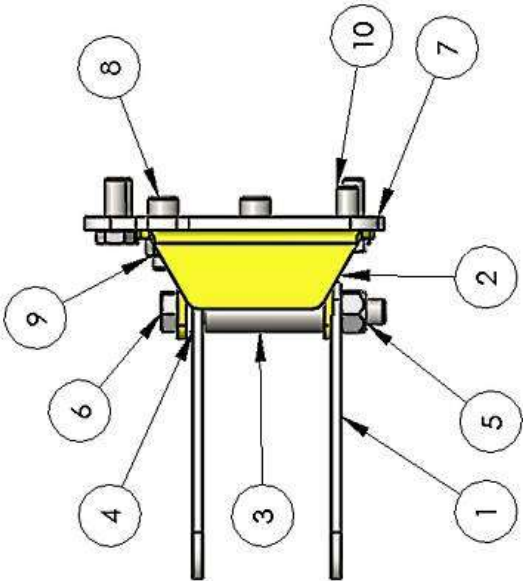
REV.:		REVISIONS:	
REV.	DESCRIPTION	DATE	APPROVED:
A	INITIAL RELEASE	5/10/11	

ITEM NO.	PART NUMBER	DESCRIPTION	LEFT SIDE/QUANTITY
1	33752	LS ENGINE MOUNT SIDE PLATE	2
2	3.1114		1
3	33753	ENGINE MOUNT SPACER	1
4	13210		1
5	93795A250		1
6	818.2,3,5M - Hex bolt M12 x 1.75 x 100 --30N		1
7	33754	ENGINE PLATE	1
8	HX-SHC3 0.375-1.6x1x1-N		2
9	HNUT 0.3750-1.6-D-N		2
10	818.2,3,1M - Hex cap screw, M10 x 1.5 x 25 --25N		4

HOT ROD	DRAWN	NAME	DATE	Factory Five Racing, Inc.
	JL	JL	3/21/11	
DIMENSIONS ARE IN INCHES TOLERANCES: TWO PLACE DECIMAL ±0.01 THREE PLACE DECIMAL ±0.005 FOUR PLACE DECIMAL ±0.001				TITLE: LEFT SIDE ASSEMBLY
UNLESS OTHERWISE SPECIFIED: DO NOT USE YELLOW ZINC ENGINE MOUNT BACKING PLATE				
MATERIAL: FINISH:				SIZE DWG. NO. REV. A 33755 A
USED ON: APPLICATION: LS ENGINE				SCALE: 1:3 WEIGHT: SHEET 1 OF 4
PRINTED: 1/19/2012				

PROPRIETARY AND CONFIDENTIAL
 THE INFORMATION CONTAINED IN THIS DRAWING IS THE SOLE PROPERTY OF FACTORY FIVE RACING, INC. ANY REPRODUCTION IN PART OR AS A WHOLE WITHOUT THE WRITTEN PERMISSION OF FACTORY FIVE RACING, INC. IS PROHIBITED.

REV.	DESCRIPTION	DATE	APPROVED
A	INITIAL RELEASE	5/10/11	



ITEM NO.	PART NUMBER	DESCRIPTION	RIGHT SIDE/QTY.
1	33752	LS ENGINE MOUNT SIDE PLATE	2
2	3.1114		1
3	33753	ENGINE MOUNT SPACER	1
4	13210		1
5	93795A250		1
6	818.2.3.5M - Hex bolt M12 x 1.75 x 100 --30N		1
7	33754	ENGINE PLATE	1
8	HX-SHCS 0.375-16x1x1-N		2
9	HNUT 0.3750-16-D-N		2
10	818.2.3.1M - Hex cap screw, M10 x 1.5 x 25 --25N		4

UNLESS OTHERWISE SPECIFIED:
 DIMENSIONS ARE IN INCHES
 TOLERANCES:
 TWO PLACE DECIMAL ±0.01
 THREE PLACE DECIMAL ±0.005
 FOUR PLACE DECIMAL ±0.001

DRAWN: [Signature] DATE: 3/21/11
 COMMENTS:
 DO NOT USE YELLOW ZINC
 ENGINE MOUNT BACKING PLATE

HOT ROD
 USED ON
 APPLICATION
 LS ENGINE

PRINTED: 1/19/2012

SCALE: 1:3 WEIGHT: SHEET 3 OF 4

REV: A DWG. NO. 33755

REV: A

Factory Five Racing, Inc.



PROPRIETARY AND CONFIDENTIAL
 THE INFORMATION CONTAINED IN THIS DRAWING IS THE SOLE PROPERTY OF FACTORY FIVE RACING, INC. ANY REPRODUCTION IN PART OR AS A WHOLE WITHOUT THE WRITTEN PERMISSION OF FACTORY FIVE RACING, INC. IS PROHIBITED.



Install the engine and transmission.
Attach the engine side plates to the frame using the bolts provided.



Attach the headers to the engine.



Attach the connector pipes to the kit exhaust system.

