



Factory Five Racing, Inc.

Part Number: 14792	Revision: <u>D</u>	Effective Date: <u>07/12/2013</u>	By: <u>J.Ingerslev</u>
Document Type (indicate):			
<input type="radio"/> Bill of Material <input checked="" type="radio"/> Assembly Instructions	<input type="radio"/> Drawing (may be attached) <input type="radio"/> Operating Procedure	<input type="radio"/> Specification <input type="radio"/> Other	

Wilwood Pedalbox Instructions

I. Parts included in kit

14749	PEDAL COMPONENTS		
14724	CLUTCH QUADRANT ASSEMBLY	EA	1.00
	INCLUDED WITH ABOVE PART# 13087 CLUTCH QUADRANT (1) 13088 THREADED FIREWALL ADJUSTER (1) 14729 #8-32 x 0.75" SOCKET HEAD SCREW (4) 25379 #8-32 NYLON LOCKNUT (4) 14720 QUADRANT SPACER (1) 14721 3/8"-16 x 3.5" SOCKET HEAD CAP SCREW (1) 11040 3/8"-16x 1.25" BOLT (1) 13964 3/8"-16 NYLON LOCK NUT (2) 14725 3/8"-16 JAM NUT (1) 14723 CLUTCH PEDAL PIVOT SLEEVE (1)		
14989	CLUTCH CABLE	EA	1.00
14441	BRAKE LIGHT SWITCH	EA	1.00
11180	0.25" FEMALE TERMINAL CONNECTOR	EA	2.00
14772	MASTER CYLINDER	EA	2.00
15206	PEDAL BOX WITH FORGED PEDALS	EA	1.00
	INCLUDED WITH ABOVE PART# 6 NYLON LOCKNUTS 3 JAM NUTS 6 WASHERS		
14888	MASTER CYLINDER RESERVOIR FITTING	EA	2.00
15236	5/16"-18 x 1" PRESS IN STUD	EA	1.00
14784	5/16"-18 THIN NYLON LOCK NUT	EA	1.00
10520	3/8"-16 x 1" BOLT	EA	1.00
12775	#10-32 x 5/8" BUTTON HEAD SOCKET SCREW	EA	1.00
12768	#10-32 STAINLESS NYLON LOCK NUT	EA	1.00
15127	3/8" NYLON "T"	EA	1.00
12336	1/4"-20 x 1.5" SOCKET HEAD CAP SCREW	EA	2.00
10802	1/4" NYLON LOCK NUT	EA	2.00
11024	5/16"-18 x 1" BOLT	EA	3.00
13963	5/16"-18 NYLON LOCK NUT	EA	3.00
14870	SPACER, .50", ALUMINUM	EA	2.00
15142	ALUMINUM PANEL, DRIVER FOOTBOX FRONT WALL - WILWOOD PEDALS	EA	1.00
14737	ALUMINUM PANEL, WILWOOD CLUTCH BLOCKOFF	EA	1.00
14734	PEDALBOX MOUNT, STEEL	EA	1.00
14735	PEDALBOX REAR MOUNT, STEEL	EA	1.00
14783	CLUTCH QUADRANT STOP, STEEL	EA	1.00
14788	BRAKE LIGHT SWITCH MOUNT, STEEL	EA	1.00
33688	FLANGE BUTTON HEAD SCREW, 1/4"-20 X 1/2"	EA	4.00
10995	#10 X 1" SCREW	EA	4.00

(CONTINUED ON NEXT PAGE)

33892	BRAKE RESERVOIR COMPONENTS		
33889	BRAKE RESERVOIR	EA	1.00
33890	1/8" NPT THREAD TO 3/8" BARB	EA	1.00
33891	1/8" NPT THREAD TO 3/8" ELBOW BARB	EA	1.00
11138	HOSE CLAMP, 5/16" FUEL LINE	EA	2.00
33914	3/8" ID HOSE	FT	3.00

II. Installation Instructions

Note: This pedal box is set-up to use either a hydraulic clutch or a cable clutch. The parts and instructions required for a cable clutch installation are included in this kit.

✂ 1/2", 9/16" sockets, 3/8", 11/32", 1/2", 9/16" wrenches, Drill, 3/16", 1/4", 1/2" Drill bit, 1/8", 9/32", 3/16", 5/16" Hex Keys, Hammer, Vise or 2 pieces of 2 x 4, Razor knife or file or grinder, snap ring pliers.

🚗 Pedal Components, pedal box hardware.

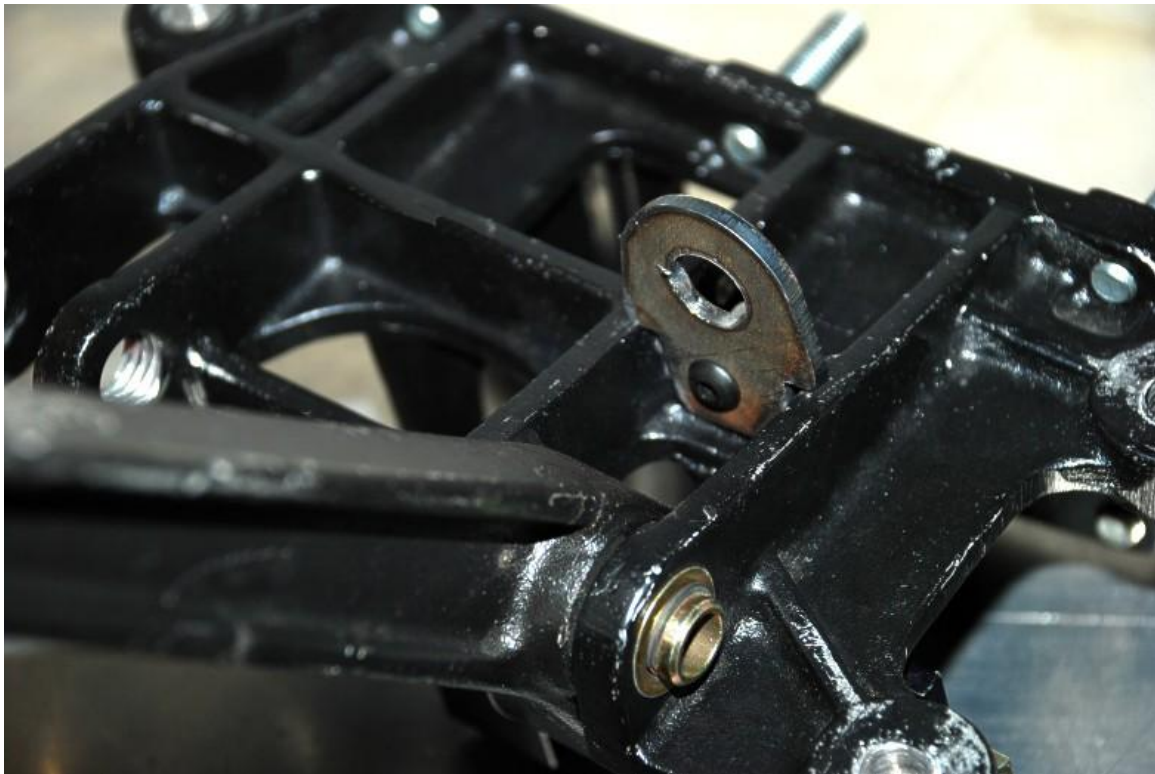
👤 This pedal box is set-up to use either a hydraulic clutch or a cable clutch. The parts and instructions required for a cable clutch installation are included in this kit.



Unpack the pedal box assembly. Now is a good time to paint all of the bare steel brackets.



Use snap ring pliers to remove one of the retaining clips from the brake pedal pivot sleeve and pull the sleeve to remove the pedal.



Place the brake switch mount between the brake pedal mount tabs on the side closest to the brake pedal pivot holes and drill a 3/16" hole through the brake switch mount hole and the pedal box.



Attach the brake switch mount to the pedal box using the black #10 screw and locknut.

Clutch Cable Quadrant



Using snap ring pliers, remove one of the retaining clips from the clutch pedal pivot sleeve.



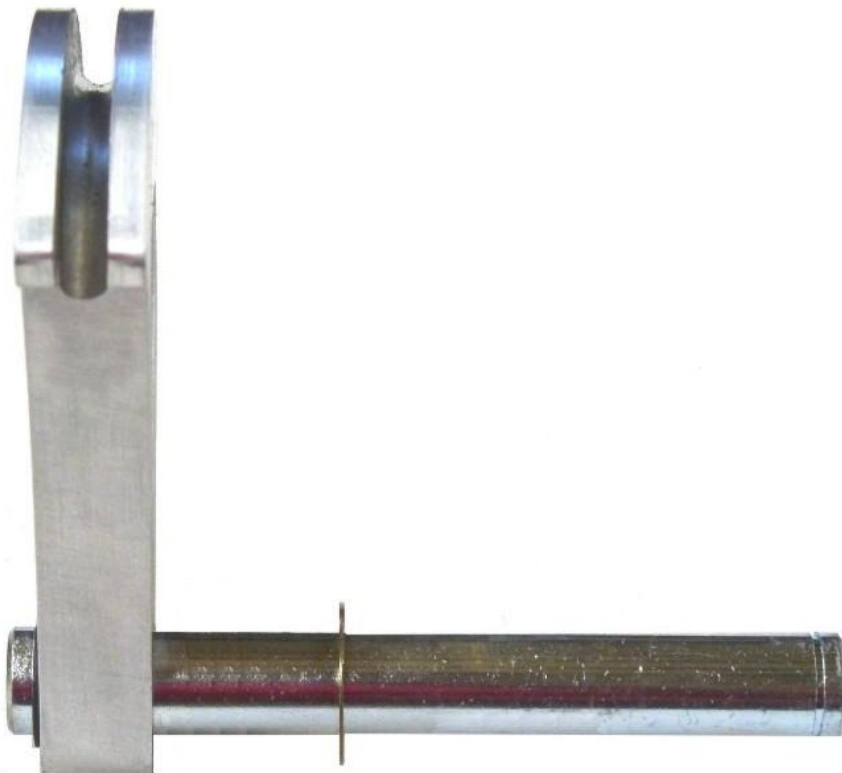
Push the pivot sleeve out and remove the pedal and remove the second snap ring from the clutch pedal pivot sleeve.



Using snap ring pliers, attach one of the snap rings to the new longer pivot sleeve provided.



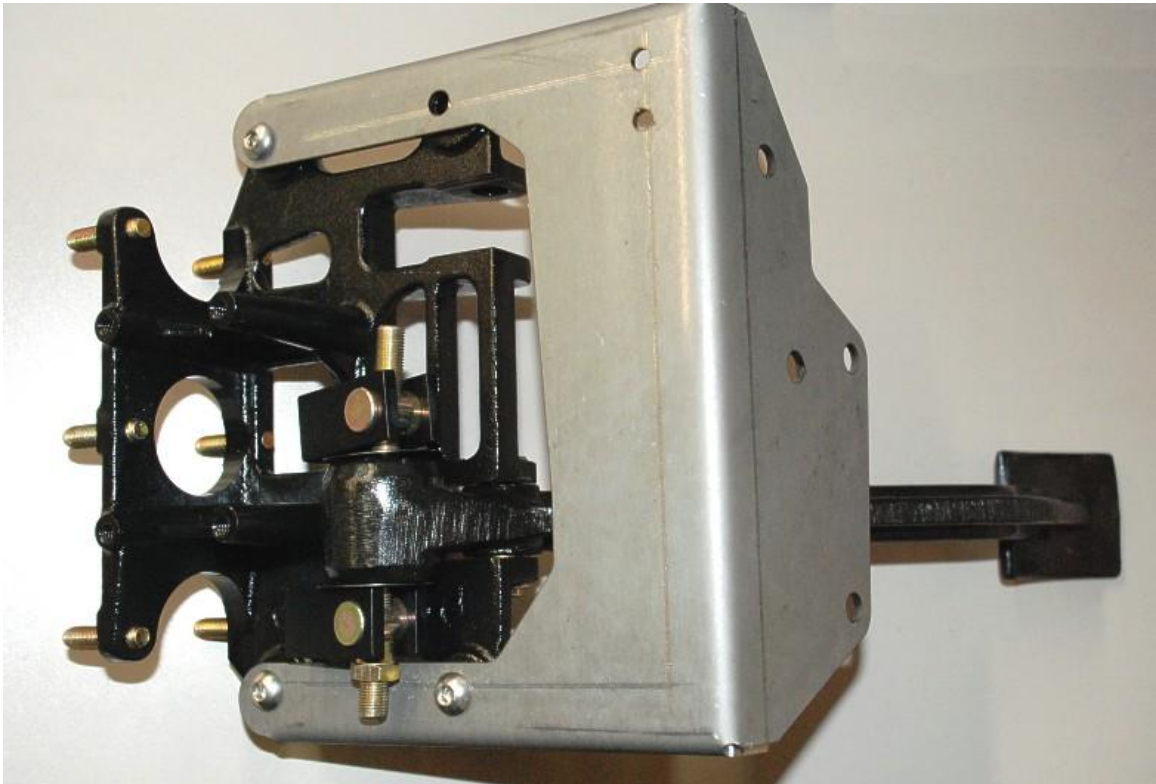
Push the pivot sleeve through the clutch quadrant from the left side. If necessary, chase the quadrant hole with a 1/2" drill bit so that the quadrant can slide on the pivot sleeve.



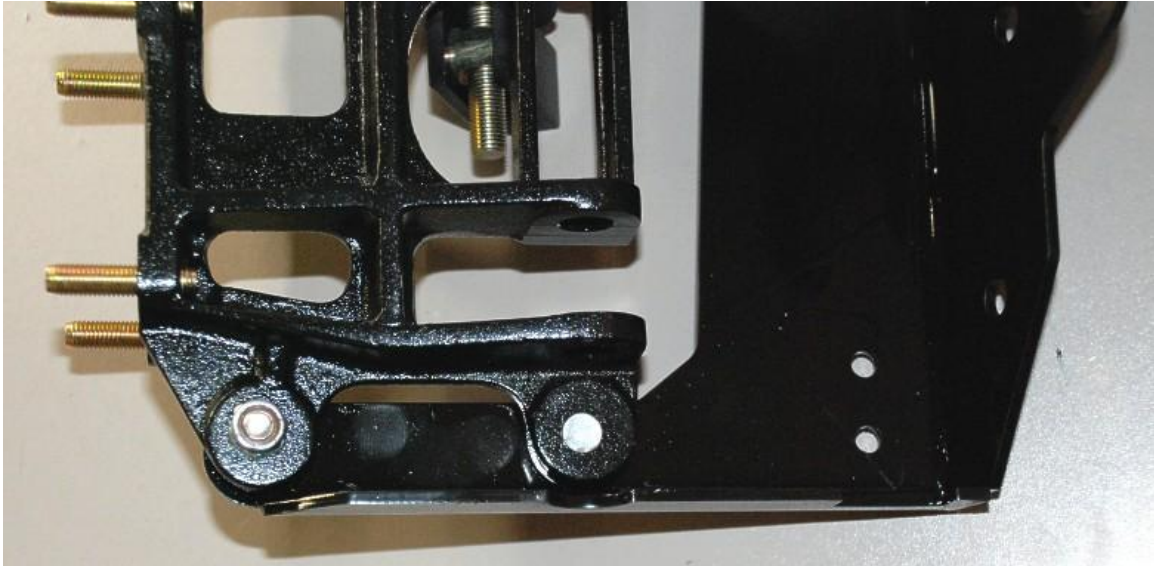
Put one of the Wilwood pedal washers on the pivot sleeve next to the quadrant.



Remove the snap ring holding the master cylinder mount to the clutch pedal, push the pivot sleeve out and remove the master cylinder mount.



Attach the Wilwood pedals to the underside of the mounting bracket using three button head screws and locknuts and the stud.



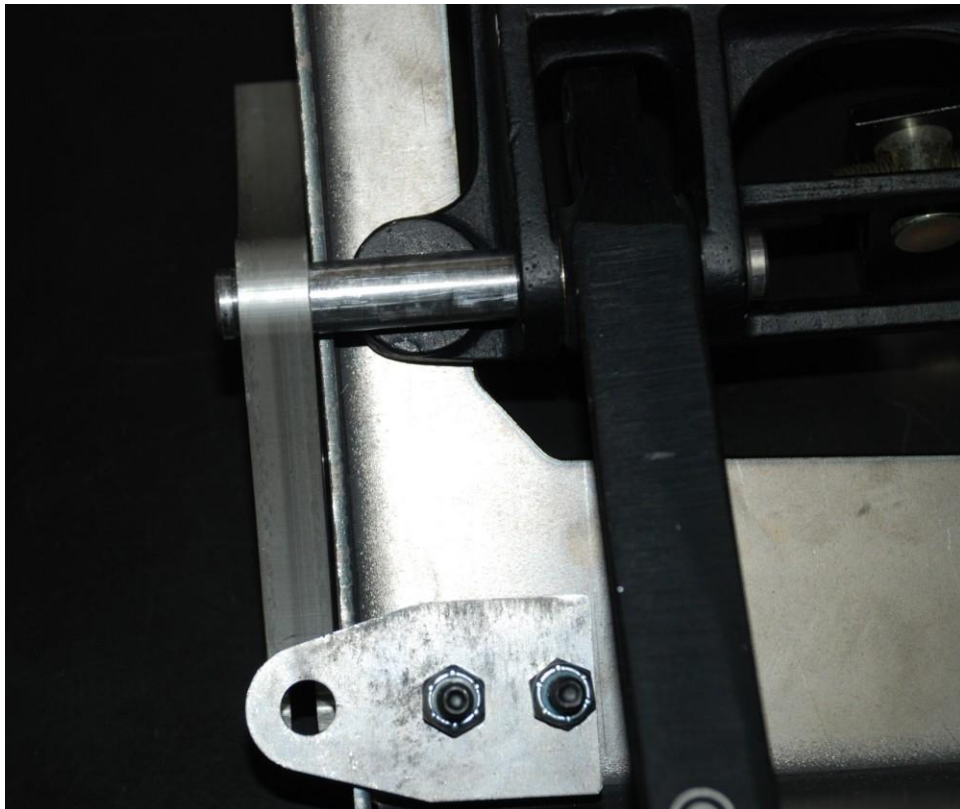
The stud should get mounted on the left side next to the clutch pedal pivot sleeve boss. A tap in with a hammer and punch will get the stud to stick while tightening.



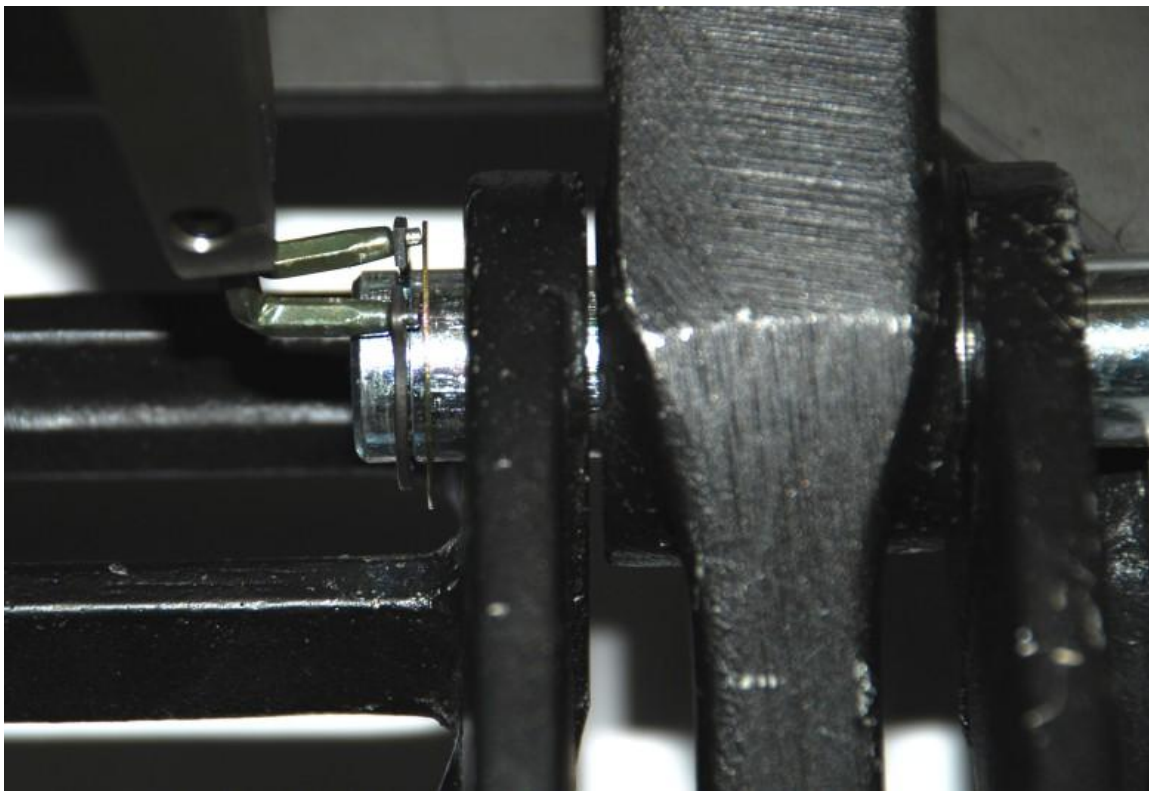
Attach the Clutch pedal stop mount to the bottom of the pedal box using two 1/4" socket head screws, spacers and locknuts.



Put the actuator in a vise and snug up the bolts with a $\frac{5}{16}$ " hex key. Do not overtighten and strip the threads.

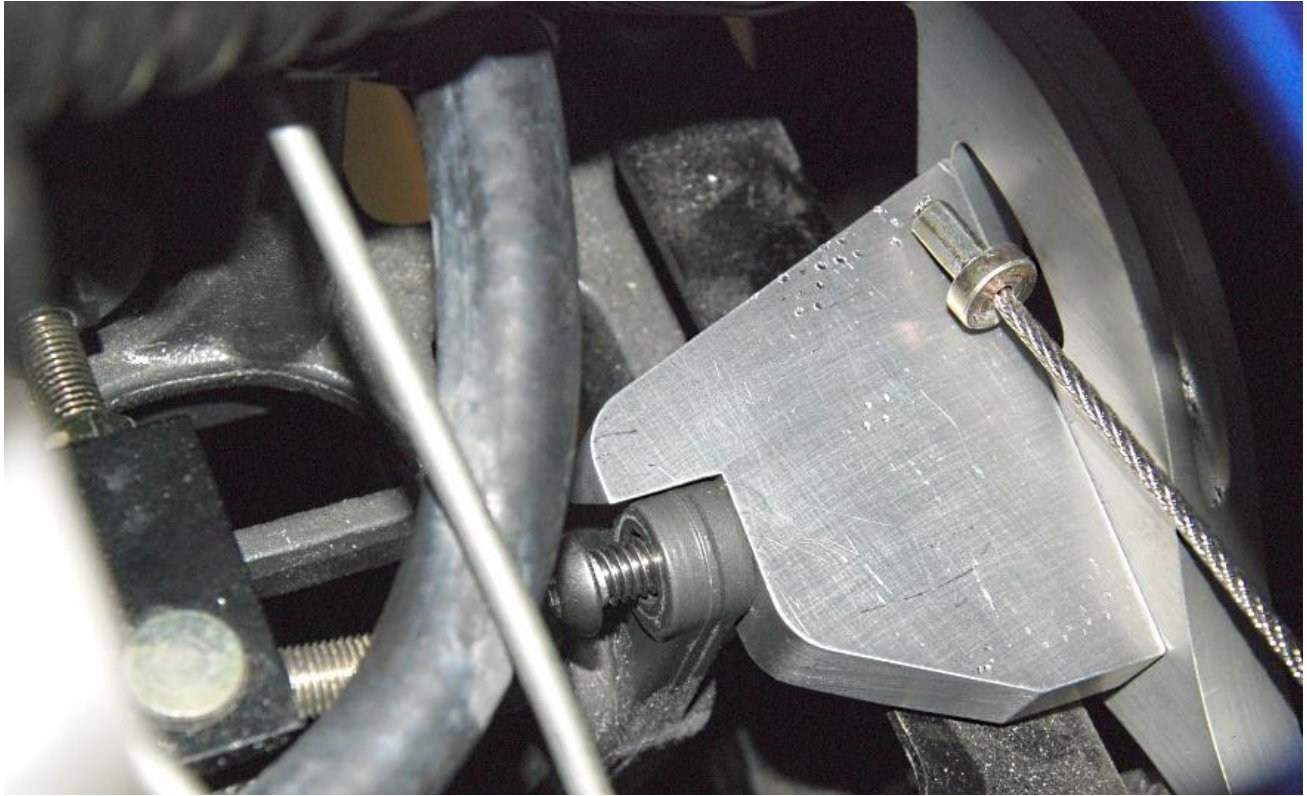


Slide the Quadrant and new pivot sleeve assembly through the hole in the side of the Wilwood pedal bracket and remount the clutch pedal.



Put the remaining thin washer and snap ring on the pivot sleeve.

Put locktite on the $\frac{5}{16}$ " bolt threads.



Insert the $\frac{5}{16}$ " bolt through the clutch pedal and thread into the actuator.

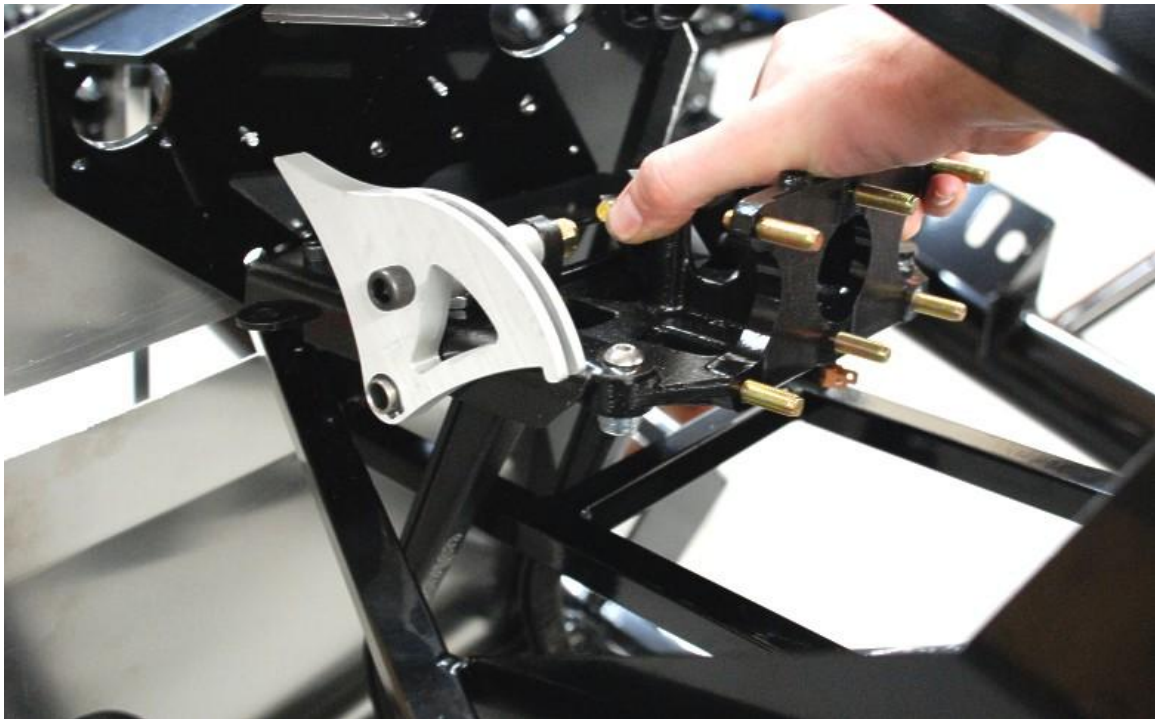
Snug up the bolt using a $\frac{3}{16}$ " hex key.



This $\frac{5}{16}$ " bolt is only used to hold the pedal in position when the pedal is not being pushed depending on the pedal height. It does not put any pressure on the pedal.



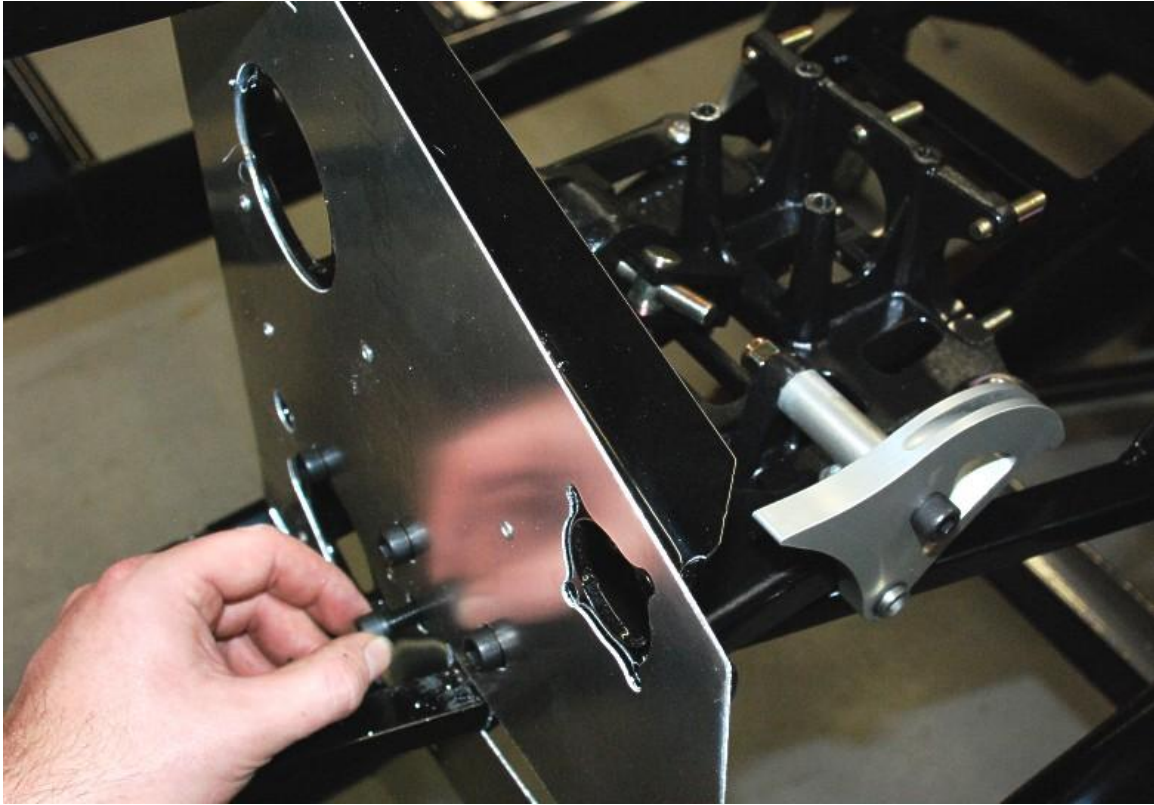
Check that the clutch moves freely and does not contact the stud. If needed file the top of the stud down for clearance.



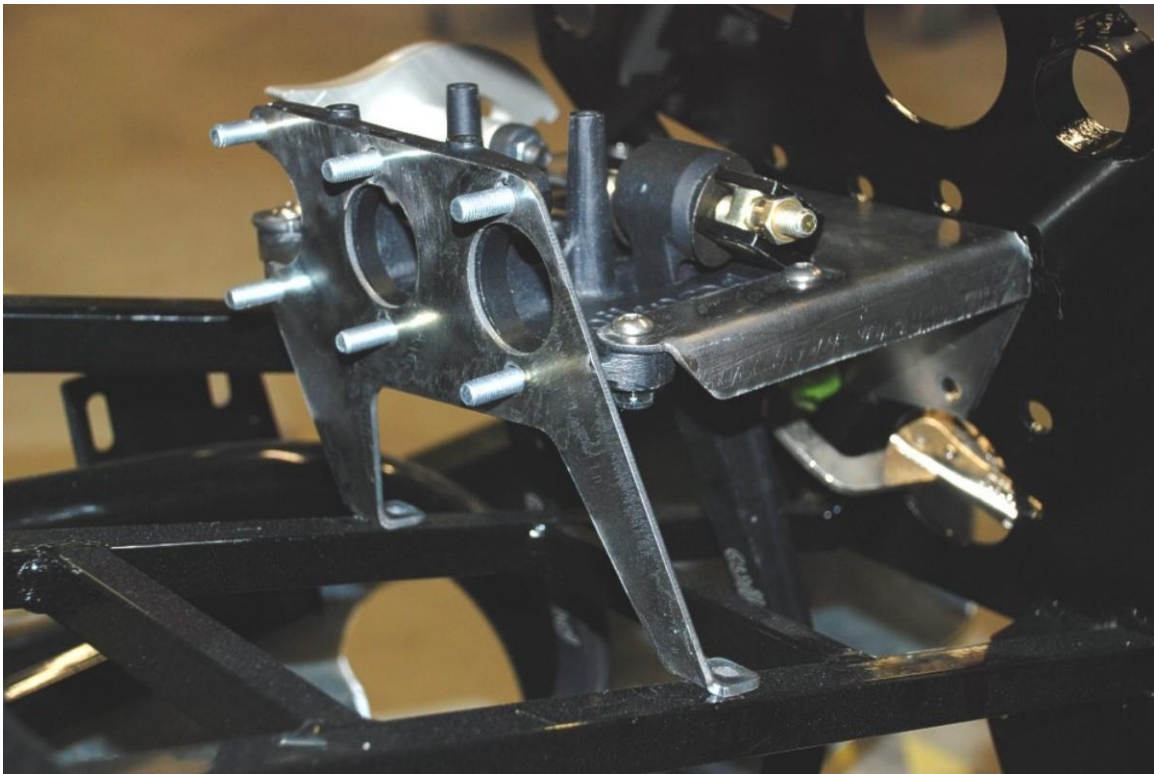
Place the pedal box assembly in the drivers footbox. Make sure that the brake pedal goes in front of the $\frac{3}{4}$ " cross tube on the frame.



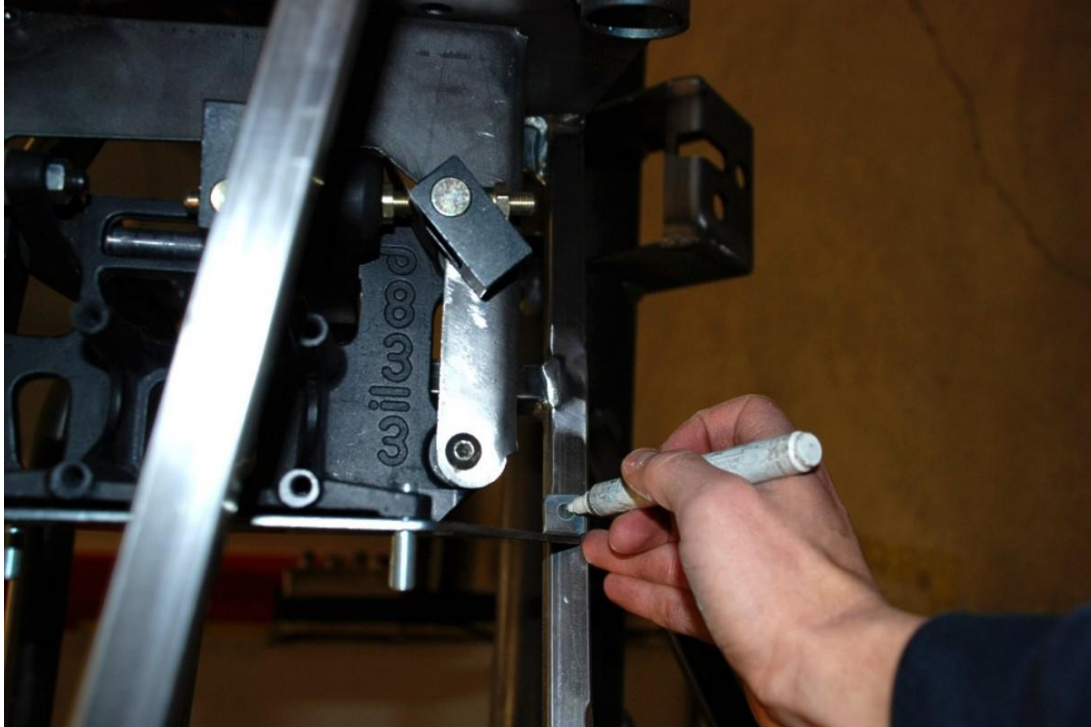
Unpack the pedal box hardware from the secondary chassis components box.



Insert three $\frac{3}{8}$ " x 1" socket head screws from the pedal box hardware assembly and the one included in this pedal assembly through the front of the footbox and through the pedal box mount.



Push the rear pedal box mount onto the master cylinder mount studs and use a few of the jam nuts from the Wilwood pedal assembly to temporarily hold the rear mount in place.



Tighten two of the front $\frac{3}{8}$ " screws then use a marker to mark the locations of the rear mount holes on the $\frac{3}{4}$ " tubes.



Loosen the bolts and remove the pedal box assembly from the footbox then use a $\frac{1}{4}$ " drill bit and drill to drill through the $\frac{3}{4}$ " tubes at the locations marked for the rear mount.

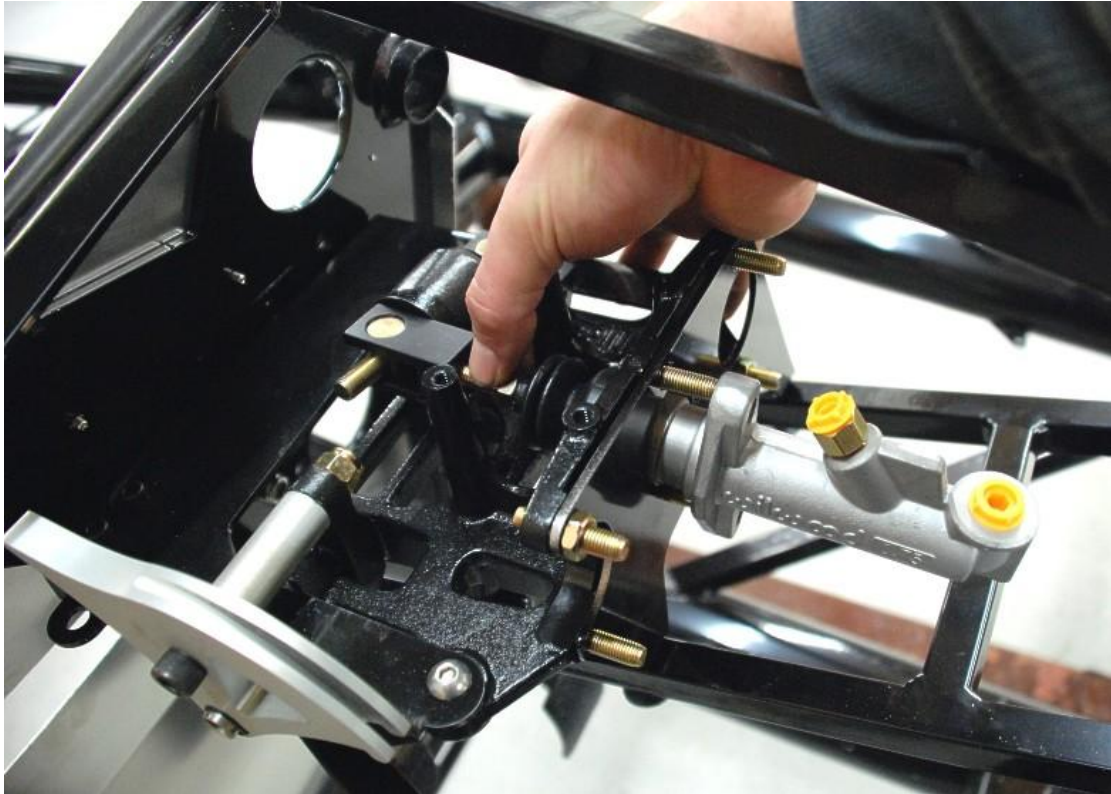


Reinstall the pedal box assembly in the driver's footbox; use the ¼"x 1.50" screws from the pedal box fastener assembly with a fender washer next to the head. Leave all the hardware hand tight.

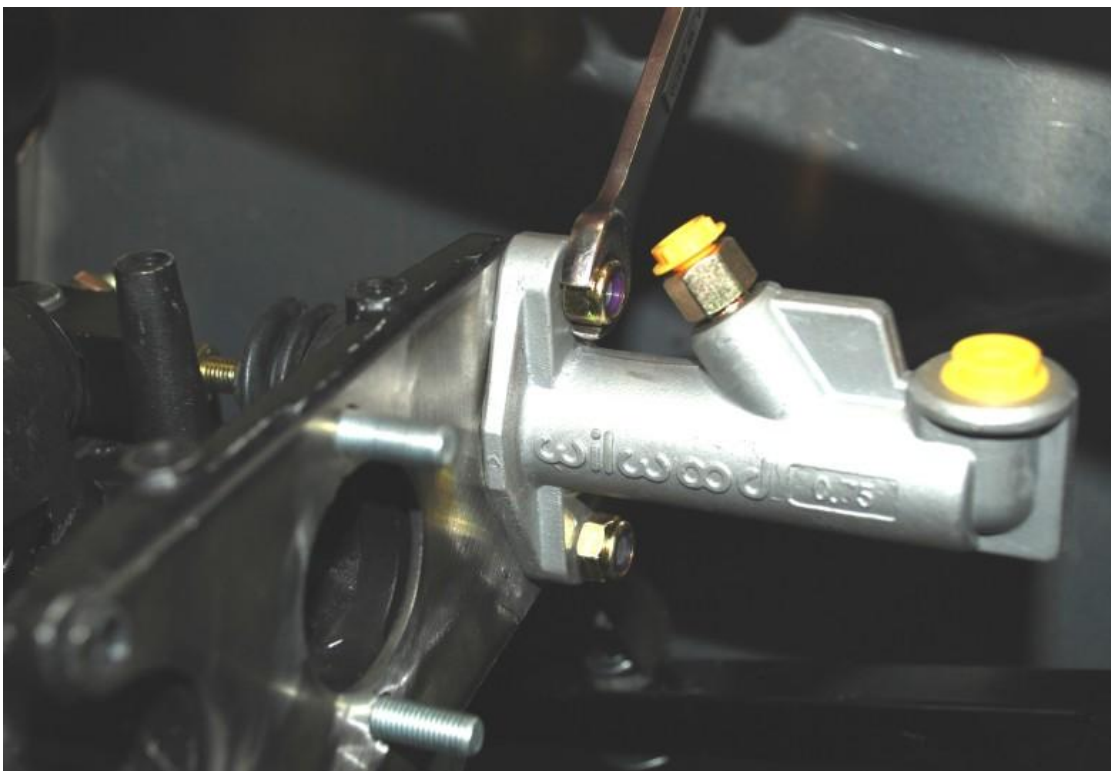
Master Cylinders



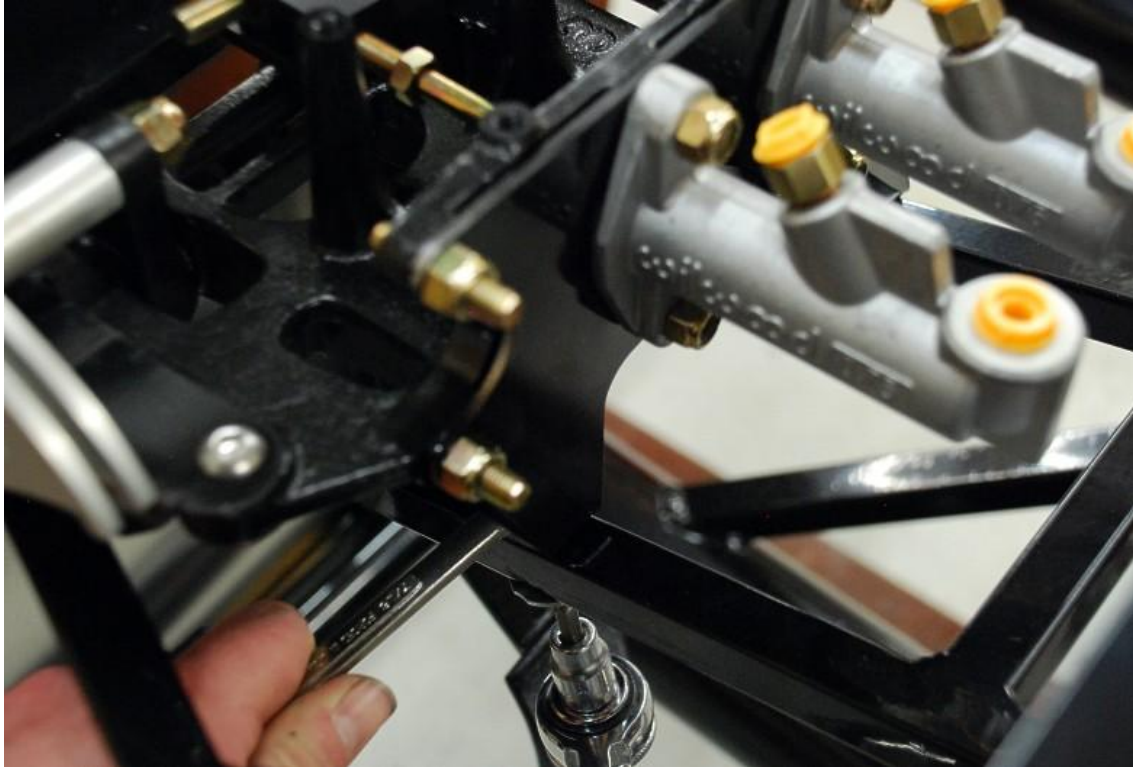
Place a jam nut from the Wilwood pedals onto each of the master cylinder threaded shafts.



Put one of the master cylinders onto one of the brake master cylinder mounts and turn the threaded shaft into the threaded mount on the brake pedal. As a starting point, thread the shaft in until you can see it is flush on the other side of the mount.



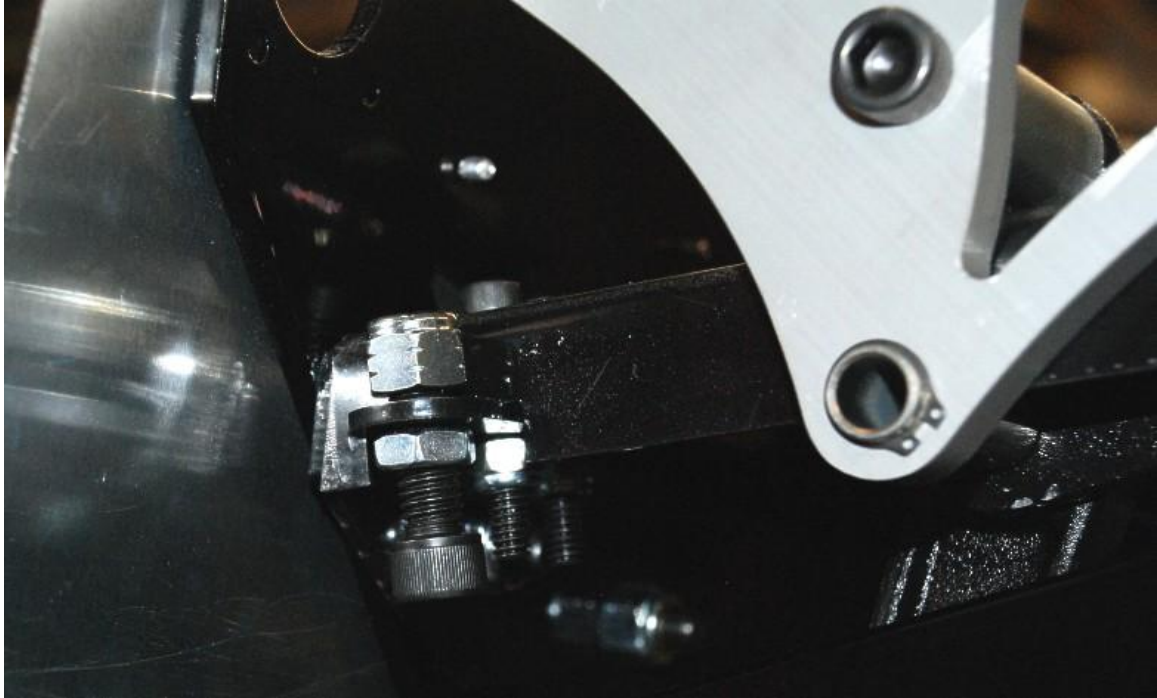
Attach and tighten the locknuts holding the master cylinder to the pedal box then repeat for the other master cylinder.



Tighten all the remaining hardware mounting the pedal box to the chassis.

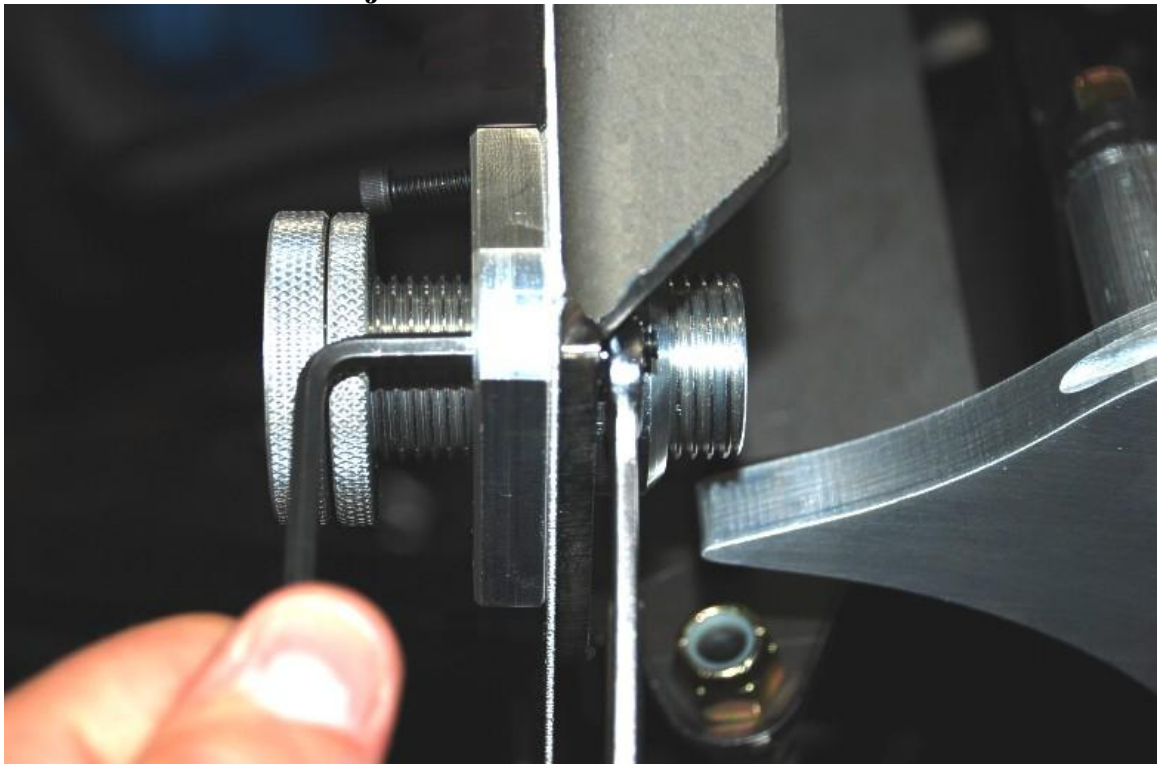


Thread the jam nut onto the $\frac{3}{8}$ " x 1.25" screw provided in the quadrant box.

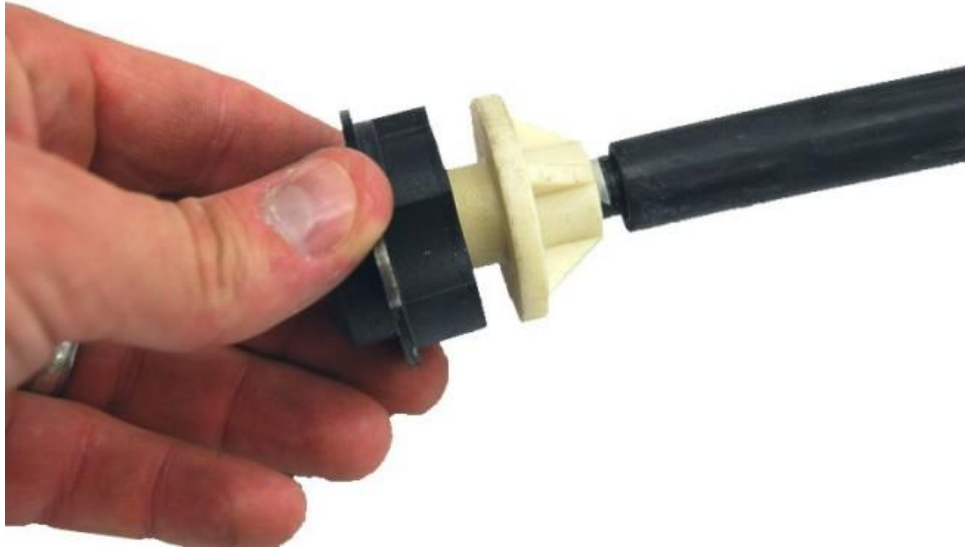


From the underside, push the screw through the quadrant pedal stop mount plate and hand tighten the locknut on the screw.

Clutch Cable and Firewall Adjuster



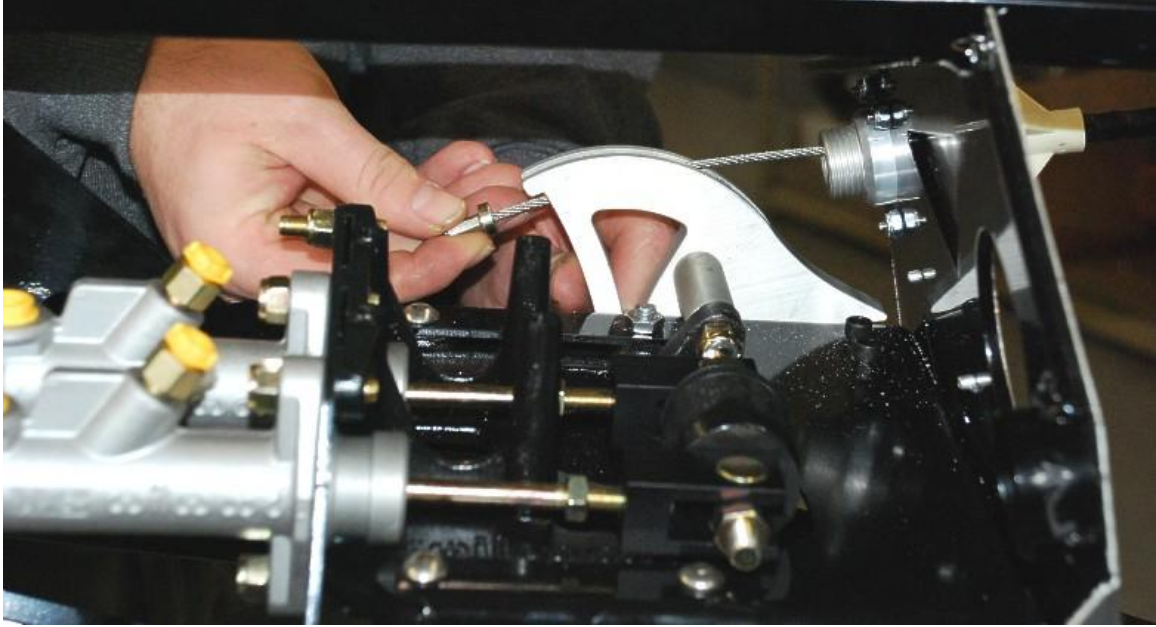
Push the firewall adjuster into the front of the footbox and attach to the front of the pedal box using the screws provided and a 9/64" hex key and an 11/32" wrench.



Pull the rubber mount off the end of the clutch cable.



Use a razor knife, file or grinder to remove the plastic barbs from the plastic shaft.



Slide the clutch cable boss through the adjuster and loop the cable over the quadrant.