



Factory Five Racing, Inc.

## 818 Kit

### Assembly manual revision 1F update

Seat mounting ..... Error! Bookmark not defined.

#### Seat mounting

🚗 Seat mount brackets,  $\frac{3}{8}$ " x 2" bolts and locknuts, seats

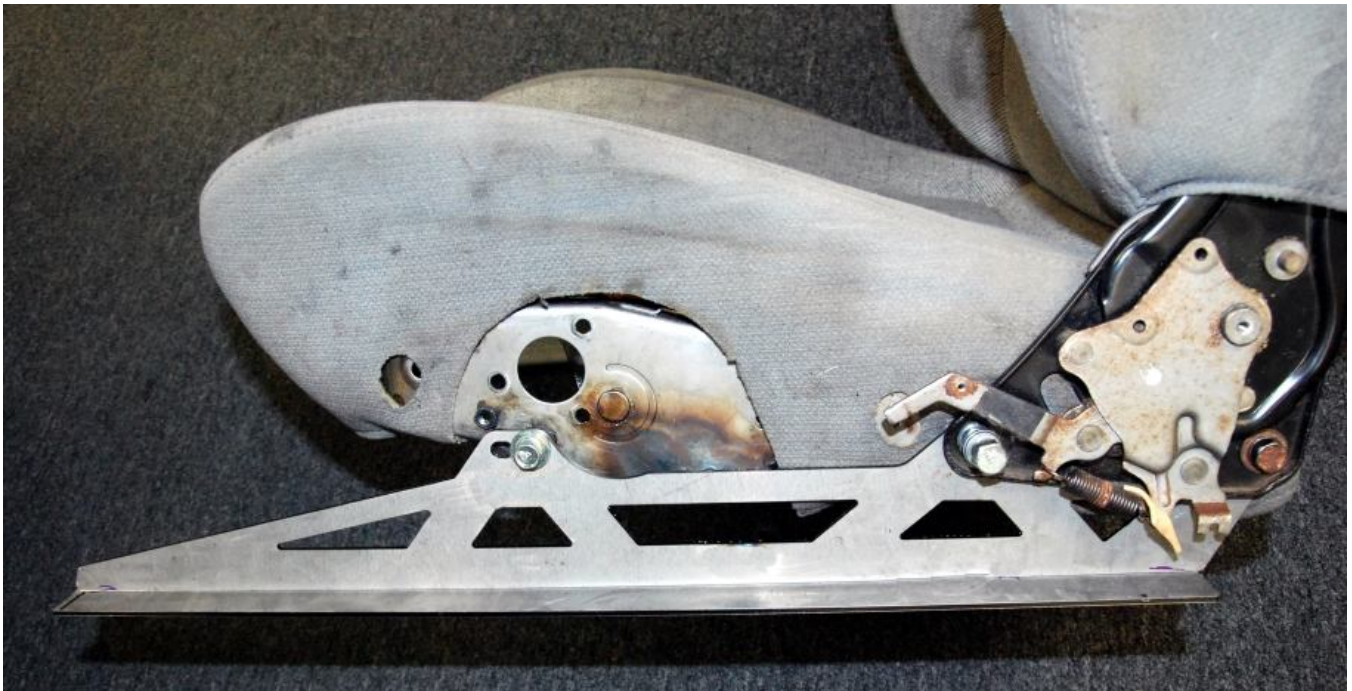
🔧  $\frac{9}{16}$ " wrench,  $\frac{9}{16}$ " socket, ratchet, drill,  $\frac{3}{8}$ " drill bit

#### OEM seats

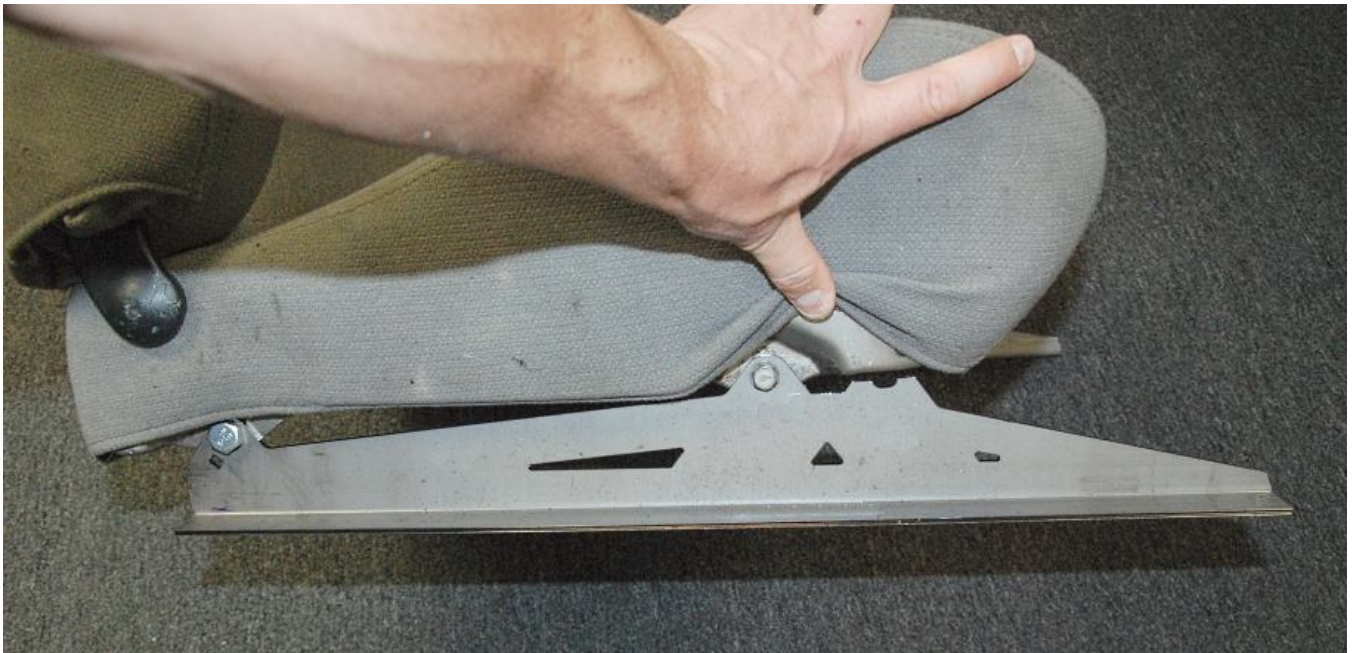
##### 2002-2005 Seats



On the left seat left side, the rear bolt holding the seat hinge must be temporarily removed, because it also holds the seat bracket on.

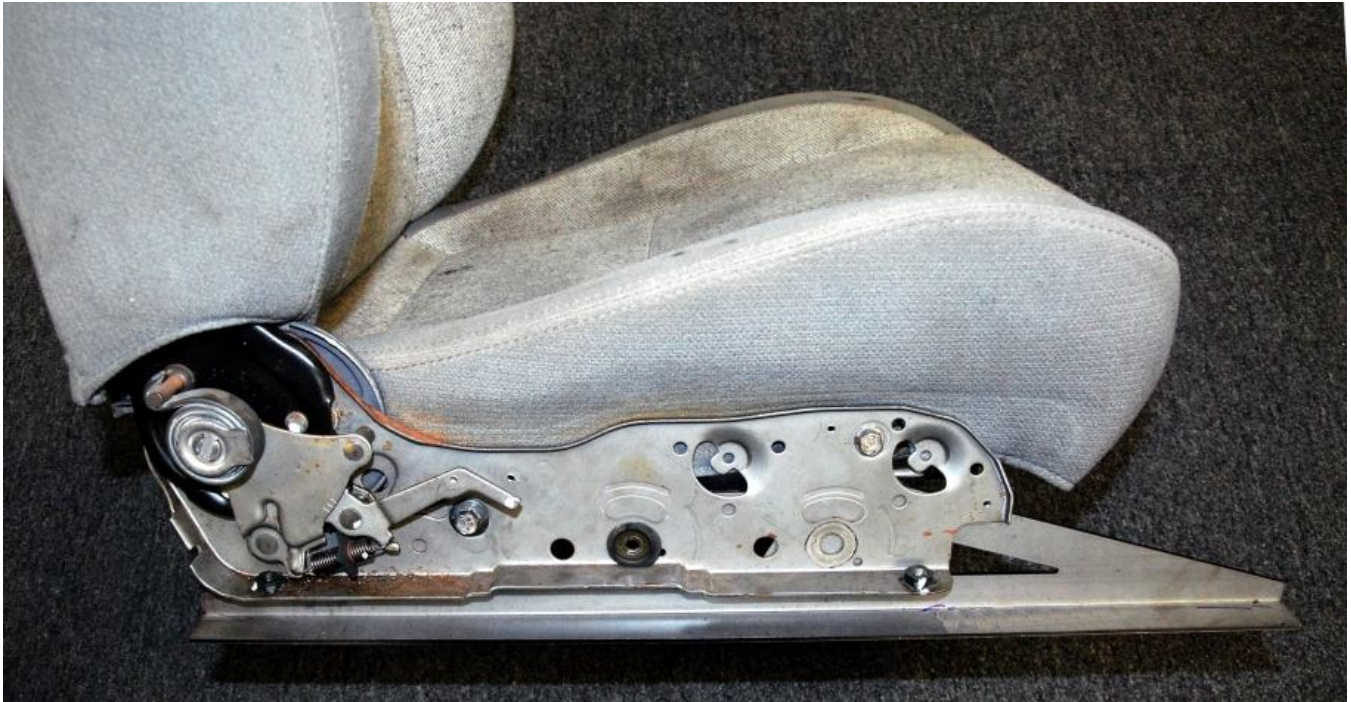


Bolt the seat bracket on using OEM bolts in the top rear hole and the front slot.



On the right side of the early model left seat, the forward hole must be cut in addition to the two long tabs. This cut can be seen above. The bracket bolts to the seat using OEM hardware in the rear hole and slot of the bracket.





On the right seat, the right side bracket needs to be attached behind the stock seat bracket.

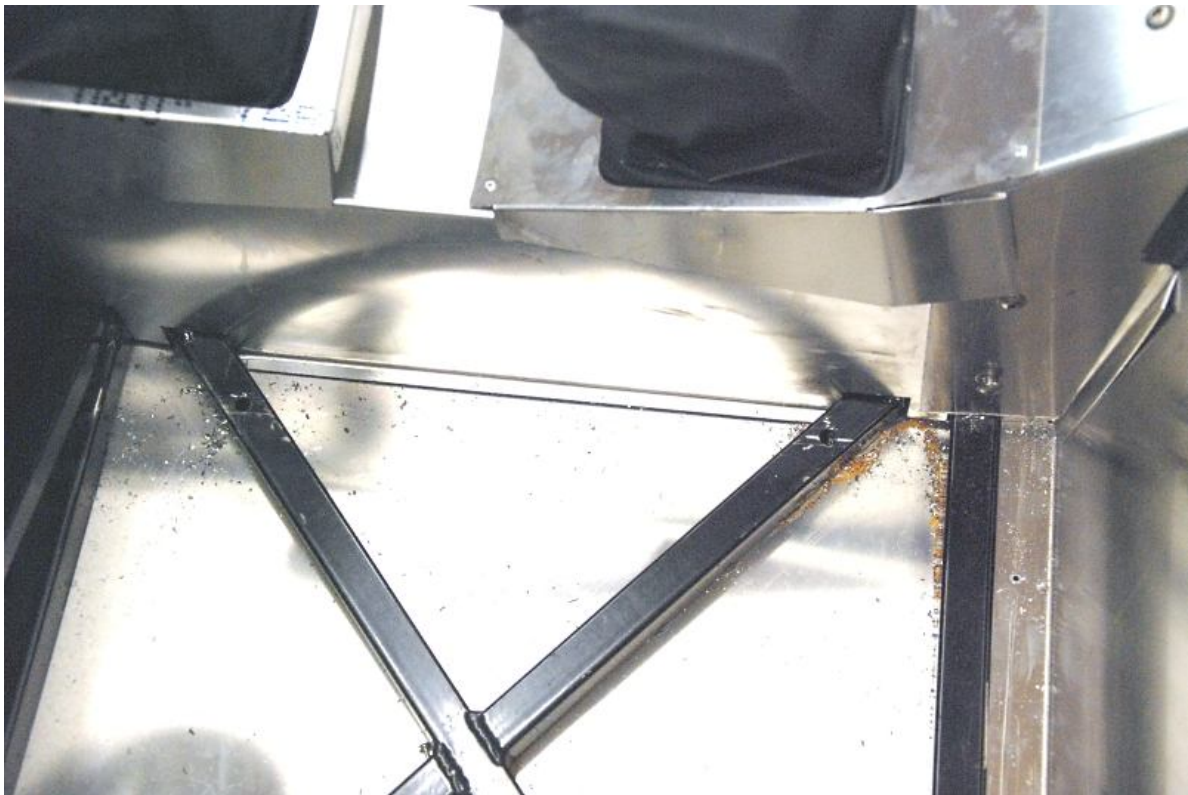


The right seat left side bracket bolts to the seat with two bolts in the front.





The rear also acts as a hinge so a bolt must be put through the hinge of the seat back into the bracket.



Mount the seat brackets to the chassis by marking where the seat fits on the “x” shape of the tubes. Then drill a hole in each tube to bolt the seat brackets through.



Place the bolt up through the bottom of the tube and seat bracket.



Bolt the seat to the frame.



## 2006-07 Seats

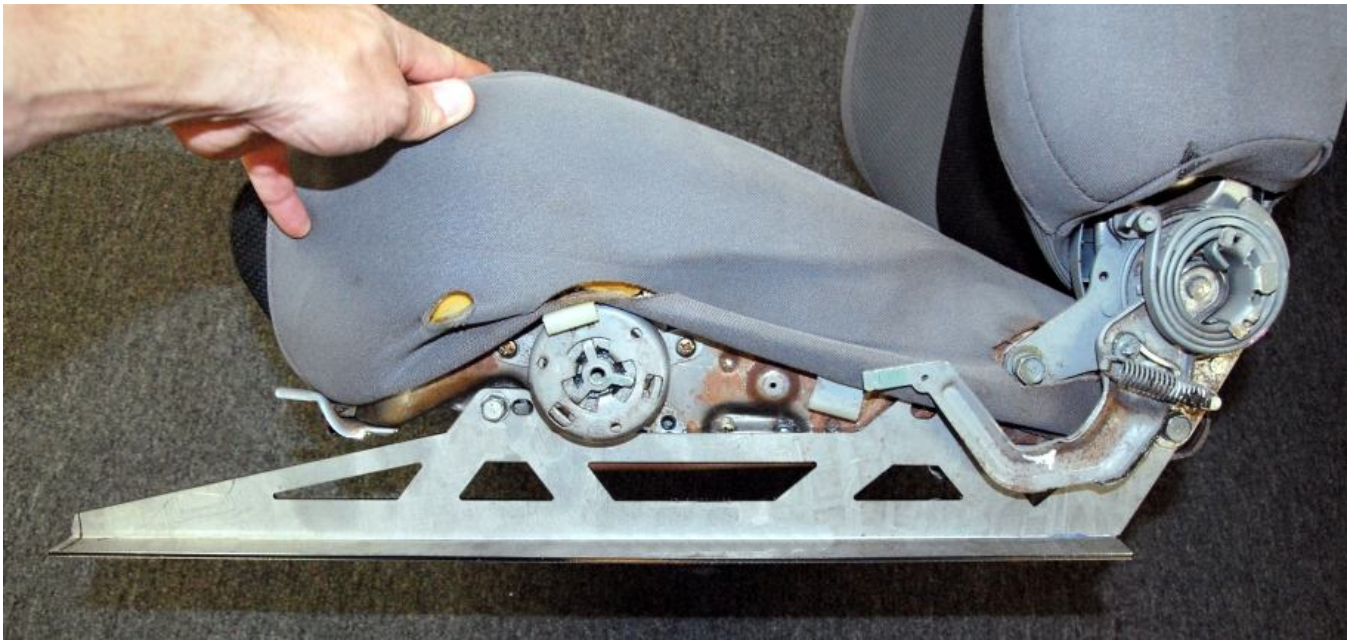


On the right side of the left seat, after the two tabs are cut, mount the bracket using the furthest forward and rear holes using factory OEM bolts.

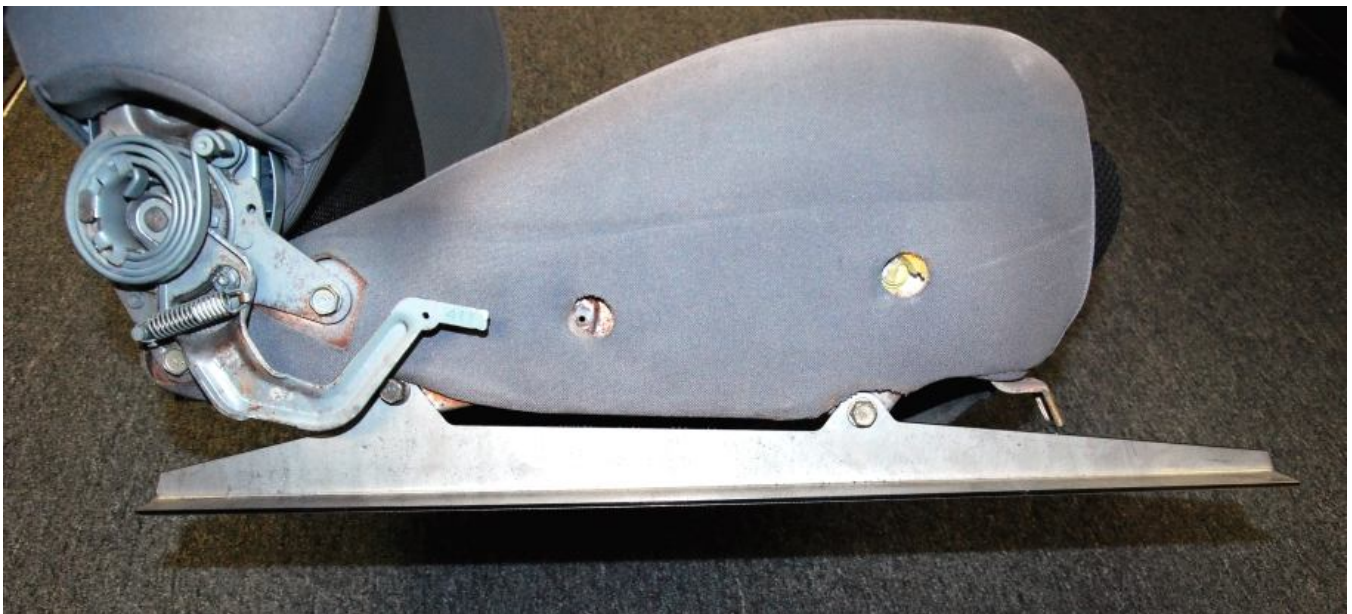


Use the provided spacer between the front hole of the bracket and seat in order for the bracket to sit flat.

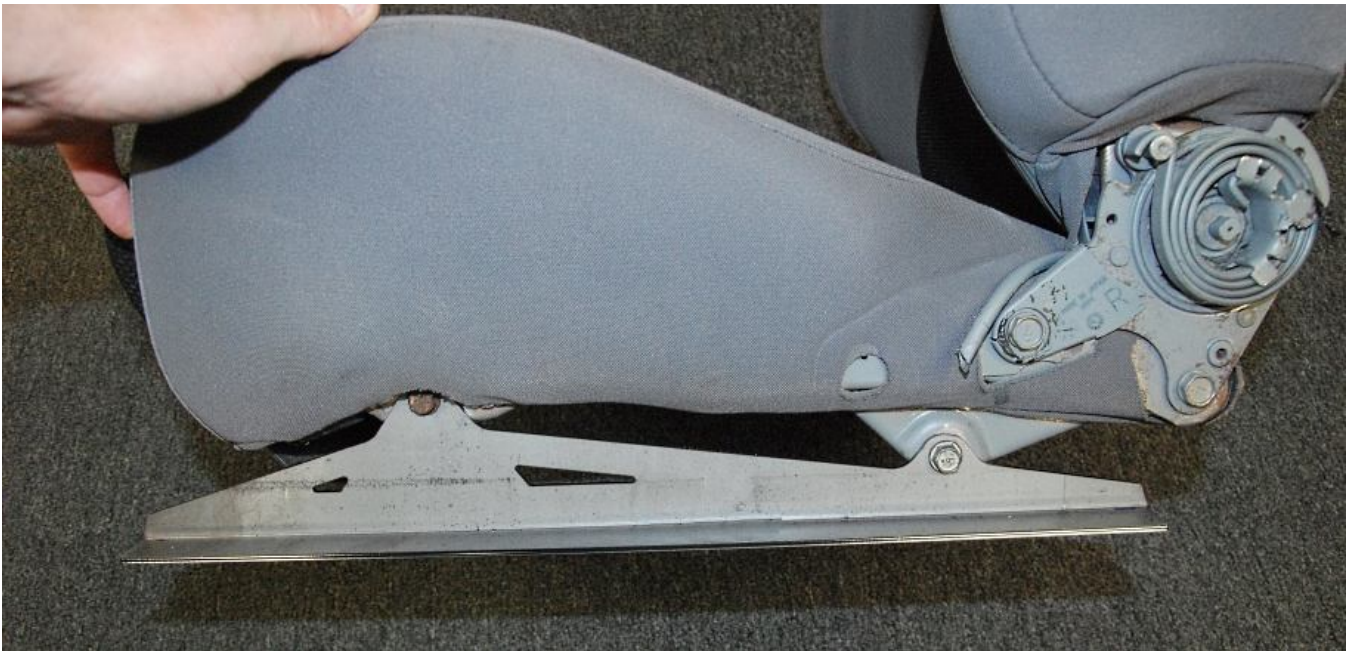




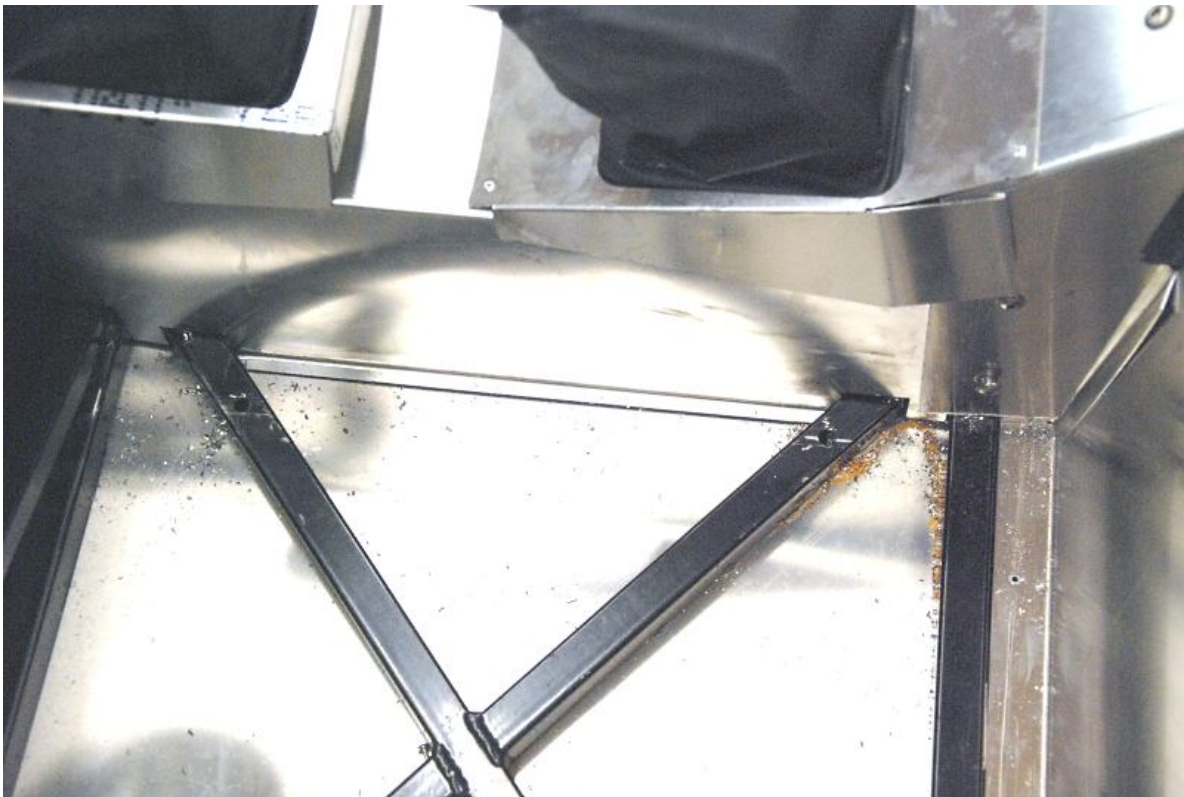
The left seat left side bracket is bolted on using OEM hardware with the lower rear hole and front slot.



Repeat this for the right seat.



The right brackets also need two large tabs cut off, then the two holes bolt up using stock hardware.



Mount the seat brackets to the chassis by marking where the seat fits on the “x” shape of the tubes. Then drill a hole in each tube to bolt the seat brackets through.





Place the bolt up through the bottom of the tube and seat bracket.



Bolt the seat to the frame.