



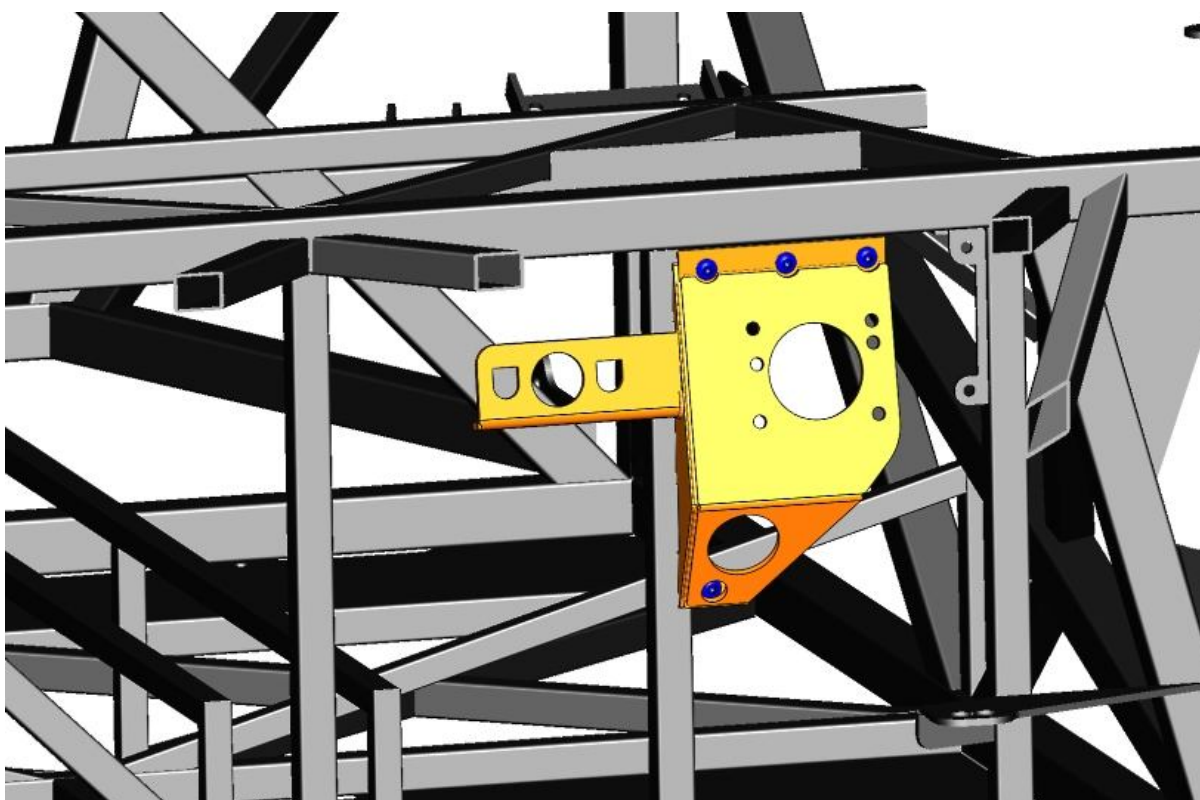
Factory Five Racing, Inc.

818 Kit

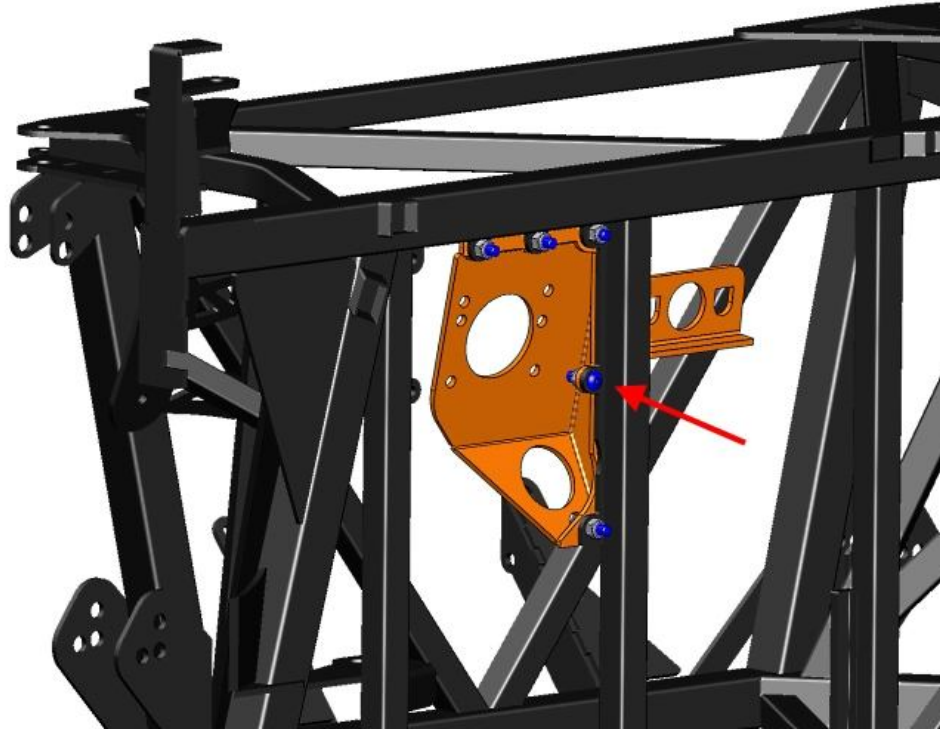
Assembly manual revision 1i update

Pedal box.....	1
Cable Accelerator Pedal (2002-2005).....	2
OEM seats	7
Windshield.....	13
Center console	19

Pedal box



Attach the pedal box front plate to the front of the frame brackets as shown.

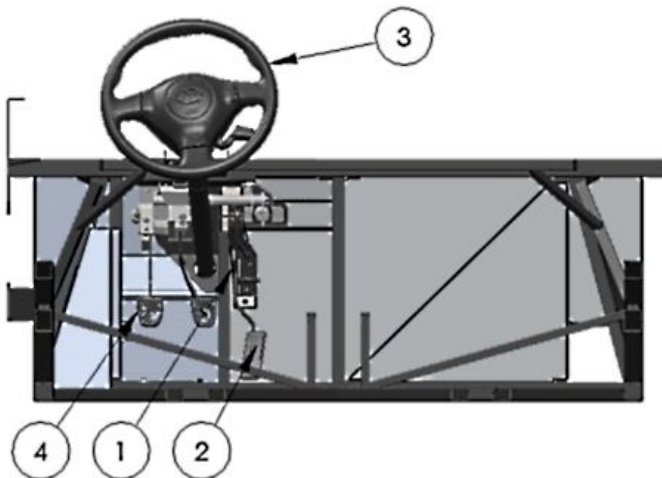


Don't forget to attach the middle bolt from the back side.

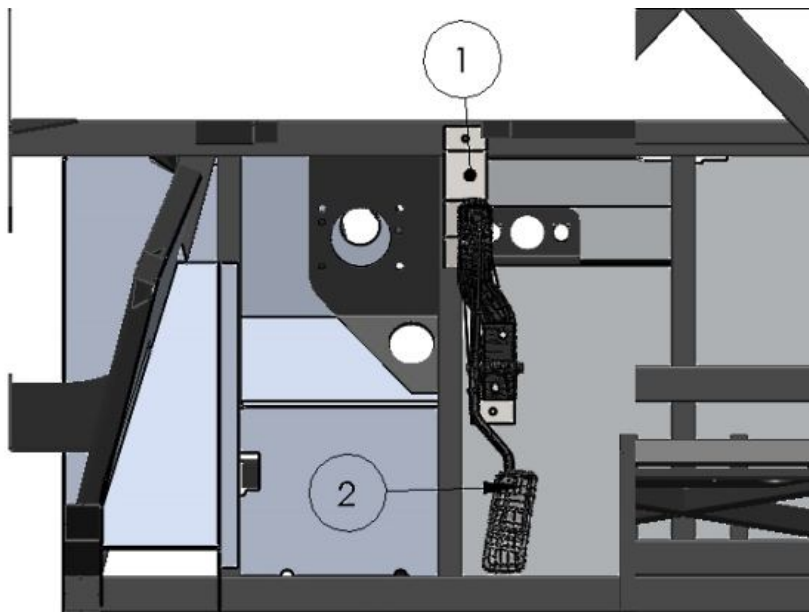
Cable Accelerator Pedal (2002-2005)

🚗 Accelerator pedal, Accelerator cable (Box 10), accelerator pedal mount (Box 10), rivnuts, 1/4"-20 x 0.75" flanged button head screws

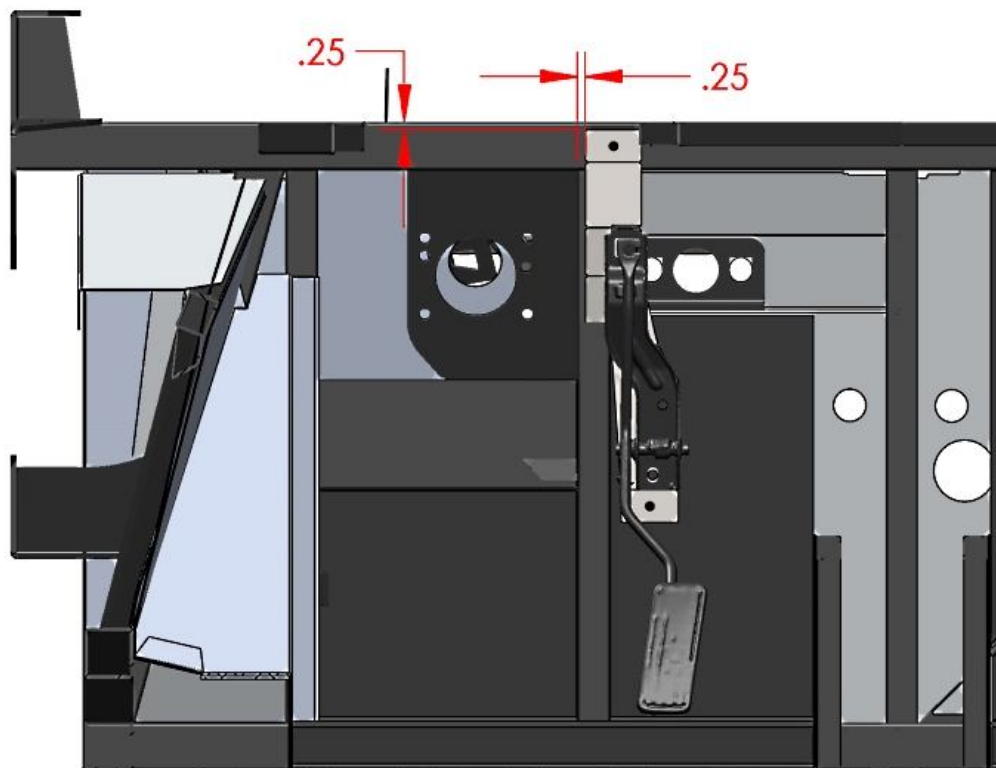
🔧 Drill, wrenches, marker, measuring tape, Rivnut tool, 1/2", 25/64" drill bits, 5/32" hex key, 7/16" wrench



ITEM NO.	PART NUMBER	DESCRIPTION	Default/QTY.
1	60420	02-05 CABLE PEDAL MOUNT	1
2	Cable Accelerator pedal		1
3	Steering Column		1
4	Pedal Box		1



ITEM NO.	PART NUMBER	DESCRIPTION	Default/QTY.
1	80420	02-05 CABLE PEDAL MOUNT	1
2	Cable Accelerator pedal		1



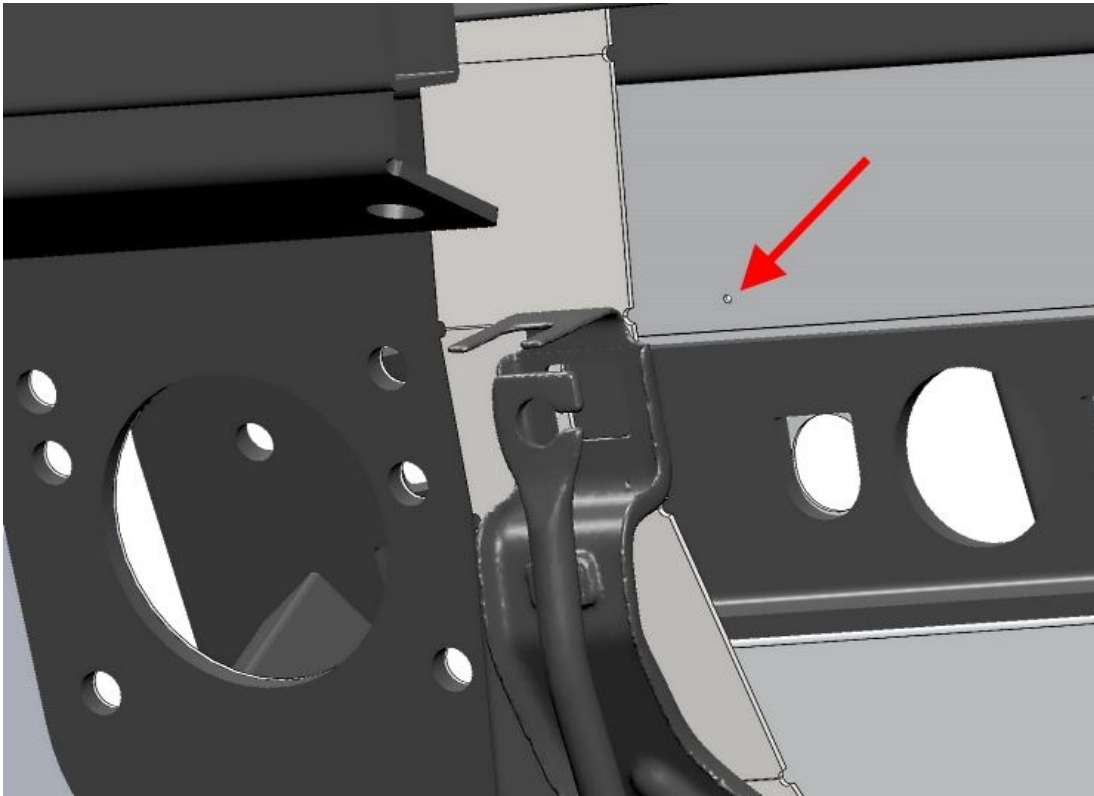
Locate the cable pedal mount on the frame as shown in the picture above and mark the two mounting hole locations.

Drill out the top mark using a $\frac{25}{64}$ inch drill bit and install a $\frac{1}{4}$ " rivnut. (See Appendix for rivnut tool instructions).

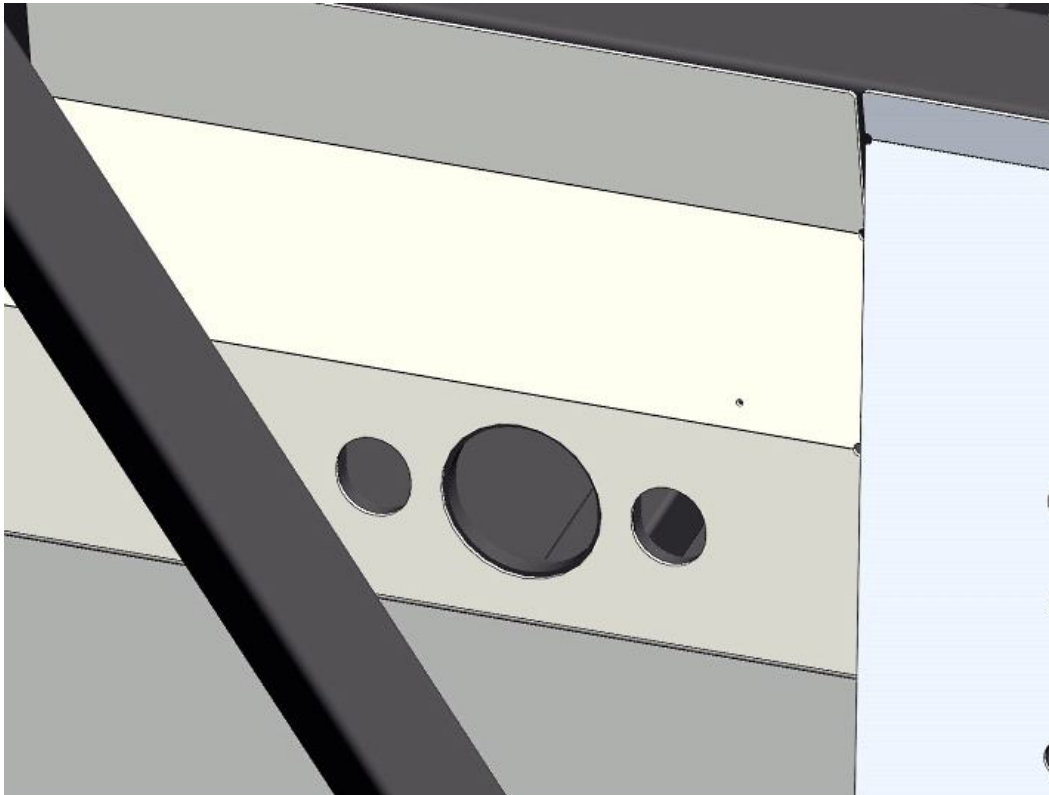
Drill the lower hole with a $\frac{1}{4}$ inch drill bit.

Mount the accelerator pedal to the pedal mount using 1/4"-20 x 0.75" flanged button head screws and locknuts.

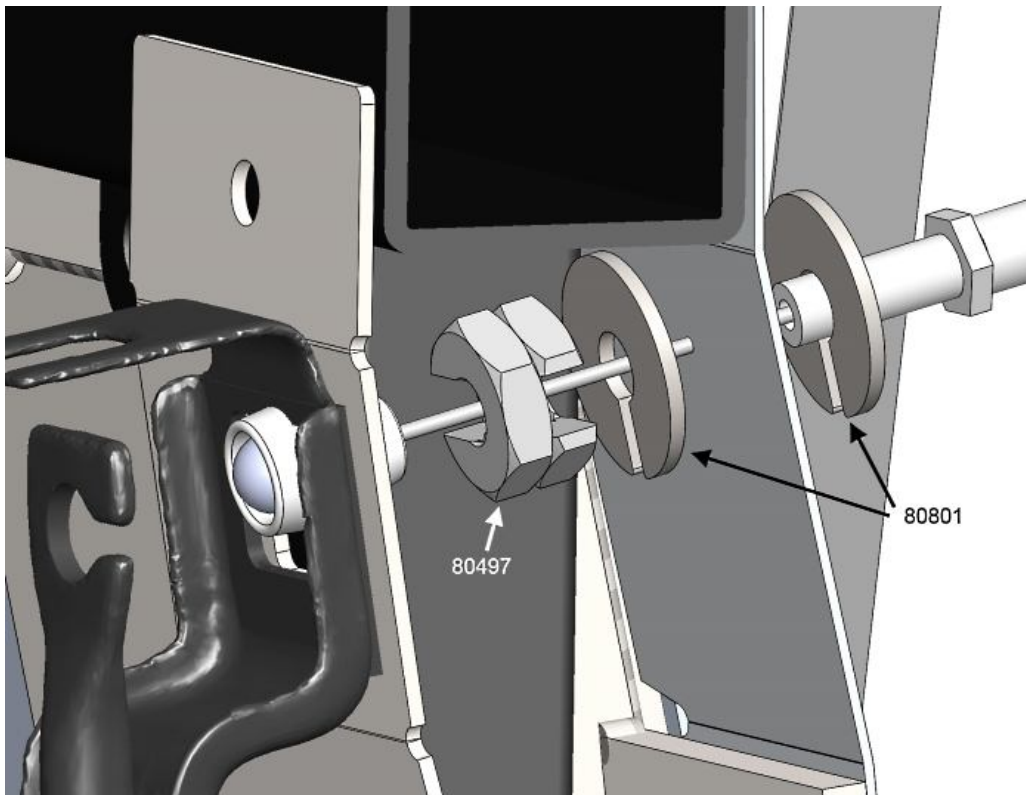
Mount the accelerator pedal mount to the frame using the same 1/4" x 3/4" washer head screws.



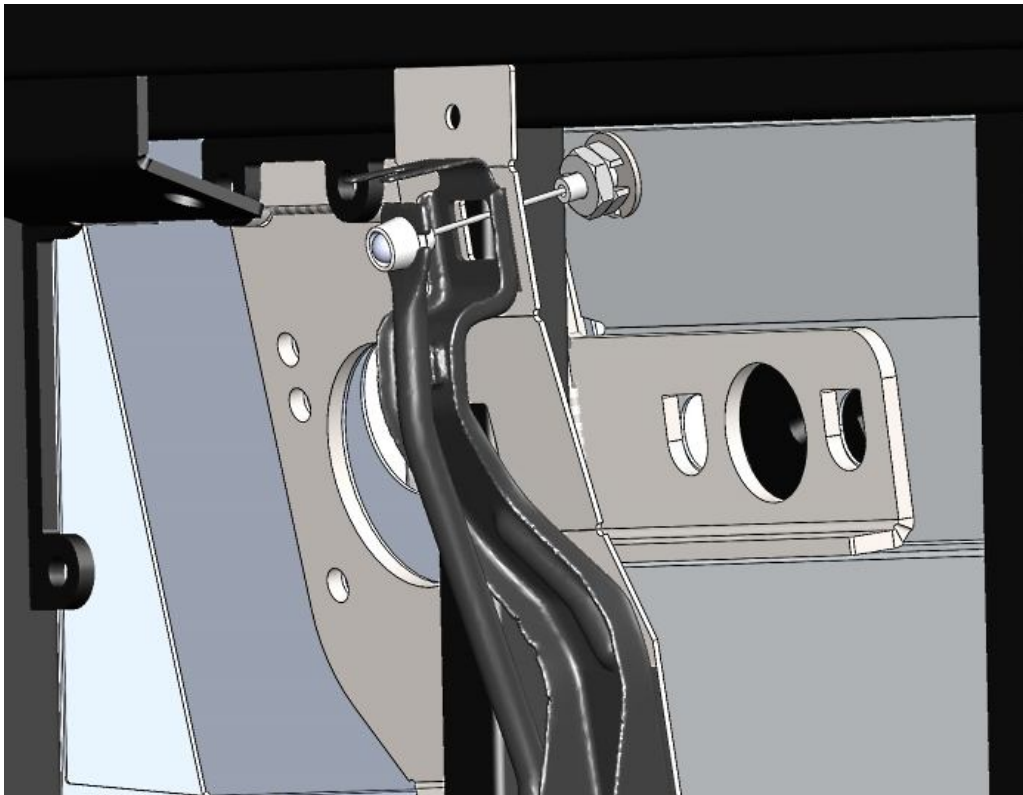
The accelerator cable will go through the aluminum where the small hole is in front of the accelerator pedal.



From the front of the firewall, drill a ½" inch hole through the existing small hole in the panel.



Put a split washer on the end of the accelerator cable then pass the cable through the hole and use the other split washer with the slip-on nut included to attach the cable to the firewall.



Push the nut onto the cable threads and rotate one half of the nut around the threads so it forms a complete nut around the cable then tighten the nut against the firewall.

OEM seats

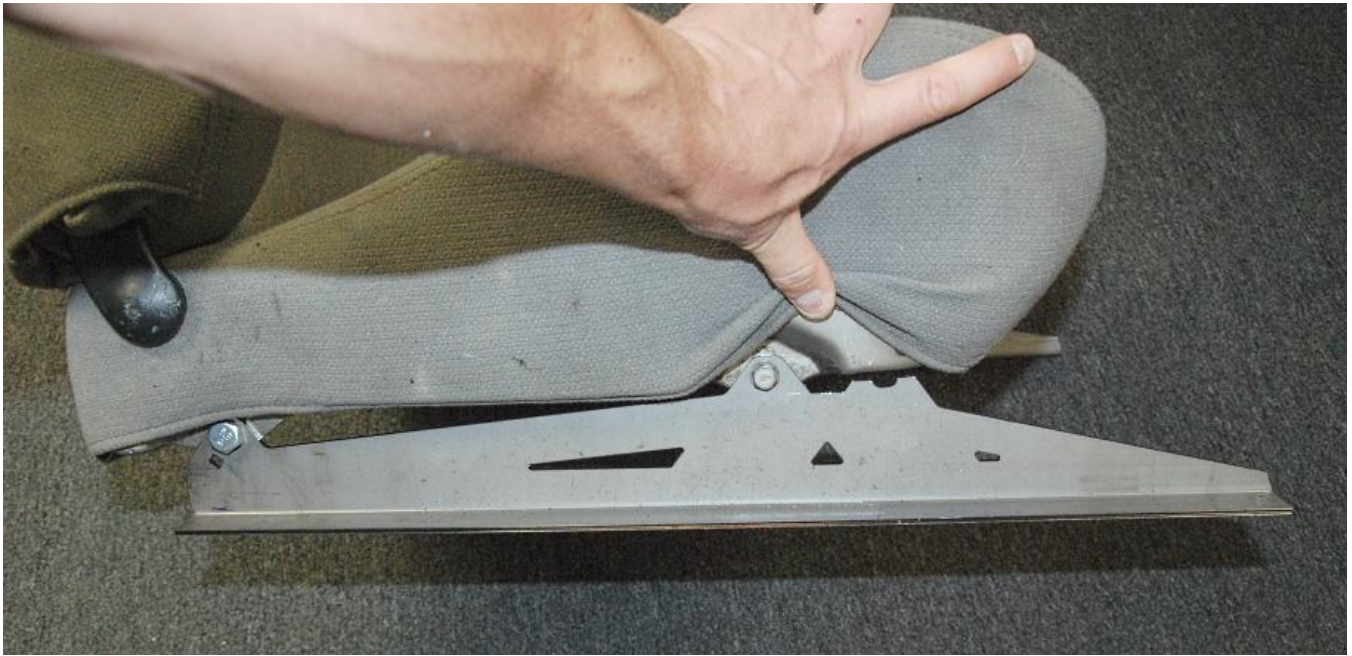
2002-2005 Seats



On the left seat left side, the rear bolt holding the seat hinge must be temporarily removed, because it also holds the seat bracket on.



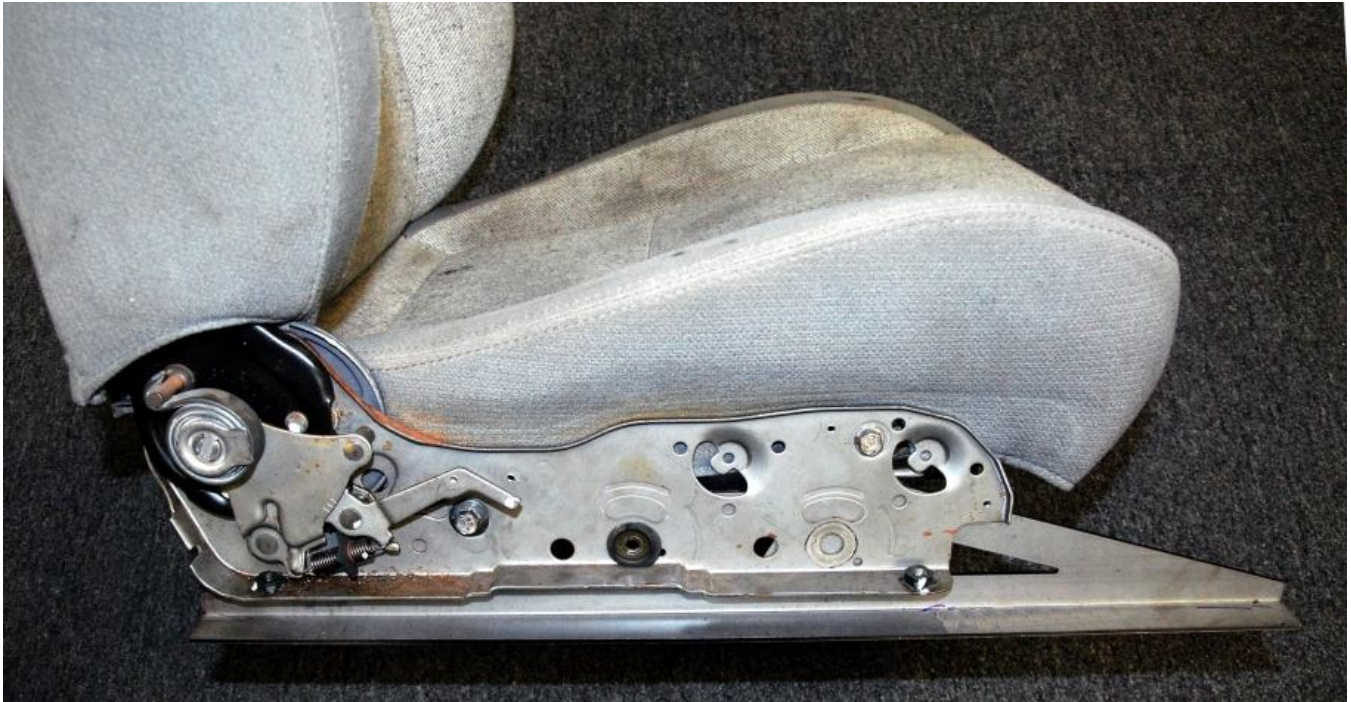
Bolt the seat bracket on using OEM bolts in the top rear hole and the front slot.



On the right side of the early model left seat, the forward hole must be cut in addition to the two long tabs. This cut can be seen above.



The bracket bolts to the seat using OEM hardware in the rear hole and slot of the bracket. Make sure to bolt the seat belt receiver to the seat using the rear bolt.



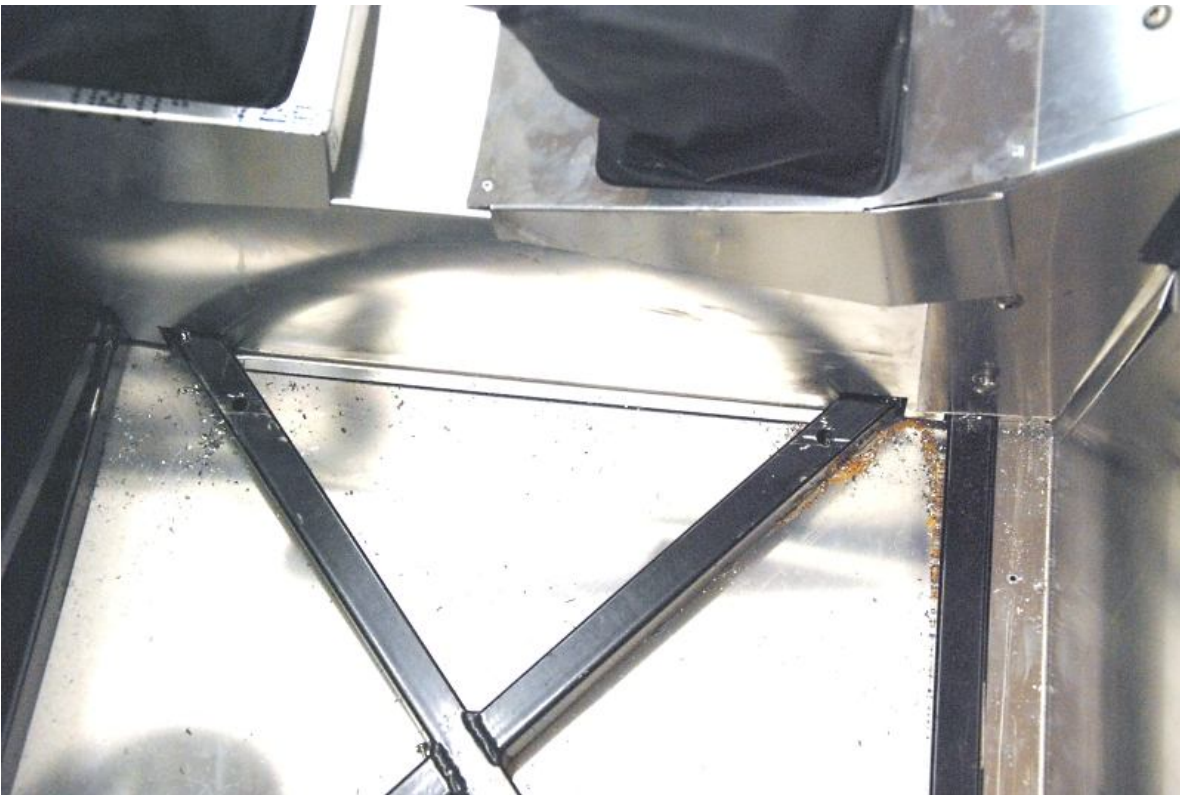
On the right seat, the right side bracket needs to be attached behind the stock seat bracket.



The right seat left side bracket bolts to the seat with two bolts in the front. Make sure to bolt the seat belt receiver to the seat using the rear bolt.



The rear also acts as a hinge so a bolt must be put through the hinge of the seat back into the bracket.



Mount the seat brackets to the chassis by marking where the seat fits on the “x” shape of the tubes. Then drill a hole in each tube to bolt the seat brackets through.

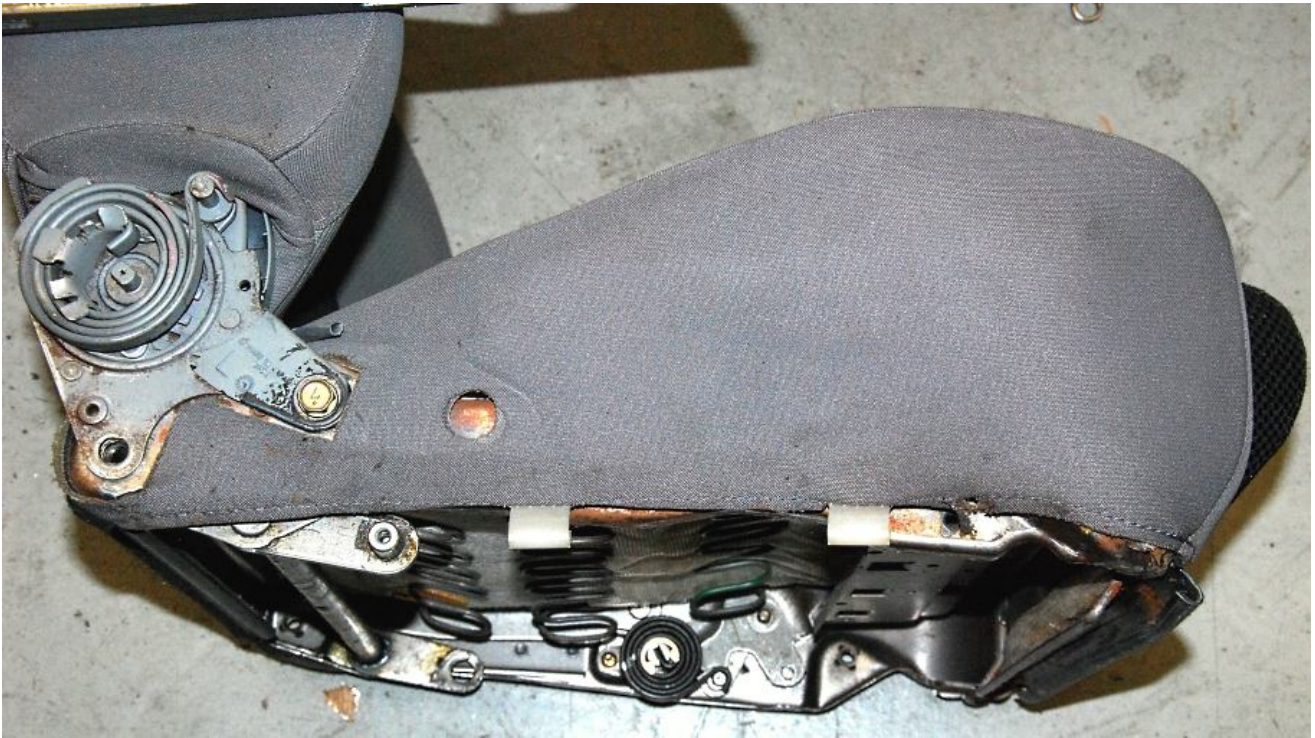


Place the bolt up through the bottom of the tube and seat bracket.



Bolt the seat to the frame.

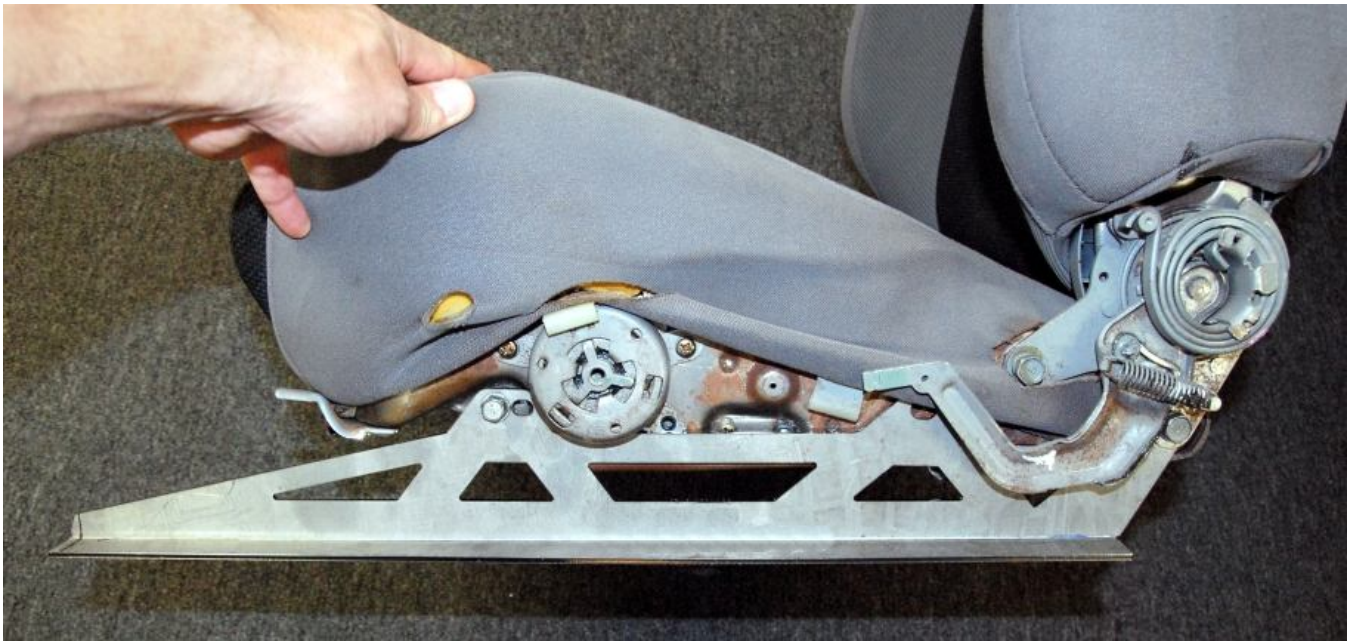
2006-07 Seats



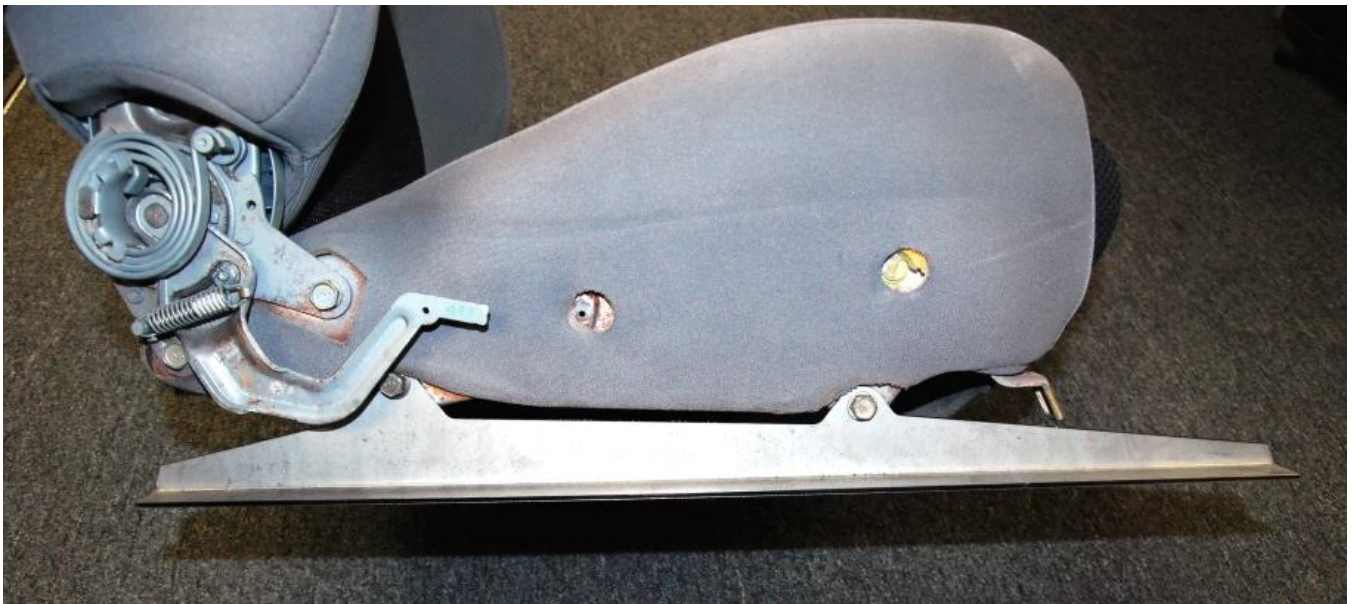
On the right side of the left seat, after the two tabs are cut, mount the bracket using the furthest forward and rear holes using factory OEM bolts. Make sure to bolt the seat belt receiver to the seat using the rear bolt.



Use the provided spacer between the front hole of the bracket and seat in order for the bracket to sit flat.



The left seat left side bracket is bolted on using OEM hardware with the lower rear hole and front slot.



The right bracket needs two large tabs cut off, then the two holes bolt up using stock hardware. Make sure to bolt the seat belt receiver to the seat using the rear bolt.

Windshield

- 🚗 Windshield, windshield surround, 1/2" x 1.25" carriage bolts and locknuts
- 🔧 3/4" socket, ratchet, digital level or measuring tape.
- 👤 We recommend having a professional install the windshield in the surround. They usually have a selection of different trims that can be used around the edge of the glass. Use a small "T" trim to hide the seam but not stand out from the surround.



Fit the windshield surround on the car between the two fender/hood mount brackets that stick up from the frame.



Keep about $\frac{1}{8}$ inch (paint stick) between the windshield frame and door to prevent rubbing. Note, the side mirrors are not mounted yet.



Insert the $\frac{1}{2}$ " x 1.25" carriage bolts and locknuts in the chassis bracket from the inside out so the square head of the bolt goes into the square slot. Tighten them so that you can change the angle of the windshield but it will not drop.

Locate the area in front of the master cylinder.



Cut the area out using the rear hood support aluminum as a maximum guide. The taller part of the aluminum should be centered on the windshield.

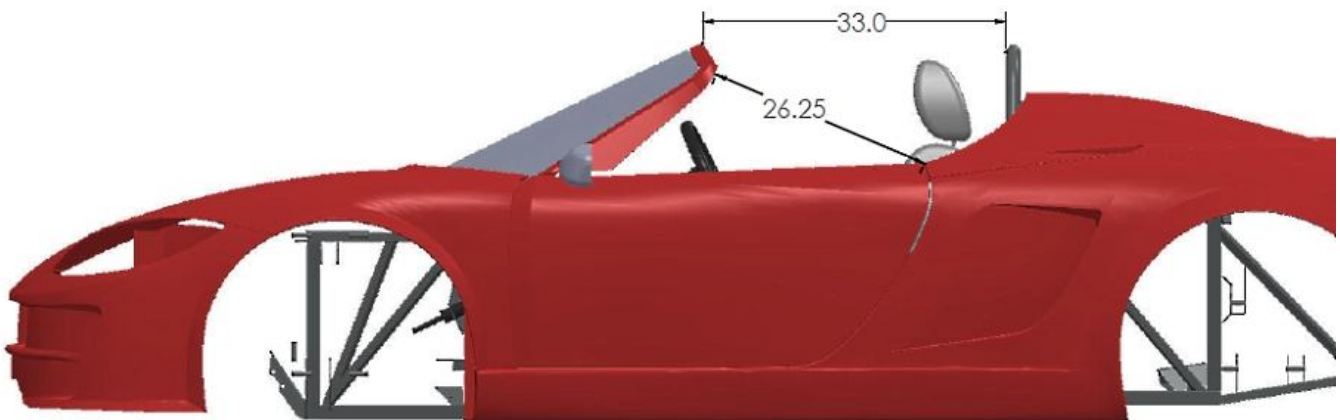


Have the windshield installed in the surround.



Some windshields have the rear view mirror mount already glued in place, if yours does not, have the glass guy attach it while he is there fitting the windshield. Once the glass adhesive is dry, install the OEM Subaru mirror onto the mount.

- ✎ The flat mounting flange on the front of the surround sets the angle for the windshield but there is a little bit of play to adjust it to your preferred look (a little steeper helps if you are over 6 foot tall).



- ✎ If installing the convertible top, set the angle of the windshield to match the dimensions shown.



Measure both corners from the floor to make sure the fame is even then tighten the mounting hardware.



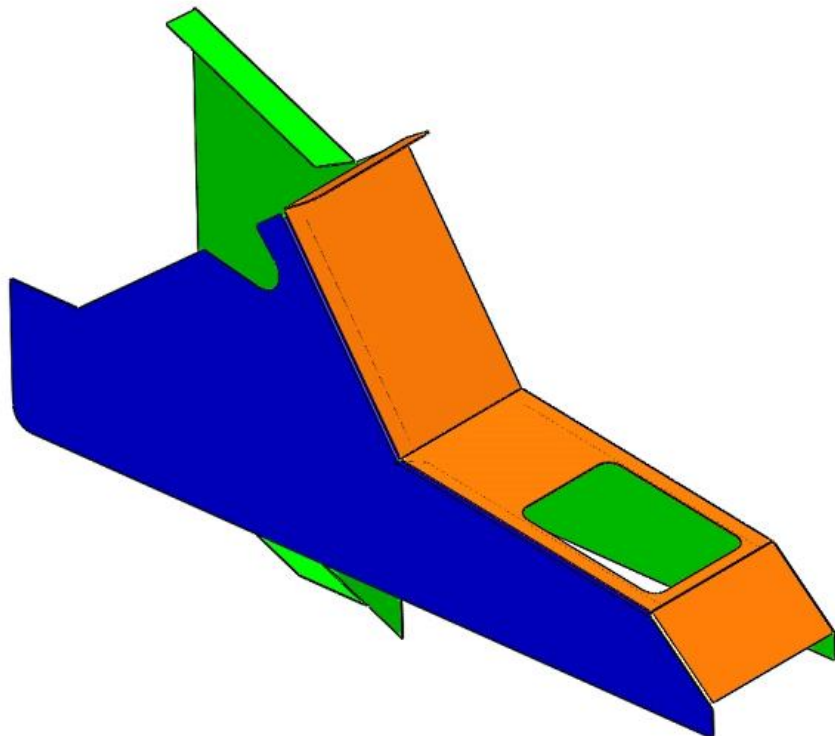
Rivet the front lower flange of the windshield surround to the frame tubes.



Rivet the rear hood support aluminum in-place.

Push some of the push-on weatherstrip onto the tall part of the aluminum.

Center console



Assemble and rivet the center console together.

