



Factory Five Racing, Inc.

Part Number: 15858 Revision: B Effective Date: 2/16/2017 By: Jim Schenck

289 Supplemental Instructions



Table of Contents

289 Supplemental Instructions	1
Rollbar	2
Exhaust.....	3
Bungee Cord mounts.....	4
Fuel Filler neck	5
Door latch components.....	7
Front body mount.....	10
Quickjacks	11
Taillights.....	12
Center dash support	13
Hood scoop Grill	13

Rear Splash guard front aluminum 14

Rollbar



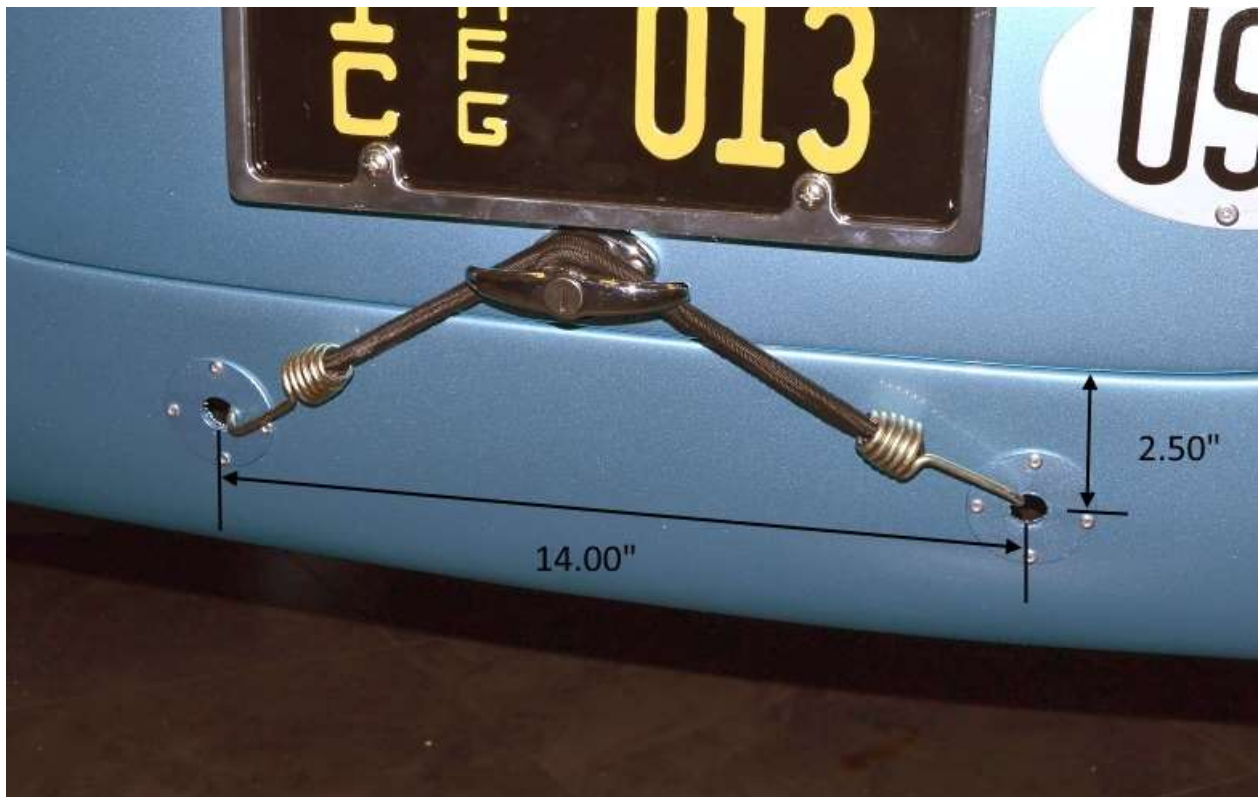
Front lower rollbar mount.

Exhaust



Right side exhaust going under body.

Bungee Cord mounts



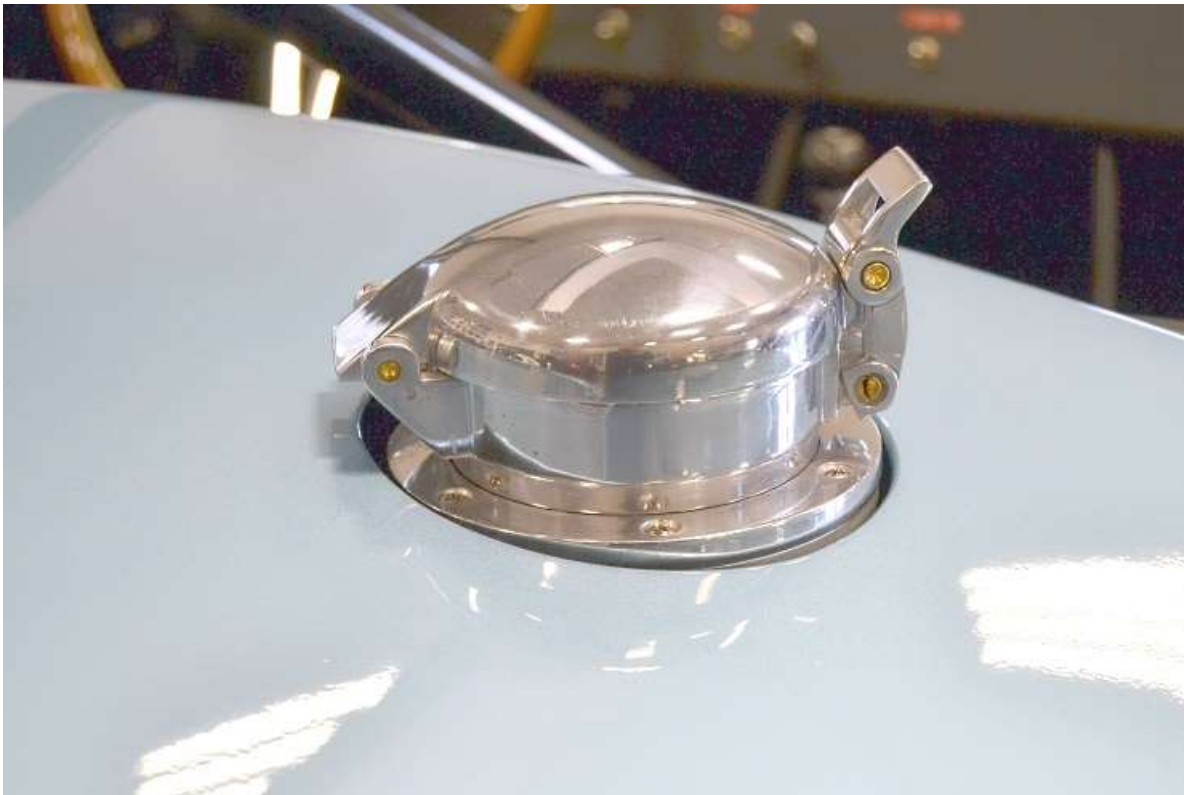
Locate the bungee cord mount holes and plates as shown in the picture above to ensure that the bungee cord is tight.

Fuel Filler neck





Bolt the gas cap to the gas cap mounts with the aluminum spacer(s) between the cap and the mount so that the bottom of the gas cap is flush with the top of the body on the outside of the cap as shown below.



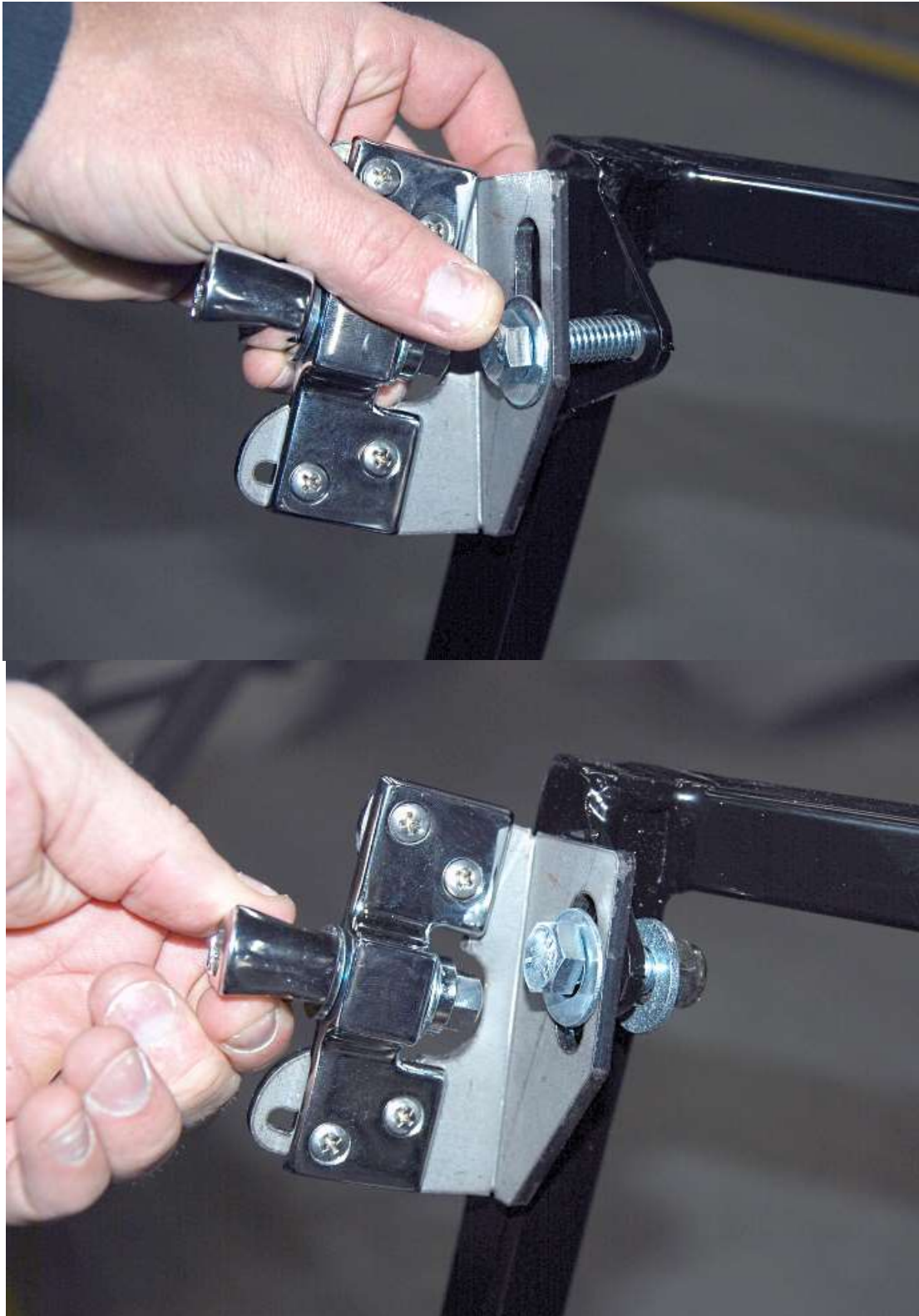
Attach the mounts to the frame under the trunk so that the cap will not hit the body.

Door latch components

-  Door latch components
-  $\frac{3}{8}$ " , $\frac{5}{8}$ " wrenches, Philips head screwdriver

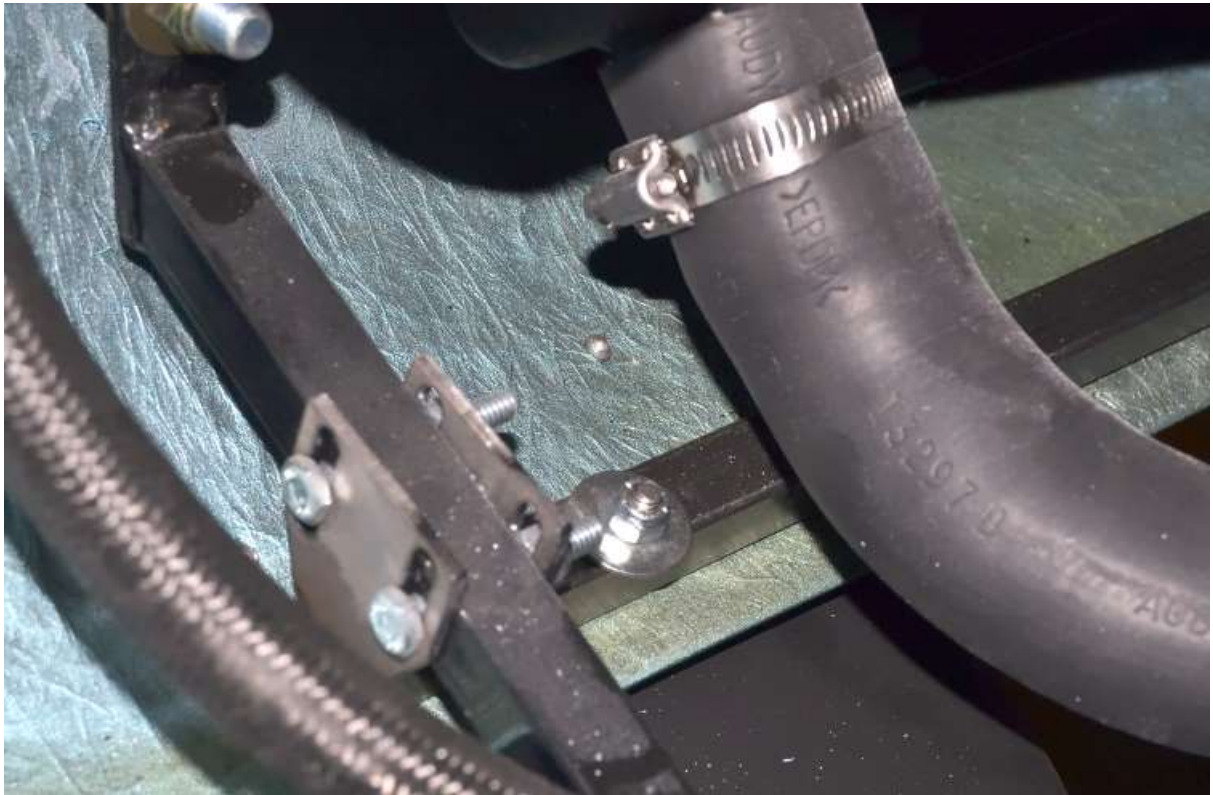


Attach the door striker to the door latch mount using the #10 x $\frac{5}{8}$ " Philips head screws, nuts, $\frac{3}{8}$ " wrench and Philips head screwdriver. Leave them just loose enough so they can slide for adjustment. Right side shown.



Attach the door striker mount to the frame using the $\frac{7}{16}$ " x 1.25" bolt, washers, locknut, and $\frac{5}{8}$ " wrenches. Right side shown.

Front body mount



Locate the front body mount so that the laser cut tabs are on either side of the lower $\frac{3}{4}$ inch front angled tube and about an inch from the edge of the body.

Drill $\frac{1}{4}$ inch holes and attach the body mount to the body using the $\frac{1}{4}$ "x 1.50" bolts provided.



Drill ¼ inch holes and attach the body mount to the lower tubes using the ¼"x 1.50" bolts provided.

Quickjacks



Attach the front quick jacks to the car. The original cars mounted them as shown above.



Attach the rear quick jacks to the car.

Taillights



Attach the rectangular tail lights to the body.

Because the tail light is both the stop and turn signal the tail light convertor must be wired into the harness, do this under the dash.

👉 On the light, the white is the ground wire and the black is the running light wire.

Connect the light wires to the chassis harness.

Center dash support

Follow the directions provided with the center dash support.

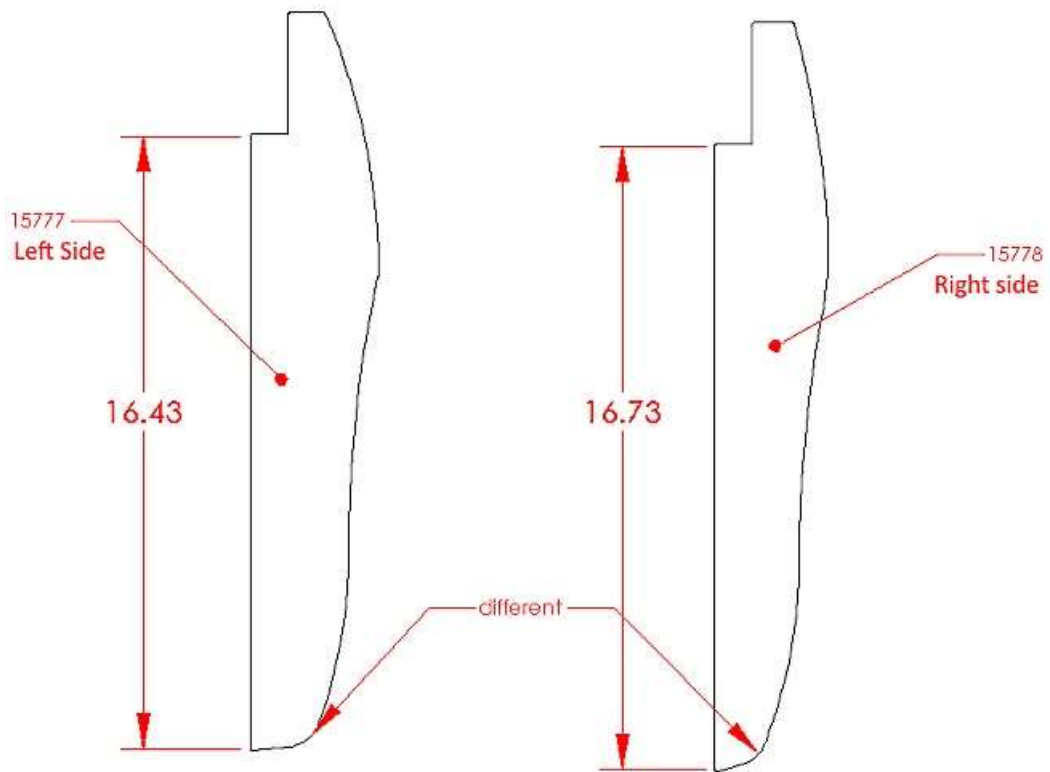
Hood scoop Grill



The hood scoop grill mounts to the underside of the hood, use silicone on top of the tabs to bond it to the hood.



Rear Splash guard front aluminum



These aluminum pieces go between the body and frame in front of the rear wheel.