



Factory Five Racing, Inc.

Part Number: 16117

Revision: B




effective Date: 8/7/17

By: J. INGERSLEV

## Rear 2015 IRS Sway Bar

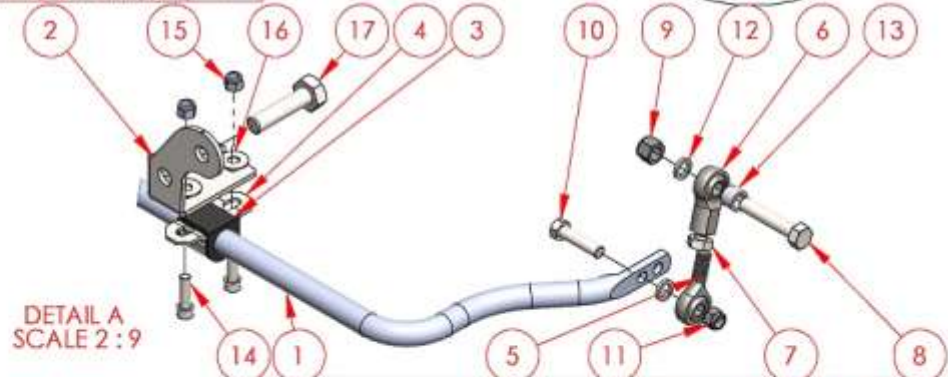
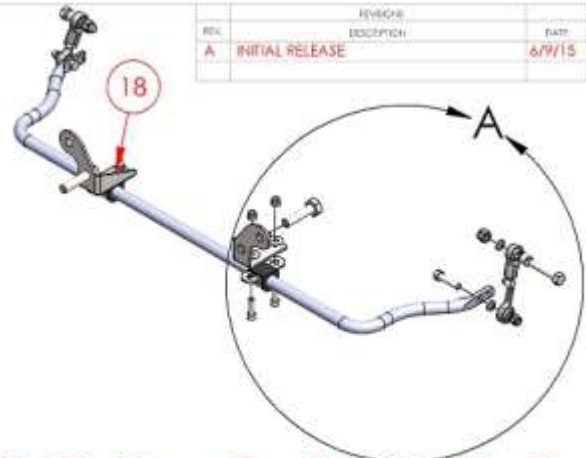
### INSTALLATION INSTRUCTIONS

---

-  Drill,  $\frac{3}{16}$ "",  $\frac{3}{8}$ "",  $\frac{1}{2}$ " drill bits,  $\frac{5}{16}$ " hex key,  $\frac{9}{16}$ "",  $\frac{3}{4}$ "",  $\frac{7}{8}$ "",  $\frac{15}{16}$ " wrenches,  $\frac{3}{4}$ " socket, ratchet, jack, jack stands, hack saw, ruler, marker
-  The rear swaybar is only for use on the Factory Five Roadster and Coupe when used with the Front swaybar.
-  The rear swaybar is not for use on the Factory Five Hot Rod.

ITEM NO.	PART NUMBER	DESCRIPTION	Default/ QTY.
1	15407	FRONT SWAY BAR	1
2	15997	14000 - LEFT SIDE SWAYBAR MOUNT	1
3	Swaybar bushing	7/8" SWAYBAR BUSHING	2
4	Swaybar bushing mount		2
5	MALE ROD END	7/16" BORE x 1/2" THREAD ROD END	2
6	15398 1-2 FEMALE ROD END	1/2" FEMALE ROD END	2
7	HHNUT 0.5000-20-D-N		2
8	HHBOLT 0.5000-20x2.5x1.25-N		2
9	10834	NYLON INSERT LOCKNUT, 1/2-13 UNC	2
10	HHBOLT 0.4375-14x1.75x1.125-N		2
11	NILN-4375C	NYLON INSERT LOCKNUT, 7/16-14 UNC	2
12	13210		4
13	15665	0.50" SPACER	2
14	HX-SHCS 0.375-14x1.25x1.25-N		4
15	13964	NYLON INSERT LOCKNUT, 3/8-14 UNC	4
16	Regular FW 0.375		4
17	HHBOLT 0.6250-11x2.5x1.25-N		2
18	15997	14001 - RIGHT SIDE SWAYBAR MOUNT	1

REV	REVISION	DATE	APPROVED
A	INITIAL RELEASE	6/9/15	



DETAIL A  
SCALE 2 : 9

PROPRIETARY AND CONFIDENTIAL  
THE INFORMATION CONTAINED IN THIS  
DRAWING IS THE SOLE PROPERTY OF  
FACTORY FIVE RACING, INC. ANY  
REPRODUCTION IN PART OR AS A WHOLE  
WITHOUT THE WRITTEN PERMISSION OF  
FACTORY FIVE RACING, INC. IS  
PROHIBITED.

UNLESS OTHERWISE SPECIFIED:		NAME	DATE	 <b>Factory Five Racing, Inc.</b>
ROADSTER	DIMENSIONS ARE IN INCHES	DRAWN	6/9/15	
COUPE	TOLERANCES:- TWO PLACE DECIMAL ±0.01 THREE PLACE DECIMAL ±0.005 FOUR PLACE DECIMAL ±0.001	COMMENTS:		TITLE: <b>2015 IRS SWAYBAR COMPONENTS</b>
USED ON	MATERIAL			SIZE <b>A</b> DWG. NO. <b>15998</b> REV <b>A</b>
APPLICATION	RHD	PERIOD	8/19/2015	SCALE: 1:9 WEIGHT: SHEET 1 OF 1

Parts prep

Paint or coat the swaybar mount plates.

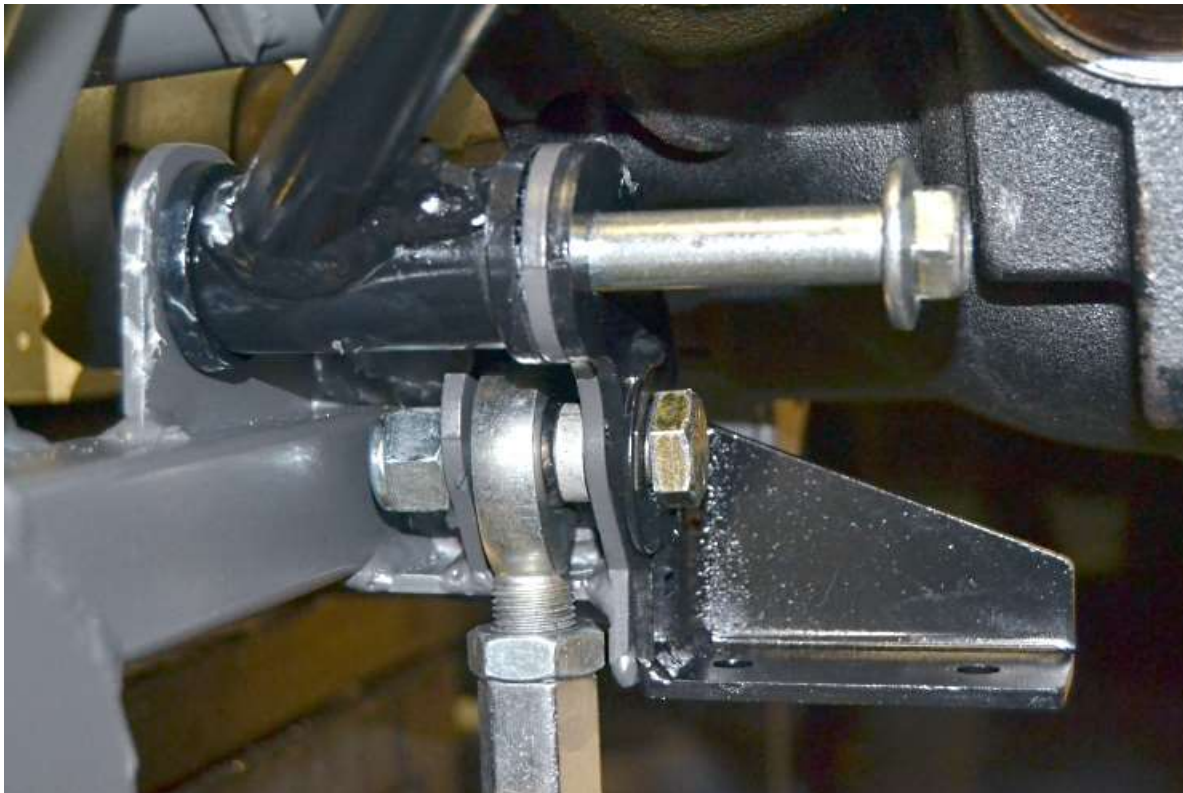


Cut the rod ends and female rod ends so the threads are  $\frac{1}{2}$ " long.

## Installation

Raise the rear of the car and put on jack stands.

Undo and remove the IRS lower control arm front bolt and the Toe link bolt.



Insert the control arm bolt through the swaybar mount and control arm. Use the new included  $\frac{5}{8}$ "x 2.50" bolt for the Toe link.

Hold the control arm and Toe link horizontal and torque the bolts to **135Nm (100 ft-lb)**.



Push the bushings onto the swaybar.



Attach the swaybar bracket to the mount plate holes using a  $\frac{5}{16}$ " hex key and  $\frac{9}{16}$ " wrench.

Torque the mount bolts to **40Nm (30 ft-lb)**.



Screw the male and female rod ends all the way onto each other.



The female rod end has a  $\frac{1}{2}$ " hole while the male rod end has a  $\frac{7}{16}$ " hole.

Unscrew the rod end a thread or two if necessary to easily pass the bolt through the rod end and not preload the suspension.



Attach the female rod end to the control arm using the  $\frac{1}{2}$ " bolts and spacers provided and the male rod end to the swaybar using the  $\frac{7}{16}$ " bolts provided.

Torque the lower bolts to **54Nm (40 ft-lb)**.  
Repeat the process for the other side.