



Factory Five Racing, Inc.

Part Number: 35036

Revision: A

Effective Date: 6/5/19

By: J. INGERSLEV

Hot Rod Truck

Deluxe Nose/Hinge

INSTALLATION INSTRUCTIONS

Table of Contents

Parts prep	1
Grill	1
Radiator	5
A/C Condenser (Optional part)	8
Deluxe Grill Mount Tab assembly	14
Grill/Radiator mount	16
Grill/Radiator mount assembly	18
Grill Surround Assembly install	28
Engine side cover alignment (Optional part)	32
Hood alignment (Optional part)	33
Hood Hinge	38
Part prep	39
Assembly	41



These instructions show installation with the hood hinge and A/C condenser. Notes are made when instructions are different if not using these items.

Parts prep

GRILL



¼" drill bit, drill.



Deluxe Radiator mount assembly



From the outside, insert a 1/4" drill bit through each of the four mounting holes in the grill insert and oval/remove material in the first grill bar by moving the drill bit up and down. Test fit with one of the 1/4" black button head screws, it must be able to get inserted from the inside going out.



Insert the Grill into the grill surround starting at the top.



Push down on the bottom and make sure that the grill is fully seated in the surround.



Carefully turn the assembly over.



From the inside drill through the first fiberglass flange only using a 1/4" drill bit.



From the inside, insert one of the black button head screws.

Make sure that the grill insert is still fully seated then drill the next fiberglass mounting hole. Insert another black button head screw then repeat again for the 3rd and 4th holes.

RADIATOR

- ✂ Marker, saw, ruler, $\frac{1}{4}$ " drill bit, drill.
- 🛠 Radiator



Draw a line $\frac{1}{8}$ " in along the side of the top radiator mounts and cut this area off with a saw.



With the radiator sitting with the hose connections up and the top on the left, put the Grill/radiator mount on top of the radiator mount tabs as shown with the inside of the bracket sitting next to the weld. Note the cut location on the bottom.



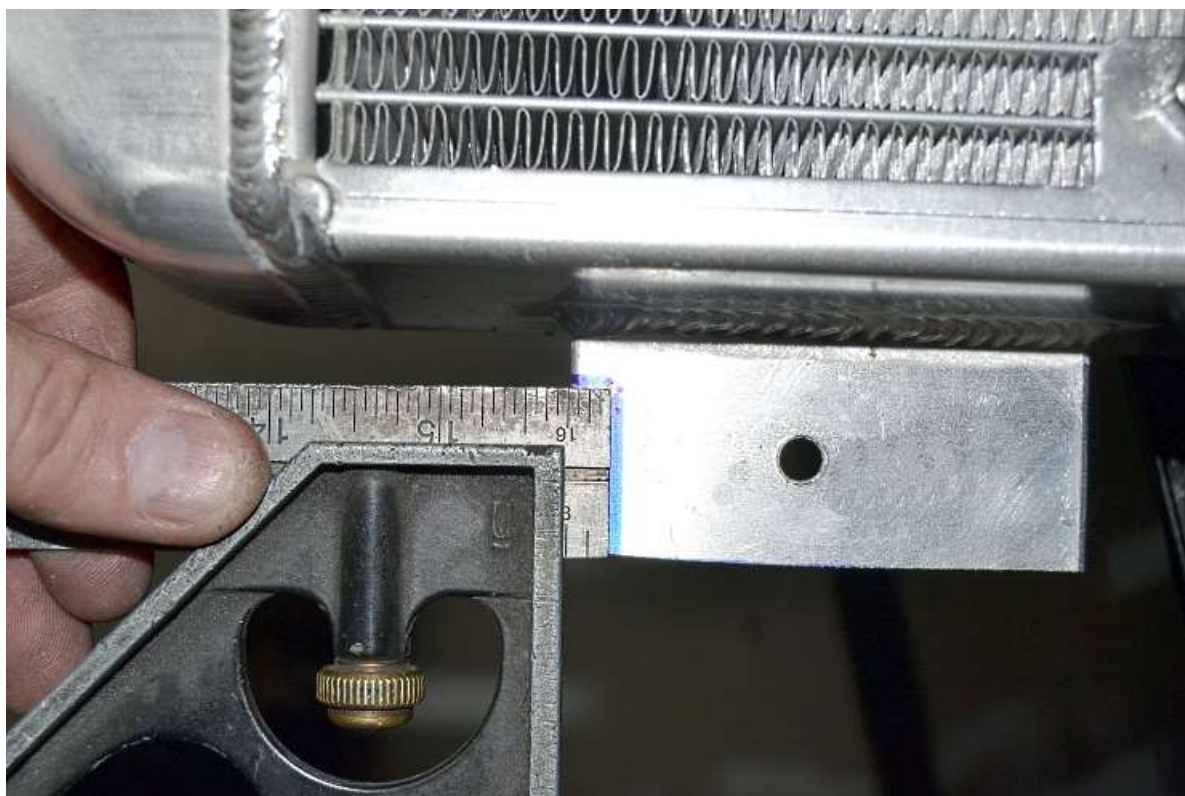
Align the bottom edge of the top rectangular hole with the top edge of the radiator mount tab then mark the 2nd rectangular hole on the radiator mount.



Repeat the process for the other grill/radiator mount on the right side of the radiator again aligning the bottom edge of the top slot.



Remove the grill mounts and drill the center of the mark made with a $\frac{1}{4}$ " drill bit.



If installing a hood hinge, on the top edge of the top mount tabs measure down $\frac{1}{4}$ " and 1" wide.



Use a saw to cut the area off the top mount tabs only.

A/C CONDENSER (OPTIONAL PART)



A/C is Optional



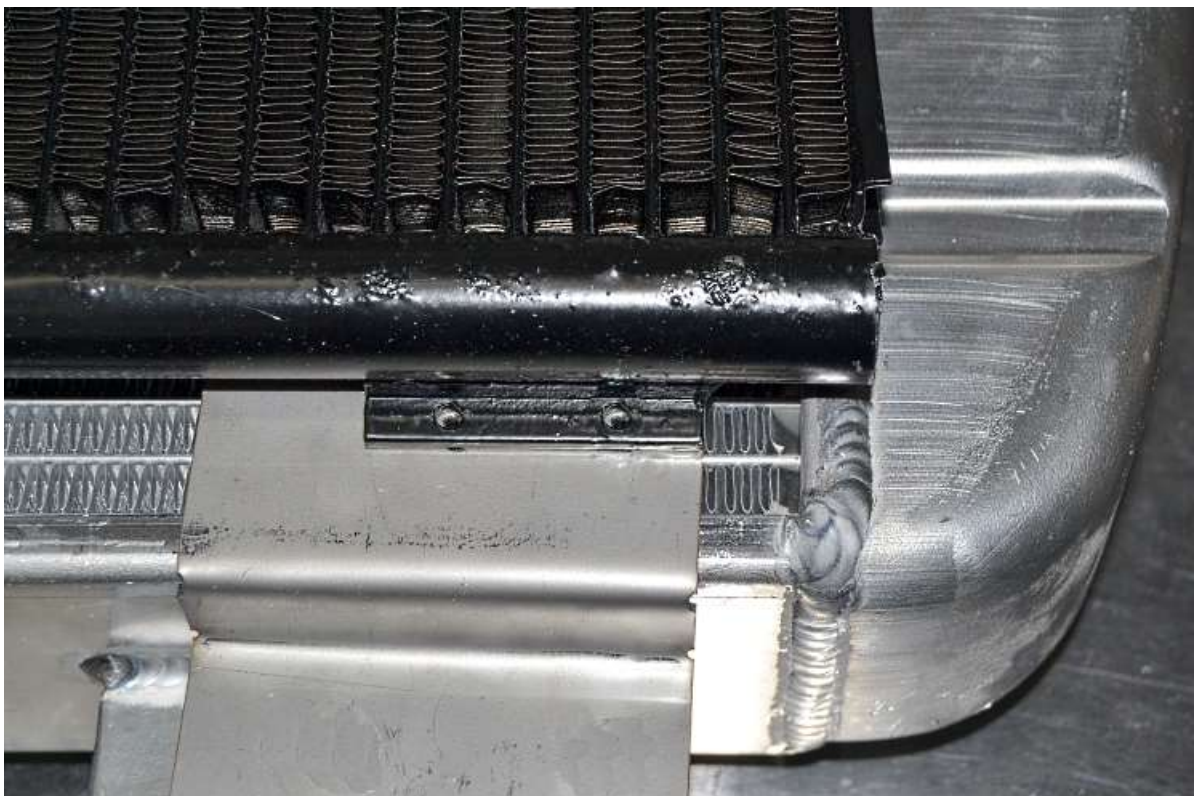
A/C condenser, Condenser mounts, Radiator.



Drill, $\frac{5}{16}$ " drill bit, Philips head screwdriver, $\frac{1}{4}$ " wrench



Place the Condenser mounting brackets on the radiator and under the condenser so that the top just covers the tank weld.



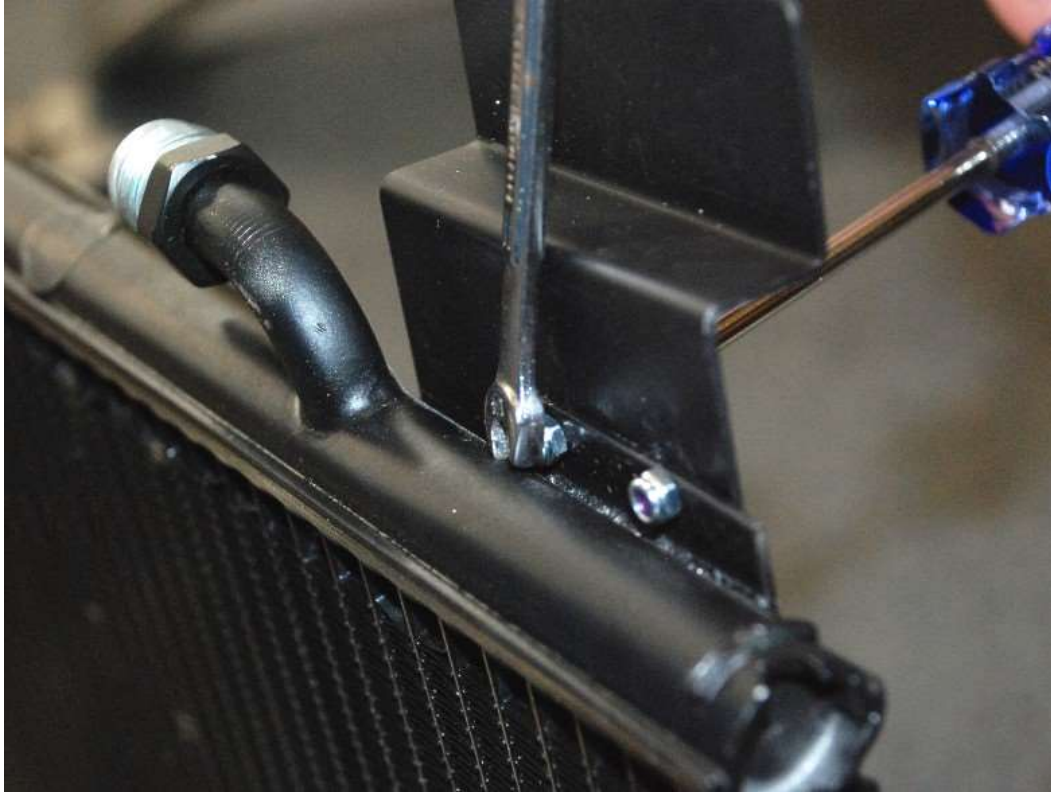
Align the top of the mounting tab with the top of the Condenser bracket then mark the condenser holes on the mounting tabs.



Position the strange looking lower mounting tabs so they align with the lower radiator mount. Mark the condenser holes on the mounting tabs.



Remove the mount brackets and drill $\frac{1}{8}$ " holes at the locations marked.



Use the supplied 4-40 x $\frac{5}{16}$ " screws and lock nuts to attach the brackets to the Condenser. Do not fully tighten the screws; leave them so that the brackets can get moved slightly. Use a $\frac{1}{4}$ " wrench and Philips head screwdriver. Note the direction the screws are inserted.



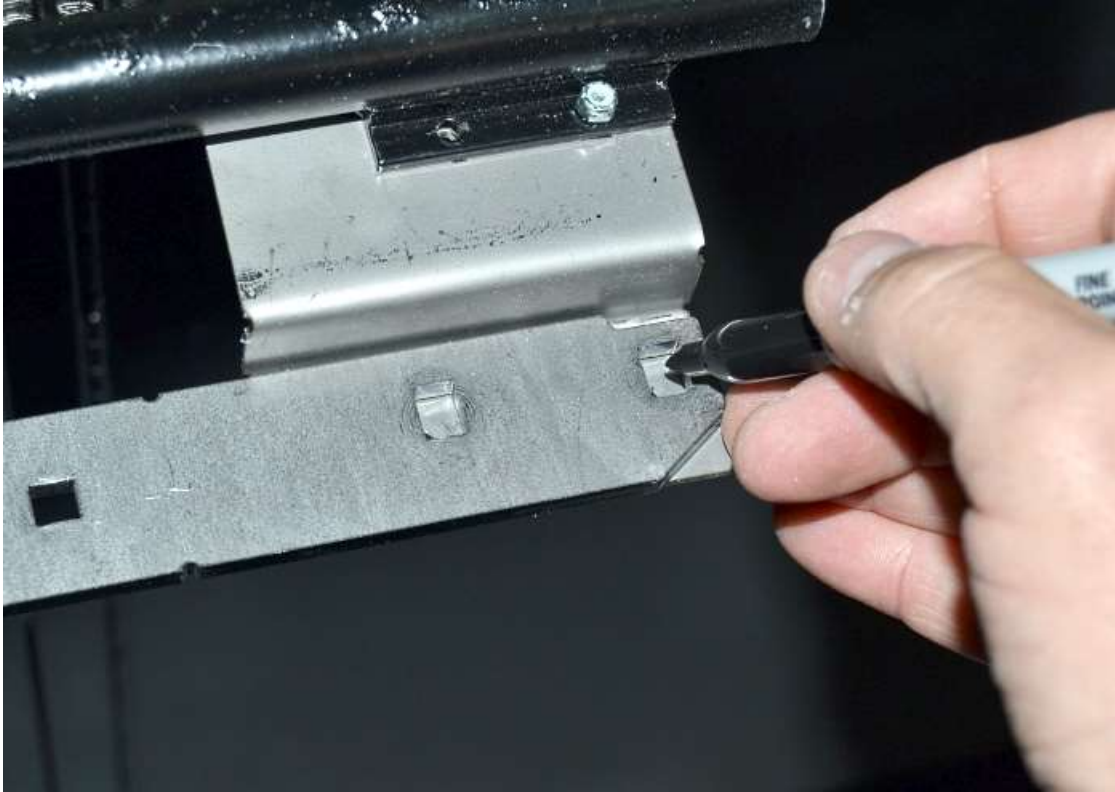
Place the grill/radiator mount with the cut-out on the condenser mounts on the side with the fittings. Aligning the top of the two mounts. Note the angle cut on the bottom is on the inside.



Mark the two top rectangular holes and the lower rectangular hole on the lower mount.



Place the other grill/radiator mount on the condenser mounts on the side with the fittings. Aligning the top of the two mounts. Note the angle cut on the bottom is on the inside.



Mark the two top rectangular holes and the lower rectangular hole on the lower mount.



Remove the grill/radiator mounts and drill the center of the rectangle mark using a $\frac{5}{16}$ " drill bit.

DELUXE GRILL MOUNT TAB ASSEMBLY

- ✂ $\frac{11}{32}$ " deep socket, $\frac{1}{4}$ " drive handle
- 🔩 Push nuts, $\frac{1}{4}$ "x $\frac{3}{4}$ " carriage bolts



On the edge of a bench, put one of the $\frac{1}{4}$ "x $\frac{3}{4}$ " carriage bolts down followed by one of the Grill mount tabs.






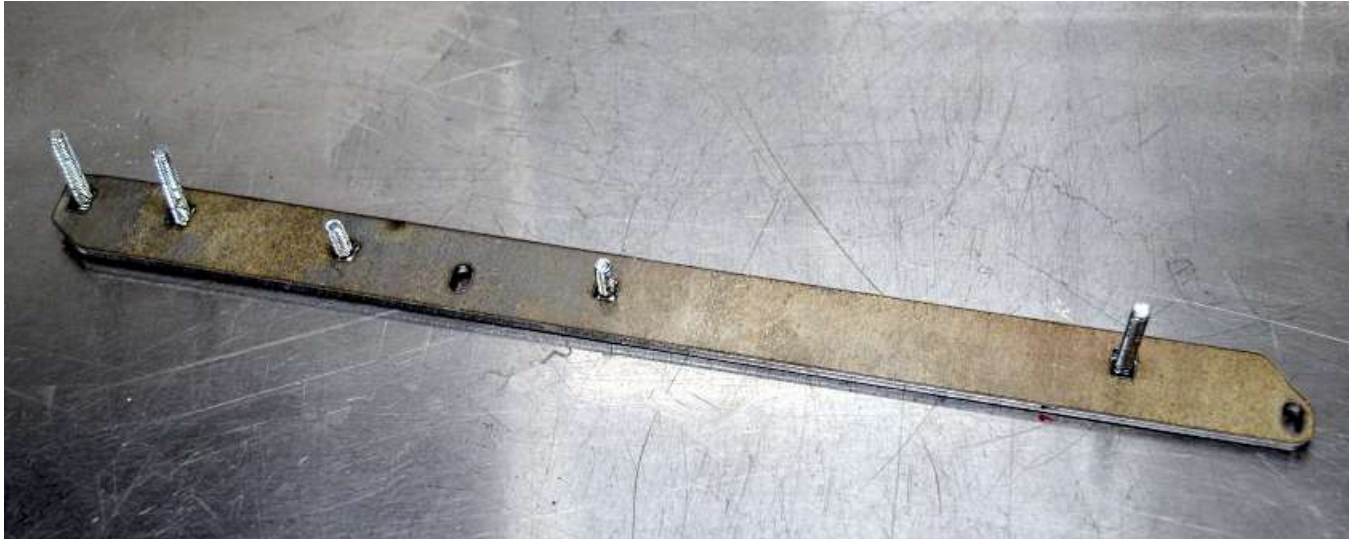
Place one of the push nuts on top of the carriage bolt.



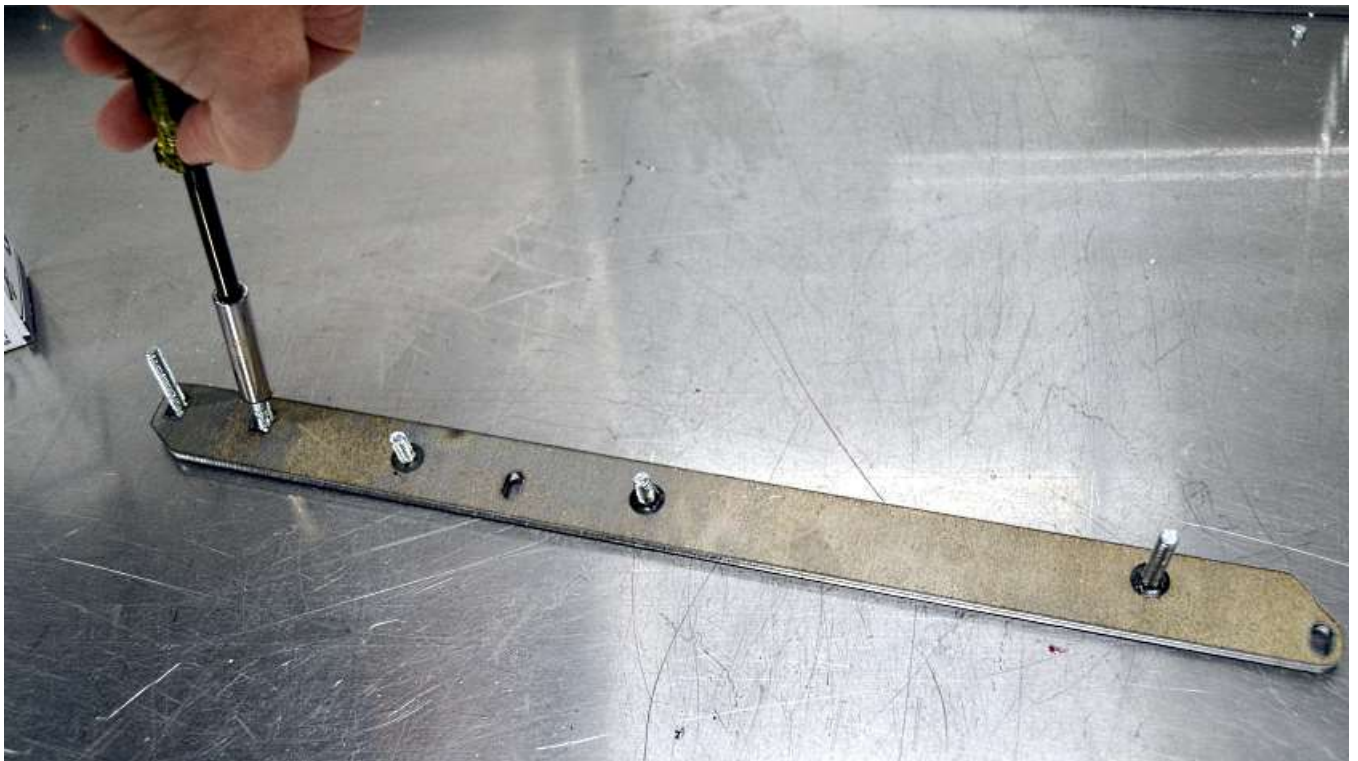
Use an $\frac{11}{32}$ " deep socket and handle to push the push-on nut down to touch the bracket and hold the carriage bolt in place.

GRILL/RADIATOR MOUNT

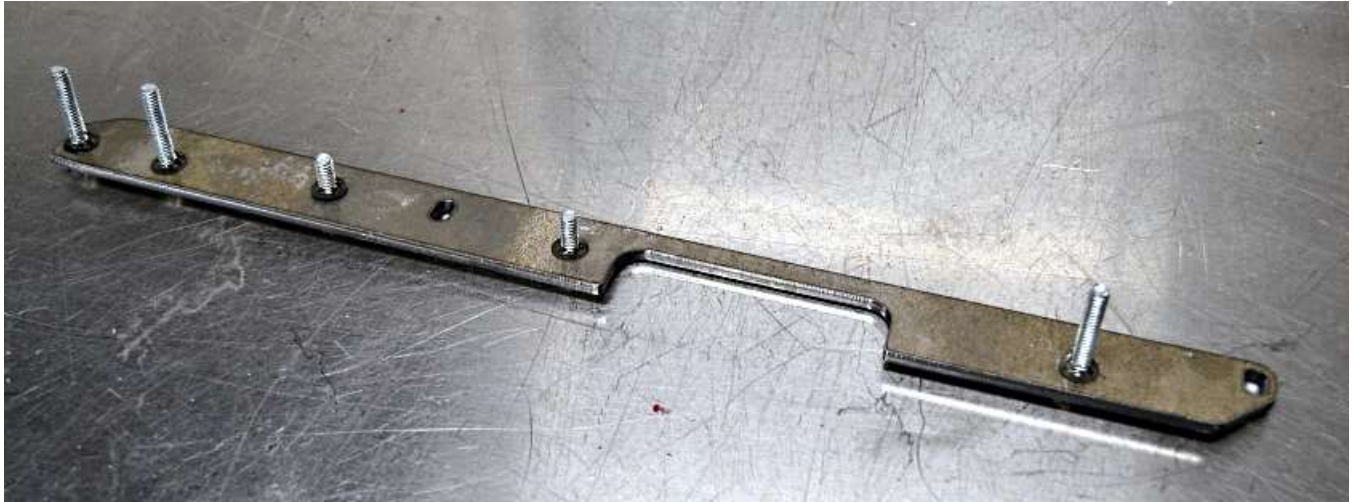
-  $\frac{11}{32}$ " deep socket, $\frac{1}{4}$ " drive handle
-  Grill/Radiator mounts, Push nuts, $\frac{1}{4}$ "x $\frac{3}{4}$ " & 1.50" carriage bolts
-  The top $\frac{1}{4}$ "x 1.50" carriage bolt is only used for the hood hinge. If a hinge is not used, do not install the top carriage bolt.



Starting with the left mount, insert $\frac{1}{4}$ "x 1.50" carriage bolts through the top two rectangle holes and the bottom rectangle hole and $\frac{1}{4}$ "x $\frac{3}{4}$ " carriage bolts through the middle square holes as shown.

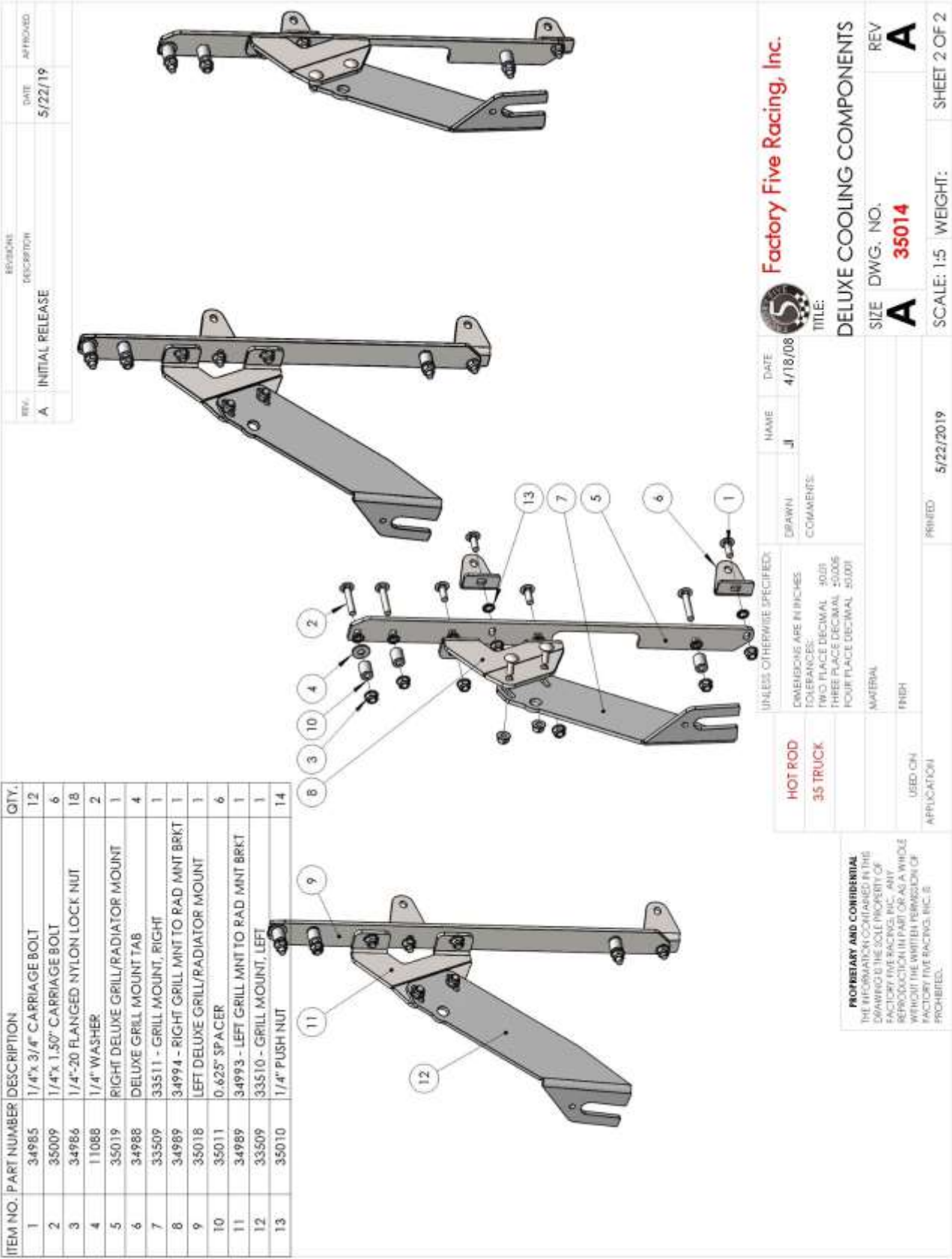


Use the $\frac{11}{32}$ " deep socket and handle to push the push-on nuts onto all of the bolts.



Repeat this same process for the right-side mount as shown.

Grill/Radiator mount assembly



✂ $\frac{7}{16}$ " deep socket, ratchet, $\frac{7}{16}$ " wrench, $\frac{5}{32}$ " Hex key



On the left Grill/Radiator mount place the left Grill mount to Radiator mount bracket as shown.



Screw $\frac{1}{4}$ " flange nuts onto the bracket with a $\frac{7}{16}$ " deep socket until the bracket is just loose enough to slide.



Repeat the process for the right-side Grill/Radiator mount bracket.



Take the four grill mount tabs and put them on the black grill insert bolts with the bent tab pointed out. Hold the tab on with a 1/4" lock nut using a 7/16" wrench and 5/32" Hex key. Leave the locknut just loose enough so the tab can rotate slightly.



Grill mount tabs on the grill surround.



Hold the right-side Grill/Radiator mount assembly and insert a 1/4"x 3/4" carriage bolt from the outside through the Grill mount to Radiator mount lower square hole.



Place the right Grill/Radiator mount assembly on the right-side mount tabs in the grill surround.



Attach the assembly using 1/4" locknuts leaving them just loose enough so the plate can slide.



Hold the left side Grill/Radiator mount assembly and insert a 1/4"x 3/4" carriage bolt from the outside through the Grill mount to Radiator mount square lower square hole.



Attach the assembly using ¼" locknuts leaving them just loose enough so the plate can slide.



The top ¼"x 1.50" carriage bolt is only used for the hood hinge.



If installing A/C place the Condenser over the studs and let it sit on the Grill/Radiator mount plates. Slide the plates out if necessary so it sits flat.



If not using an A/C and not using a hood hinge, the following spacers do not need to be used.



If installing a hood hinge, place a $\frac{1}{4}$ " washer followed by a $\frac{5}{8}$ " spacer on the top 1.50" studs.



Place only $\frac{5}{8}$ " spacers on the other two 1.50" studs.



Repeat for the opposite side.



Place the radiator onto the assembly, for the upper mount it will go onto the 2nd stud only.



Fasten the bottom of the radiator to the grill surround assembly using $\frac{1}{4}$ " locknuts and a $\frac{7}{16}$ " deep socket.



If not installing a hood hinge attach the top radiator locknuts.

Grill Surround Assembly install



$\frac{7}{16}$ " wrench



Grill surround assembly, Grill mounts.



If not already on, put the Grill mounts on frame behind the front upper control arm bolts leaving the bolts just loose enough so they can rotate slightly.



Insert another $\frac{1}{4}$ "x $\frac{3}{4}$ " carriage bolt through the left upper Grill mount to Radiator mount square hole



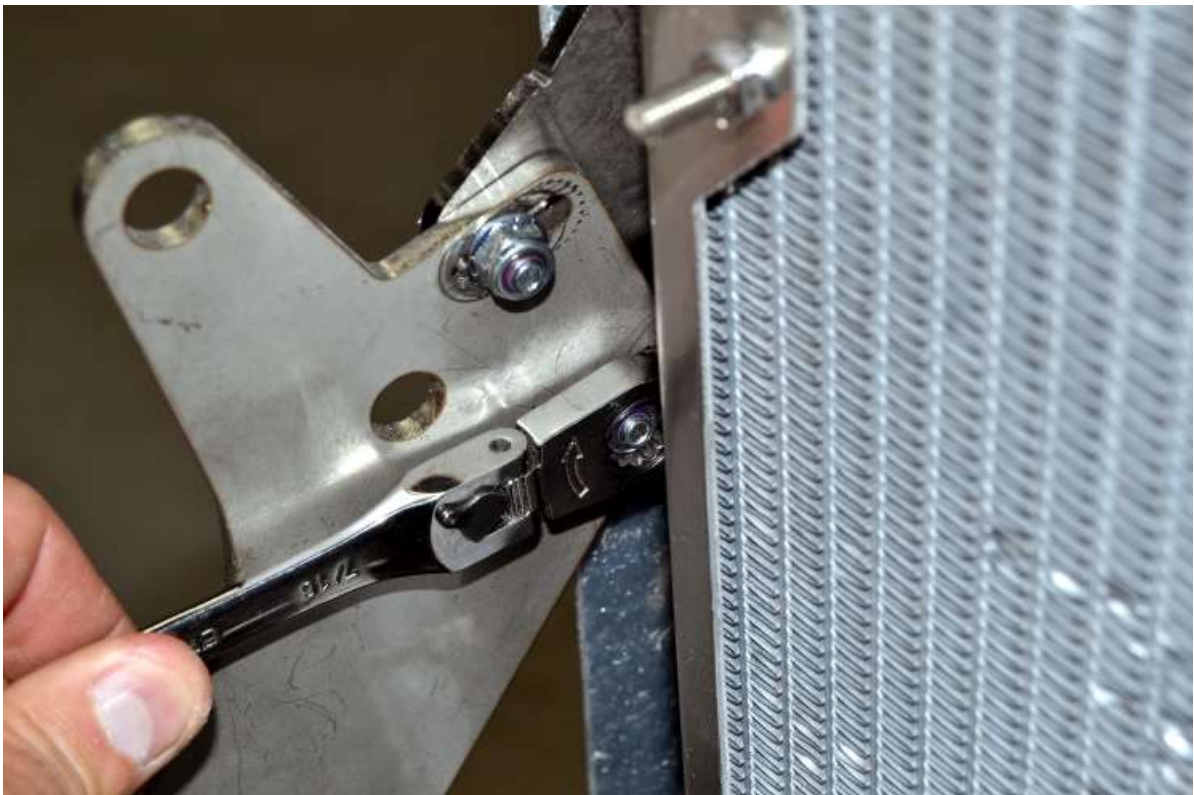
Hold the grill surround up to the outside of the right Grill mount on the frame and put the lower carriage bolt through the slot.



On the left side put both carriage bolts through the Grill mount and spin on 1/4" locknuts.



On the Right side insert the upper carriage bolt and spin on the 1/4" locknuts.



Use a 7/16" wrench to tighten the locknuts so that the Grill surround can just slide and stay in place if needed.



Grill surround assembly mounted on the frame.

ENGINE SIDE COVER ALIGNMENT (OPTIONAL PART)



✂ $\frac{7}{16}$ " wrench



If installing engine side covers hold up the cover to the grill surround and under the body trim line at the back. With the help of a friend pivot or slide the grill surround to set an even gap along the height of the side cover then tighten up the grill mount to grill surround carriage bolt locknuts.

Repeat this procedure for the opposite side engine cover.

HOOD ALIGNMENT (OPTIONAL PART)

-  Kit large rubber bumpers
-  Masking tape, $\frac{7}{16}$ " wrench



If installing a hood, place a couple of large rubber bumpers from the secondary body fasteners in the recess on top of the grill surround.



Hold the bumper to the grill surround with some masking tape.



Place a couple of bumpers with tape on the back hood area on the body.



Place the hood on the car.



Set the gap along the front and back edge of the hood.



If running engine side covers, recheck the side cover with the hood on making sure the gap along the top of the side cover is even. Readjust the grill surround if necessary.

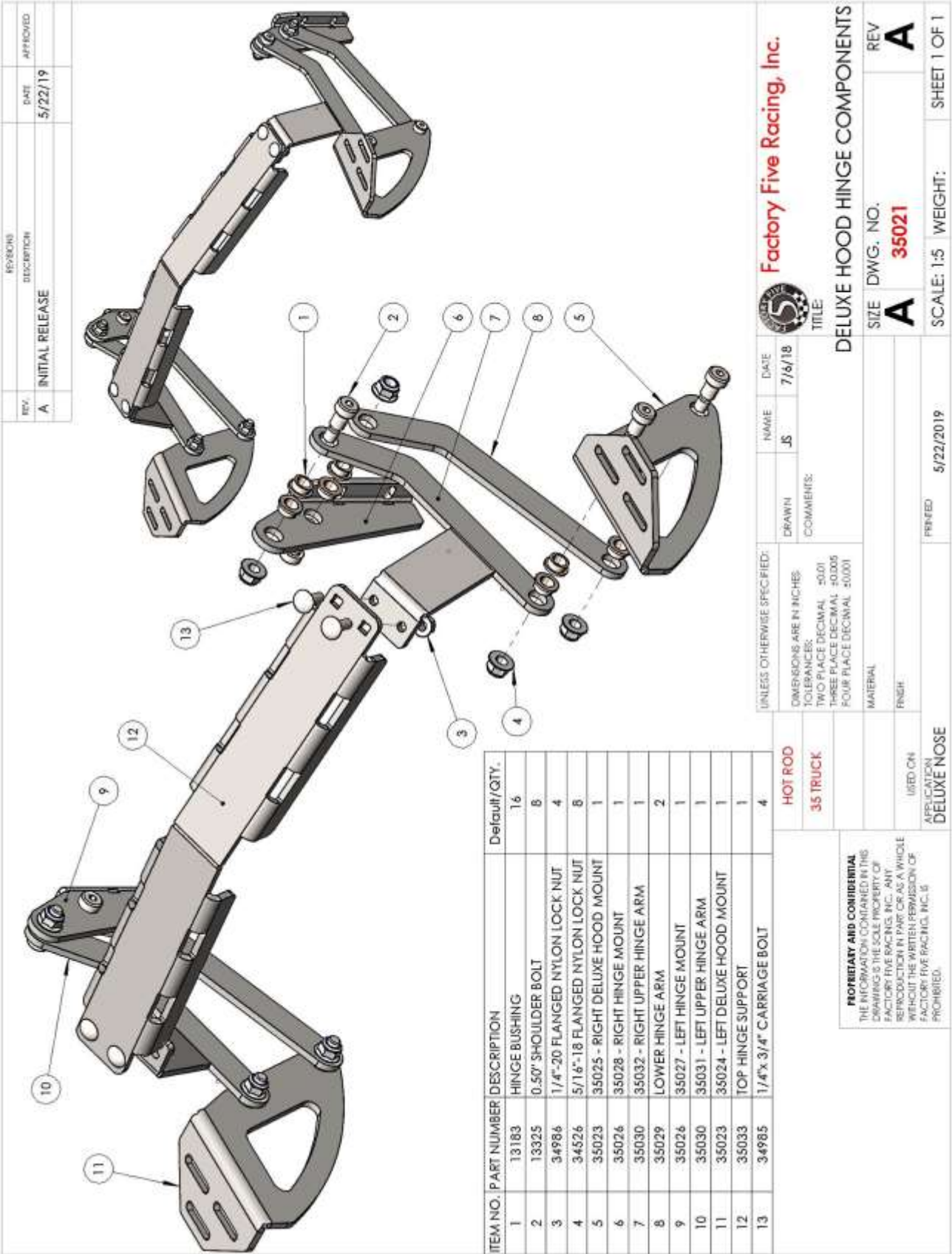


Remove the side covers if still on and check the clearance between the bottom of the radiator and the frame, you should have at least $\frac{1}{8}$ ". If necessary the grill surround can be lifted up on the Grill mount to Radiator mounts.



Tighten the lock nuts for the Grill mount to Radiator mounts afterwards if this is done.

Hood Hinge



-  Deluxe hood hinge components
-  $\frac{5}{32}$ ", $\frac{3}{16}$ " hex keys, $\frac{7}{16}$ " socket, ratchet, $\frac{1}{2}$ " wrench, $\frac{25}{64}$ " drill bit, marker, drill

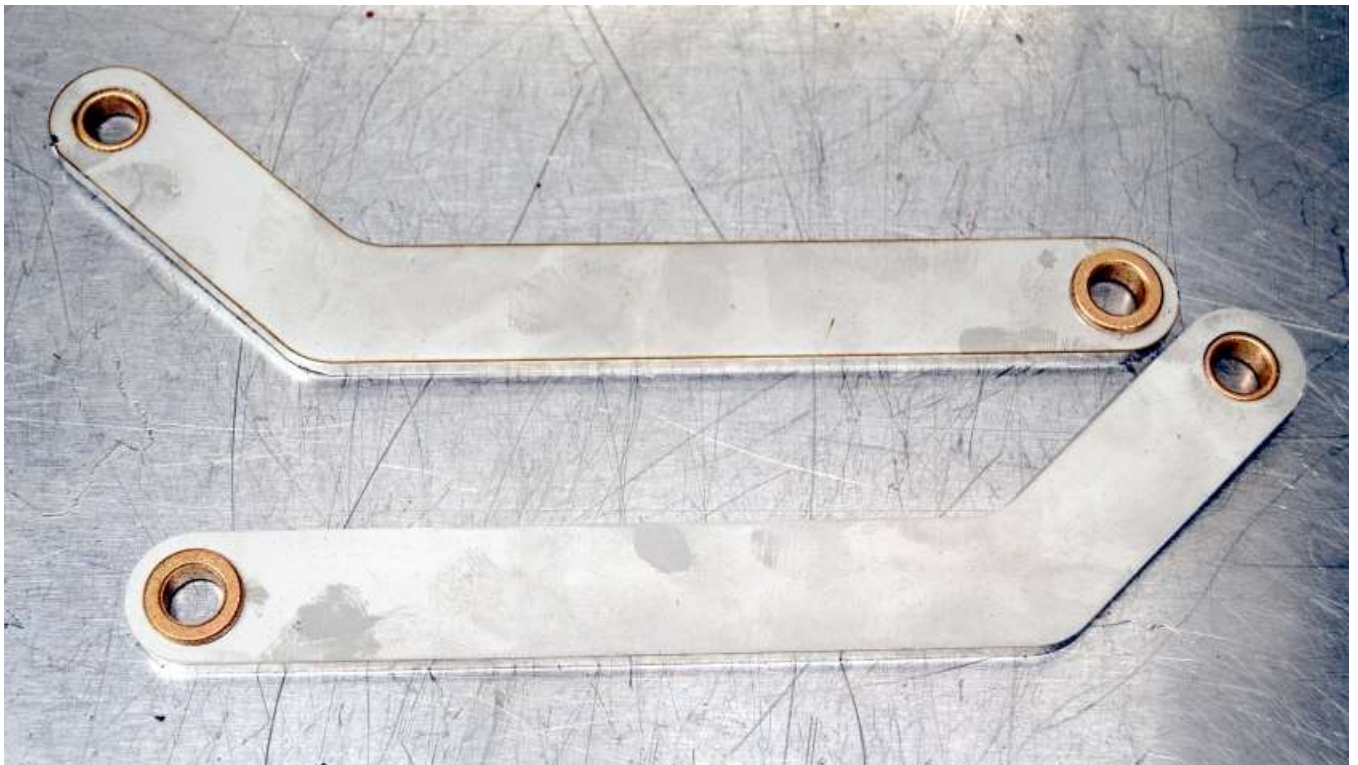
PART PREP



Push the bronze bushings into the hood mounts, note the direction of the bushings.



Push the bronze bushings into the upper hinge arms, note the direction of the bushings.



Push the bronze bushings into the lower hinge arms, note the direction of the bushings.



Push the bronze bushings into the hinge mounts, note the direction of the bushings.

ASSEMBLY



Assemble the right-side hinge components, all but the lower hinge mount shoulder bolt are inserted from the top side shown.



Spin on and tighten the 1/2" locknuts using a 3/16" hex key and 1/2" wrench. The arms should just be able to rotate.



Assemble the right-side hinge components, all but the lower hinge mount shoulder bolt are inserted from the top side shown. Tighten the 1/2" locknuts using a 3/16" hex key and 1/2" wrench. The arms should just be able to rotate.



Insert $\frac{1}{4}$ "x $\frac{3}{4}$ " carriage bolts from the top side through the top hinge support square (not rectangle) holes.



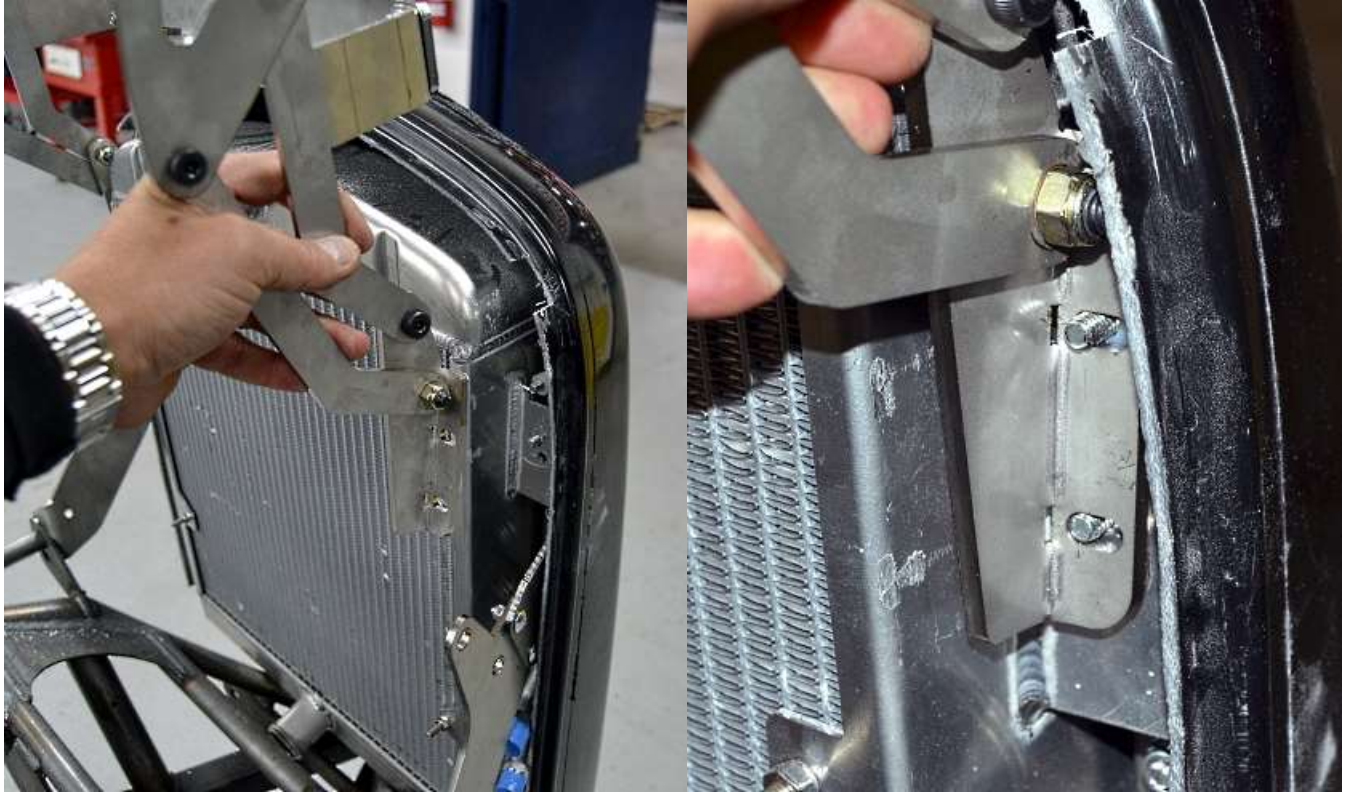
Attach the hinge support to the top side of the left hinge using the $\frac{1}{4}$ " lock nuts and $\frac{7}{16}$ " socket.



Insert $\frac{1}{4}$ "x $\frac{3}{4}$ " carriage bolts from the top side through the hinge support rectangular holes then attach to the right-side hinge with locknuts and $\frac{7}{16}$ " socket leaving the locknuts just loose enough for the plates to slide.



Assembled hinge.



Hold the hinge mounts up to radiator top mounts.



Attach the hinge to the radiator using 1/4" locknuts and 7/16" socket.



Put the hood on the car.



Hold the hood mount up to the bottom of the hood then use a marker to mark the slots.



Remove the hood, drill $\frac{25}{64}$ " holes at the center of the slot lines and install kit rivnuts.



Place the hood back onto the car and attach the hinge to the hood using kit $\frac{1}{4}$ " x 1" flanged button head screws.



With the hinge attached to the hood tighten the locknuts on the hinge top support rectangular holes.



Open the hood and check clearance of the hood to grill surround while opening. If adjustment is needed, slide the hood back or enlarge the gap at the front of the hood.

Install the striker, latch and support rod according to the assembly manual.