



Factory Five Racing, Inc.

Part Number: 33803	Revision: F	Effective Date: 06/29/20	By: J. INGERSLEV
Document Type (indicate):	<input type="radio"/> Bill of Material	<input type="radio"/> Drawing (may be attached)	<input type="radio"/> Specification
	<input checked="" type="radio"/> Assembly Instructions	<input type="radio"/> Operating Procedure	<input type="radio"/> Other

Hot Rod

Small Block Chevy

Installation Instructions

Parts Needed



Short Style Water pump and pulleys – application 1968 350ci Camaro



Ram horn headers –Flowtech 11704.



Bellhousing - Trans fitment – Chevy TKO (6.29”), LS1 T-56 (5.95”), TH350 (6.576”). We suggest the Silver Sport Transmissions 621 Aluminum bellhousing for BB/SB Chevy w/o inspection cover. Trans fitment - Chevy TKO. shiftsst.com - \$269.95



Pilot Bearing - Small bearing (GM# 14061685, Timken 57080, Morosso 41100). It was used in all of the RWD LS V8 cars that GM made from 97-04 in the Y body, 98-02 in the F body and 04-06 in the GTO.

Summit racing \$14.95

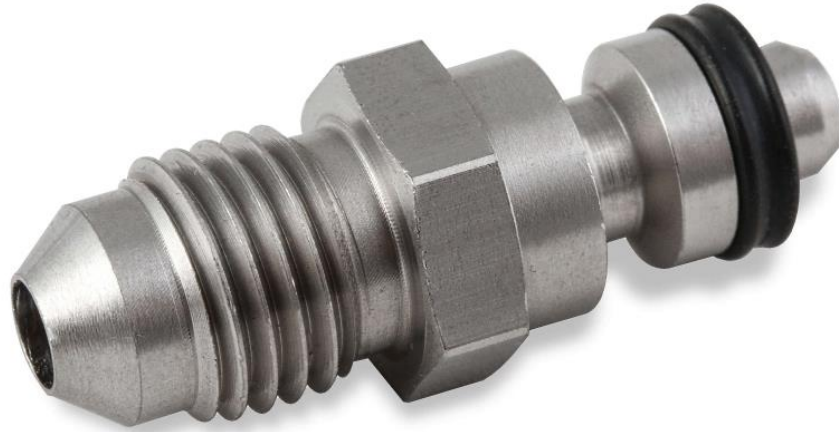
Flywheel - 168 tooth flywheel

Clutch - 26 spline clutch



Clutch slave cylinder – Dorman CS360058 - \$48.99

Wilwood Master cylinder – FFR 16255 - \$70



Slave to 4AN hose adapter – Earls LS641001ERL - \$13.67

NPT to 4AN Master cylinder adapter – FFR 16429 - \$9

Reservoir kit – FFR – 34168 - \$62

4AN hose – FFR – 16428 - \$32



Transmission - GM TKO 500 or 600

Installation



Make sure there is no pilot bearing in the end of the crank shaft already.

Install your flywheel and clutch.

Attach the bellhousing to the engine. Keep in mind, not all of the bolts holes on the engine will be used.

Attach the transmission to the engine.

Attach the polyurethane engine mount to the $\frac{1}{4}$ " plate using a $\frac{3}{8}$ "x 1" bolt provided.

Attach the $\frac{1}{8}$ " engine mount backing plate and polyurethane engine mount to the engine using the M10 bolts provided.

Use the following diagrams to attach the engine mount side plates and spacers to the engine.



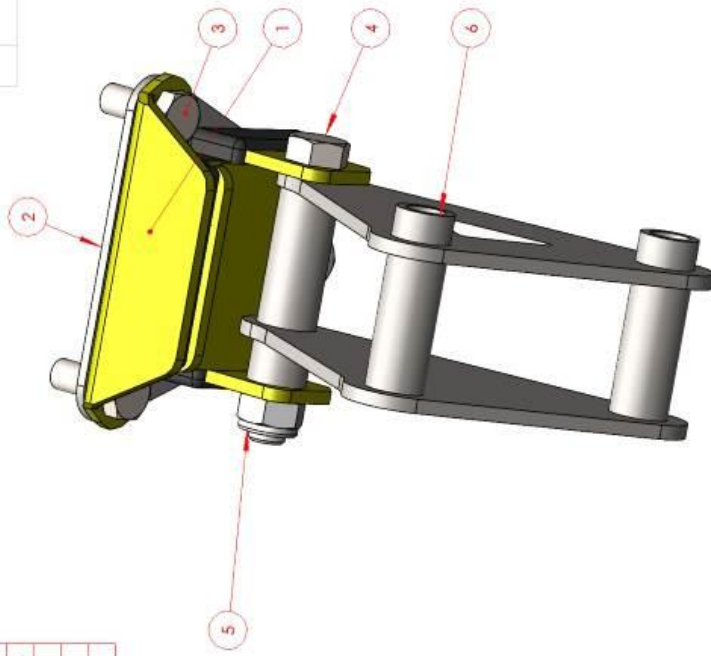
The triangular cut-out on the bolt-on mount is the backside.



Leave the long bolt slightly loose to allow movement and easier alignment when installing the engine.

ITEM NO.	PART NUMBER	DESCRIPTION	QTY.
1	33771	ENGINE MOUNT	1
2	35132	SBC ENGINE MNT BACKING PLATE	1
3	16003	M10-1.25 x 25MM BOLT	3
4	13752	M12 x 90MM BOLT	1
5	13751	M12-1.75 NYLON LOCK NUT	1
6	35133	SBC RIGHT ENGINE MNT	1

REV.	DESCRIPTION	DATE	APPROVED
A	INITIAL RELEASE	6/29/20	

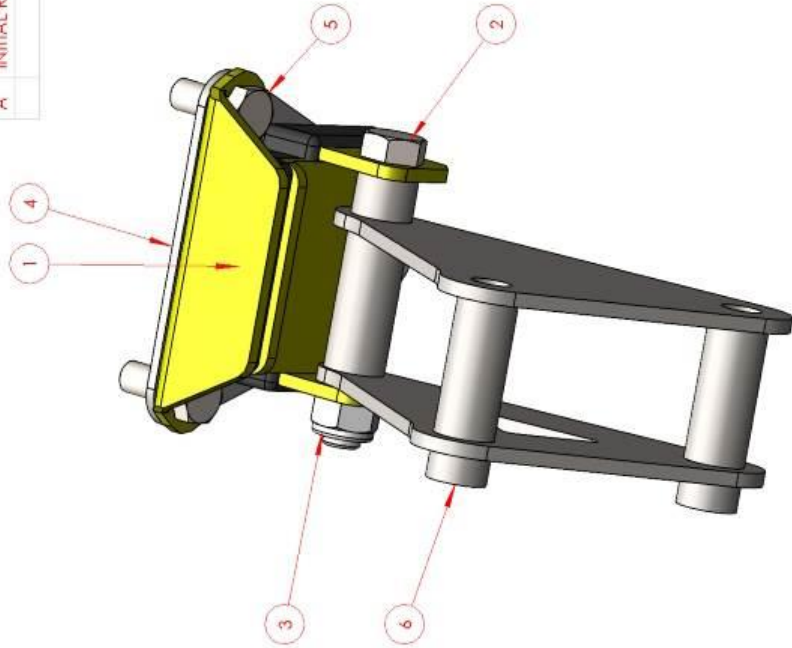


HOT ROD		UNLESS OTHERWISE SPECIFIED:	DATE	Factory Five Racing, Inc.	
35 TRUCK		DIMENSIONS ARE IN INCHES	6/29/20		
		TOLERANCES:	NAME	TITLE:	
		TWO PLACE DECIMAL +0.01	JJ	LEFT SIDE ASSEMBLY	
		THREE PLACE DECIMAL +0.005	DRAWN	SIZE	DWG. NO.
		FOUR PLACE DECIMAL -0.001	COMMENTS:	A	35129
		MATERIAL:		SCALE: 1:2	WEIGHT:
		FINISH:		PRINTED	SHEET 1 OF 2
USED ON:			6/30/2020		
APPLICATION:					
SBC ENGINE					

PROPRIETARY AND CONFIDENTIAL
 THE INFORMATION CONTAINED IN THIS DRAWING IS THE SOLE PROPERTY OF FACTORY FIVE RACING, INC. ANY REPRODUCTION IN PART OR AS A WHOLE WITHOUT THE WRITTEN PERMISSION OF FACTORY FIVE RACING, INC. IS PROHIBITED.

ITEM NO.	PART NUMBER	DESCRIPTION	QTY.
1	33771	ENGINE MOUNT	1
2	13752	M12 x 90MM BOLT	1
3	13751	M12-1.75 NYLON LOCK NUT	1
4	35132	SBC ENGINE MNT BACKING PLATE	1
5	16003	M10-1.25 x 25MM BOLT	3
6	35134	SBC RIGHT ENGINE MNT	1

REV.	DESCRIPTION	DATE	APPROVED
A	INITIAL RELEASE	6/29/20	



UNLESS OTHERWISE SPECIFIED:		NAME	DATE
DIMENSIONS ARE IN INCHES		JL	6/29/20
TOLERANCES:		DRAWN	COMMENTS:
TWO PLACE DECIMAL ±0.01			
THREE PLACE DECIMAL ±0.005			
FOUR PLACE DECIMAL ±0.001			
MATERIAL			
FINISH			
USED ON		PRINTED	6/30/2020
APPLICATION			
SBC ENGINE			

Factory Five Racing, Inc.



TITLE:

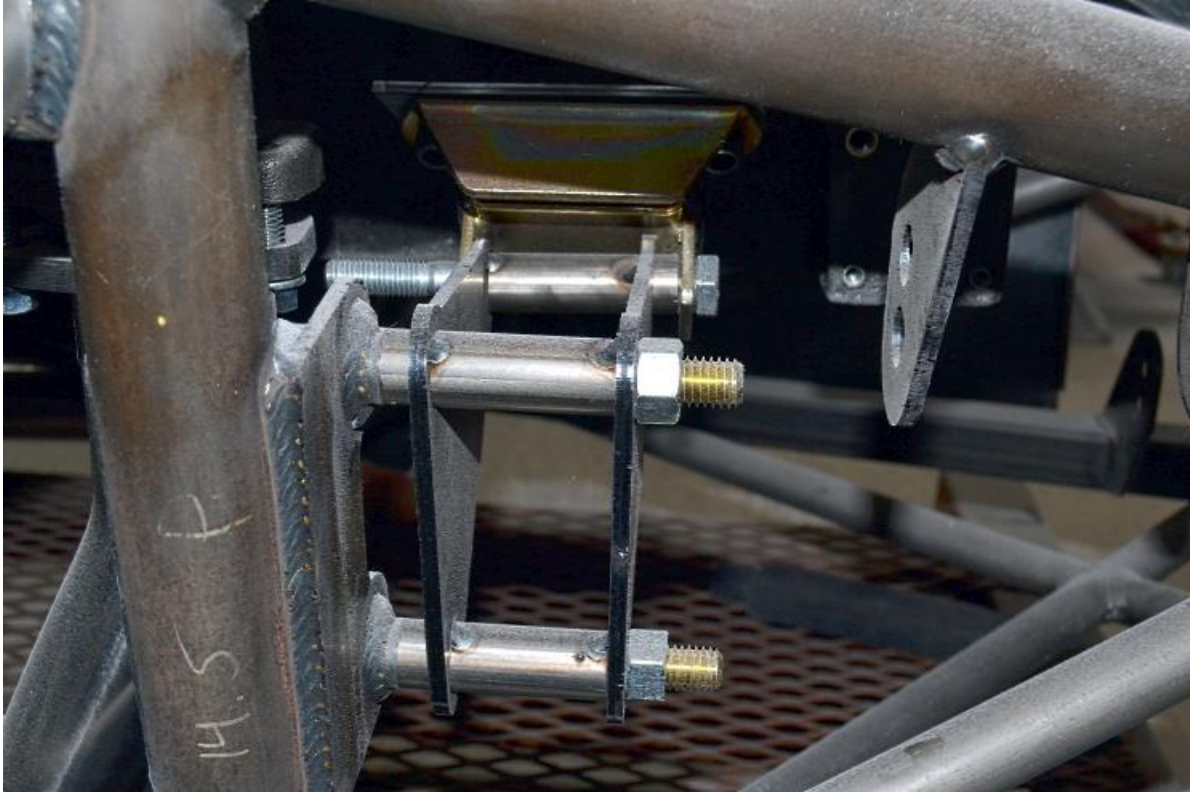
RIGHT SIDE ASSEMBLY

SIZE DWG. NO. REV
A 35129 A

SCALE: 1:2 WEIGHT: SHEET 2 OF 2

PROPRIETARY AND CONFIDENTIAL
 THE INFORMATION CONTAINED IN THIS DRAWING IS THE SOLE PROPERTY OF FACTORY FIVE RACING, INC.. ANY REPRODUCTION IN PART OR AS A WHOLE WITHOUT THE WRITTEN PERMISSION OF FACTORY FIVE RACING, INC., IS PROHIBITED.

Install the engine and transmission.



Attach the engine side plates to the frame using the bolts provided. Right side shown.

ITEM NO.	PART NUMBER	DESCRIPTION	QTY.
1	34472	GM TRANSMISSION MOUNT ADAPTER	1
2	Polyurethane Transmission Mount		1
3	14530	3/8"-14 x 1.25" FLANGE HEAD BOLT	2
4	10634	NYLON INSERT LOCKNUT 1/2-13 UNC	2
5	12386	1/2"-13 x 2.50" BOLT	2
6	34474	1.2500" SPACER	2

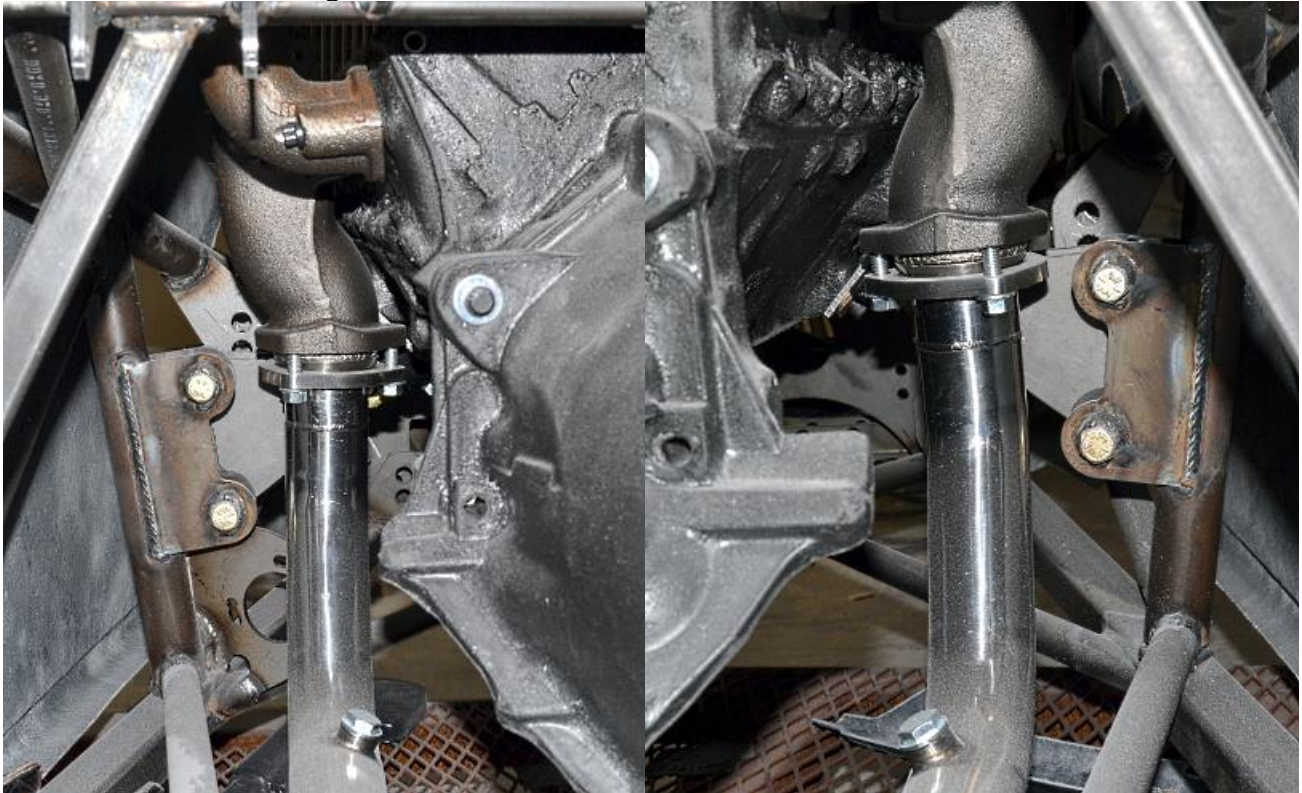
REV	DESCRIPTION	DATE	APPROVED
A	INITIAL RELEASE	8/30/18	

PROPERTY AND CONFIDENTIAL	UNLESS OTHERWISE SPECIFIED:	NAME	DATE
THE INFORMATION CONTAINED IN THIS DRAWING IS THE SOLE PROPERTY OF FACTORY FIVE RACING, INC. ANY REPRODUCTION IN PART OR AS A WHOLE WITHOUT THE WRITTEN PERMISSION OF FACTORY FIVE RACING, INC. IS PROHIBITED.	DIMENSIONS ARE IN INCHES TOLERANCES TWO PLACE DECIMAL: +0.01 THREE PLACE DECIMAL: ±0.006 FOUR PLACE DECIMAL: ±0.0005	DRAWN JI	8/00/18
	MATERIAL FR30	COMMENTS	
USED ON	FINISH		
APPLICATION	PRINTED		8/00/2018

Factory Five Racing, Inc.	
TITLE: GM TRANS MOUNT ADAPTER COMPONENT	
SIZE	DWG. NO.
A	33986
SCALE: 1:2	WEIGHT:
	SHEET 1 OF 1

If using a GM transmission, assemble the transmission mount as shown and attach to the transmission and frame.

Attach the headers to the engine.



Attach the connector pipes to the kit exhaust system.



Attach the connector pipes to the kit exhaust system.

