







Factory Five Racing, Inc.

Part Number: <u>16686</u>	Revision: <u>E</u>	Effective Date: <u>5/10/21</u>	By: <u>J. Ingerslev</u>
Document Type (indicate):			
<input type="radio"/> Bill of Material	<input type="radio"/> Drawing (may be attached)	<input type="radio"/> Specification	
<input checked="" type="radio"/> <b>Assembly Instructions</b>	<input type="radio"/> Operating Procedure	<input type="radio"/> Other	

# 11.65” Rear Brakes

## Installation instructions



-  These instructions apply to any 1986-2004 Ford Mustang 8.8 rear axle with Traction-Lok differential (FFR#s 14319,14970) using FFR disc brakes (FFR# 16285 11.625”)
-  The installation of this kit can be performed by anyone with an average amount of mechanical experience, but it is very important to follow the instructions and refer to a Mustang Shop Manual or equivalent. If you do not feel comfortable after reading the instructions and the shop manual, have the installation performed by an experienced mechanic.
-  Improper installation of this kit could adversely affect the safety of your vehicle
-  **✘** Torque Wrench, 8mm, 1/2”, 9/16”, 3/4” sockets, Ratchet, 9/16” wrench, Needle nose pliers, Small flat head screwdriver, (2) Jack stands

### TABLE OF CONTENTS

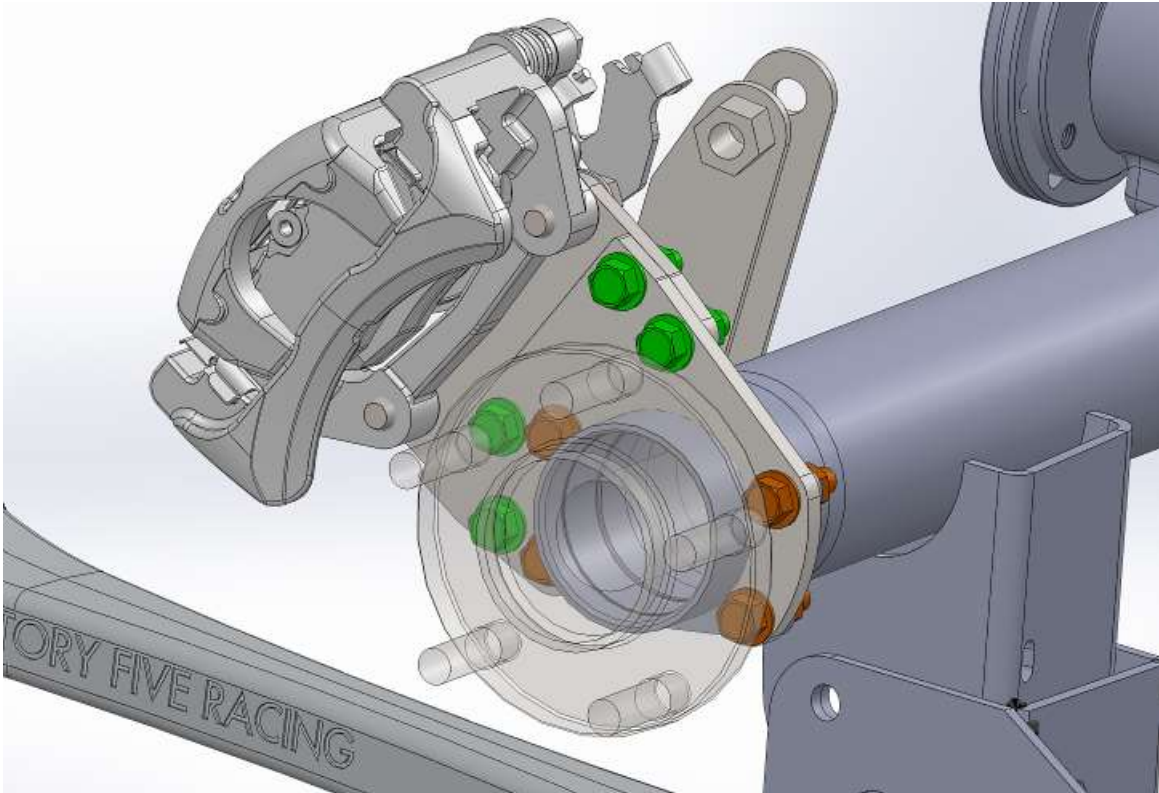
Installation instructions.....1

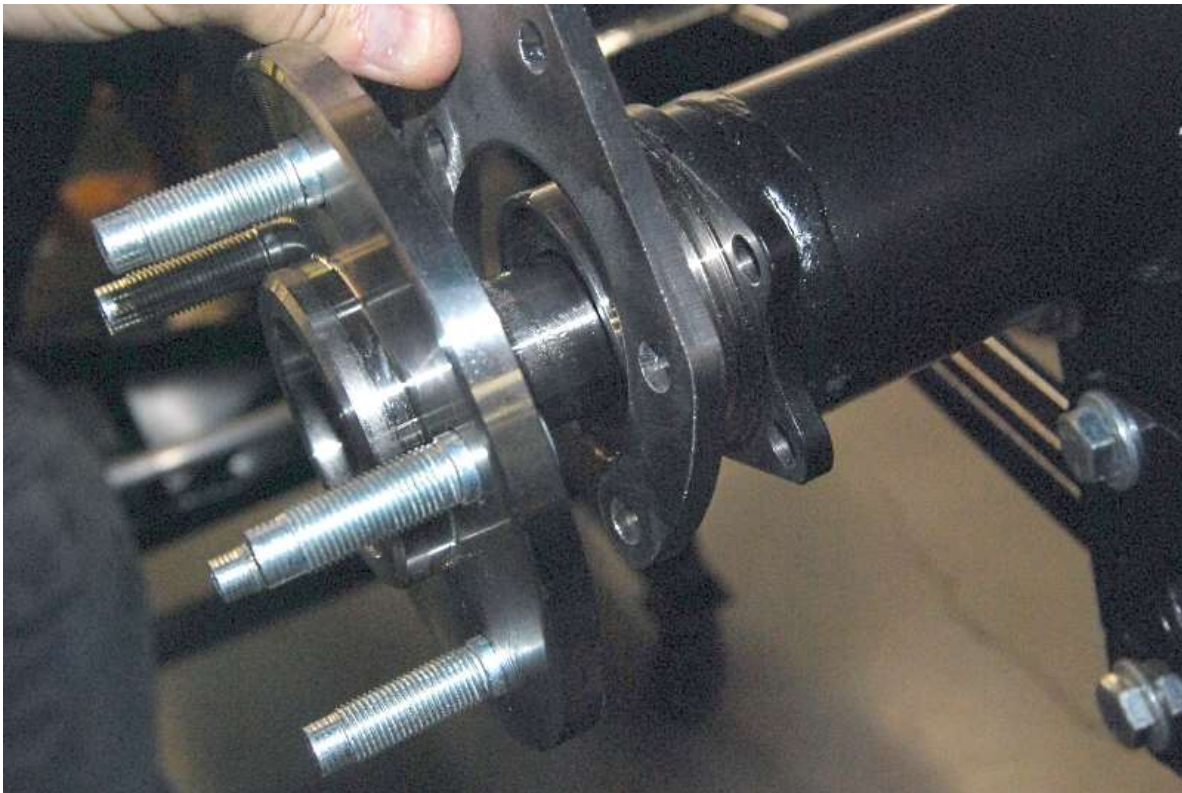
Supplies .....	2
Bracket Install .....	2
Pad install .....	8
Torque Specifications: .....	14

**SUPPLIES**

Brake Fluid

**BRACKET INSTALL**

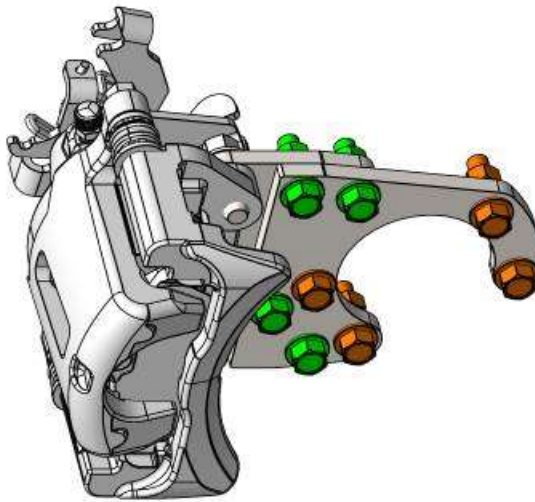
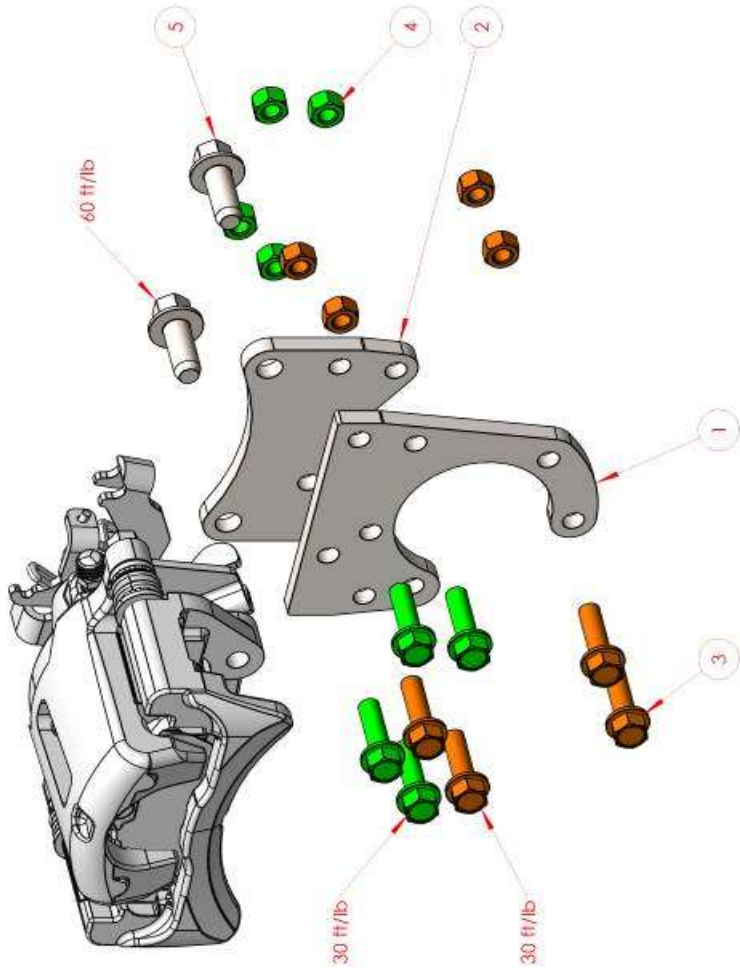




Place the caliper “C” shaped caliper axle mount bracket over the Axle so that the open part of the bracket is facing down.

REV.	DESCRIPTION	DATE	APPROVED

ITEM NO.	PART NUMBER	DESCRIPTION	QTY.
1	15571	REAR CALIPER AXLE MOUNT BRACKET	1
2	16244	1 1/4" REAR CALIPER TO MOUNT BRACKET	1
3	14530	3/8"-16 x 1.25" FLANGE HEAD BOLT	8
4	12172	3/8"-16 MECHANICAL LOCK NUT	8
5	80316	M12-1.75 x 25MM BOLT	2



**Factory Five Racing, Inc.**



TITLE:

**REAR BRAKE CALIPER MOUNT**

SIZE DWG. NO.

REV

**A REAR BRAKES**

**A**

SCALE: 1:3 WEIGHT: 3.43 SHEET 1 OF 1

UNLESS OTHERWISE SPECIFIED:  
 DIMENSIONS ARE IN INCHES  
 TOLERANCES:  
 TWO PLACE DECIMAL ±0.01  
 THREE PLACE DECIMAL ±0.005  
 FOUR PLACE DECIMAL ±0.001

ROADSTER  
 COUPE  
 HOT ROD  
 35 TRUCK  
 USED ON  
 APPLICATION  
 REAR BRAKES

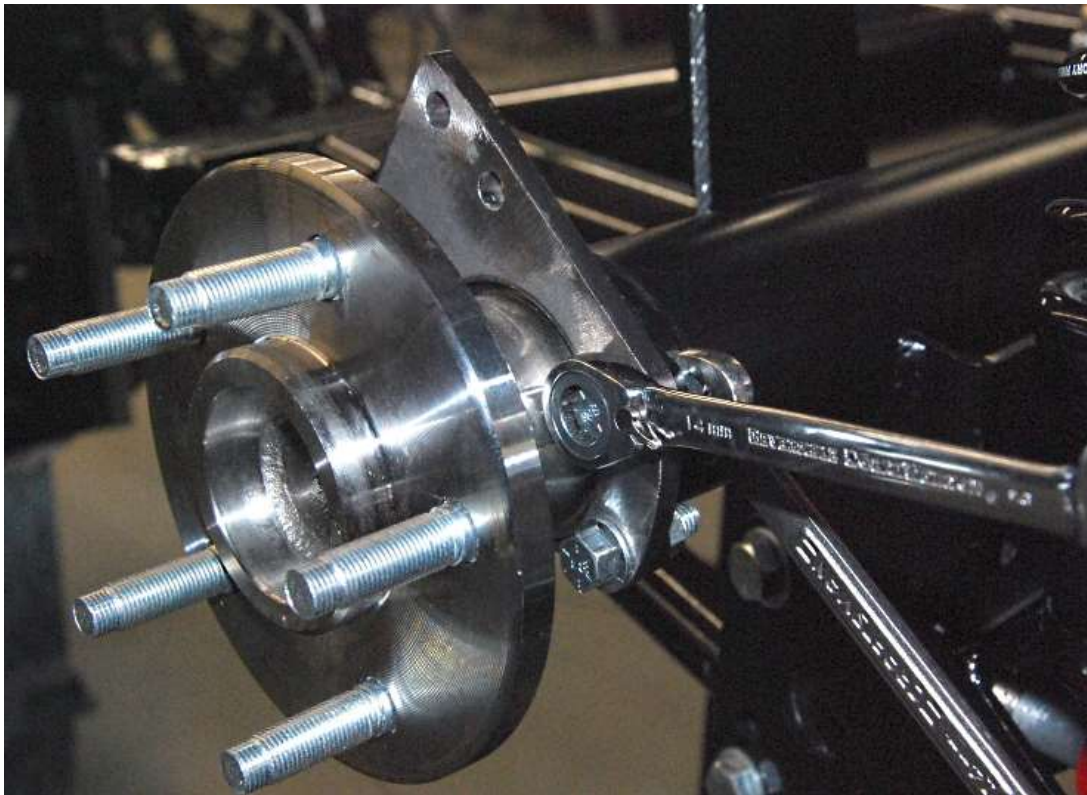
PRINTED 5/10/2021

PROPRIETARY AND CONFIDENTIAL  
 THE INFORMATION CONTAINED IN THIS  
 DRAWING IS THE SOLE PROPERTY OF  
 FACTORY FIVE RACING, INC. ANY  
 REPRODUCTION IN PART OR AS A WHOLE  
 WITHOUT THE WRITTEN PERMISSION OF  
 FACTORY FIVE RACING, INC. IS  
 PROHIBITED.

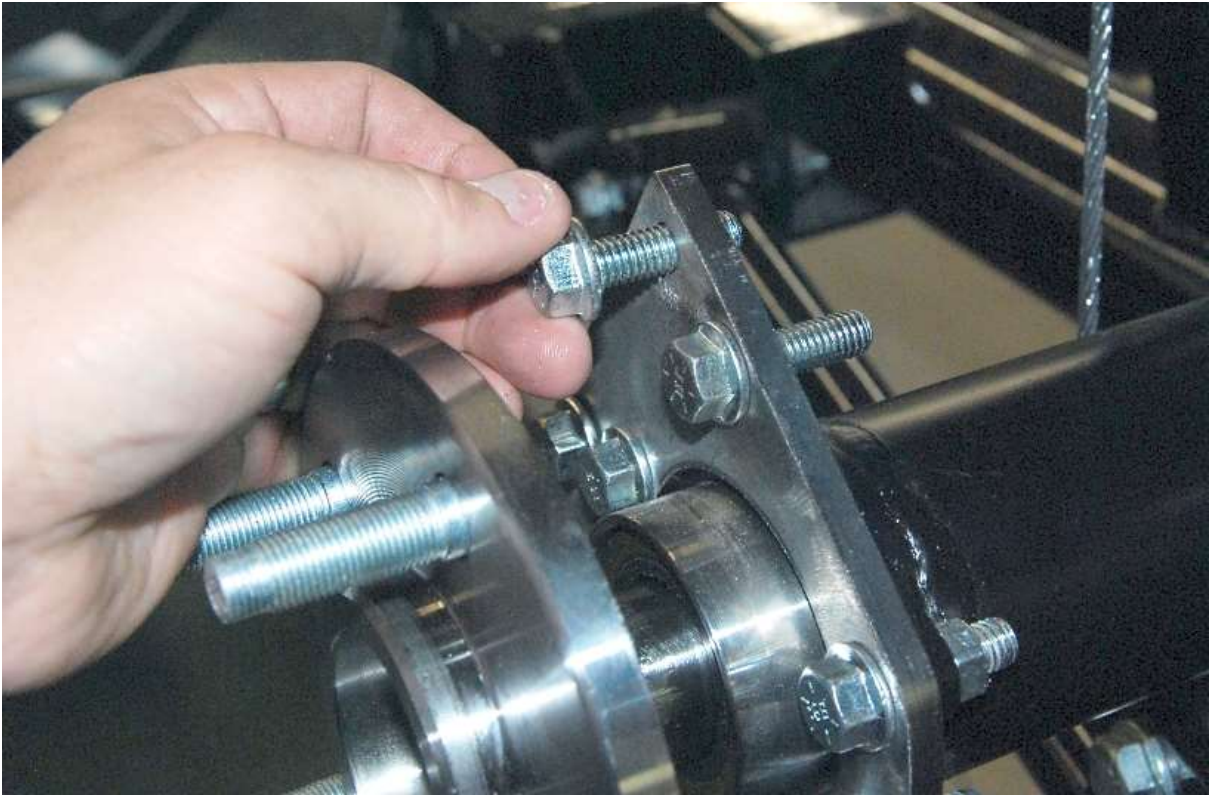
DRAWN JJ DATE 5/9/13  
 COMMENTS:  
 MATERIAL:  
 FINISH:



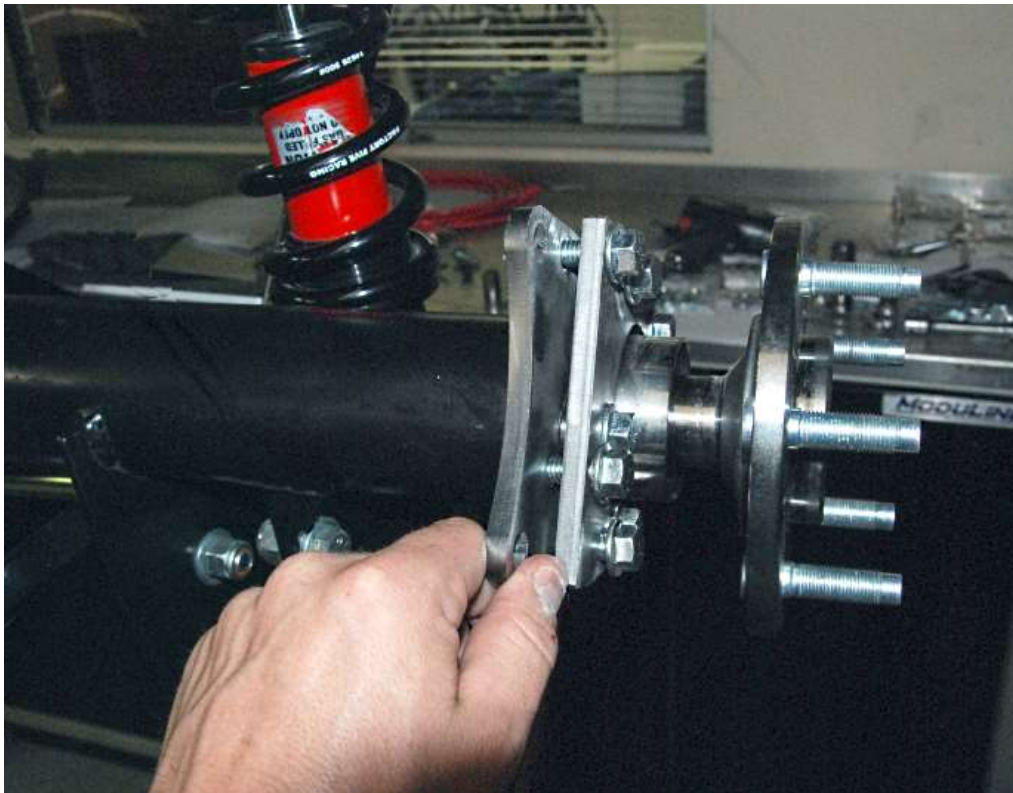
Insert the caliper axle mount bracket bolts from the outside in.



Torque the caliper bracket to 30 ft-lbs.



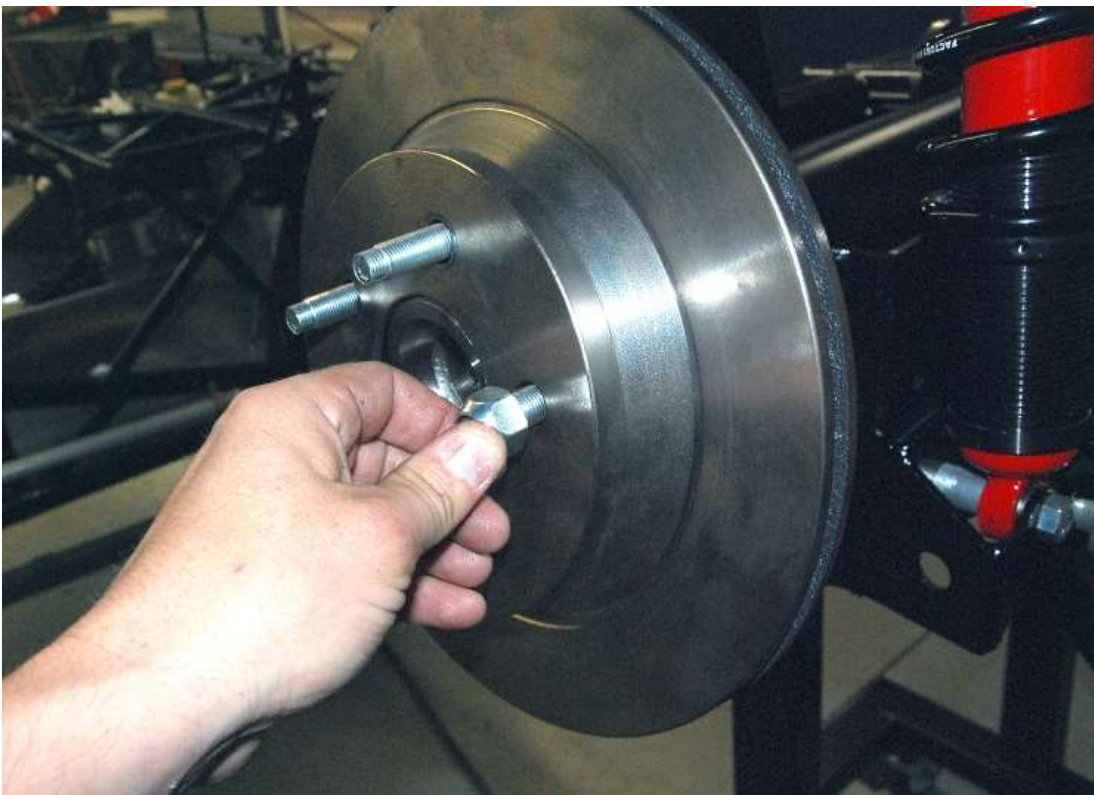
Insert the caliper mount bracket bolts from the outside in through the four remaining bracket holes.



Slide the caliper mount bracket onto the four bolts.



Torque the mounting bolts to the same 30 ft-lbs.



Next install the brake rotor using one lug nut to hold it in place. Make sure to clean the surface of the rotor with brake parts cleaner before installing the caliper.

## PAD INSTALL

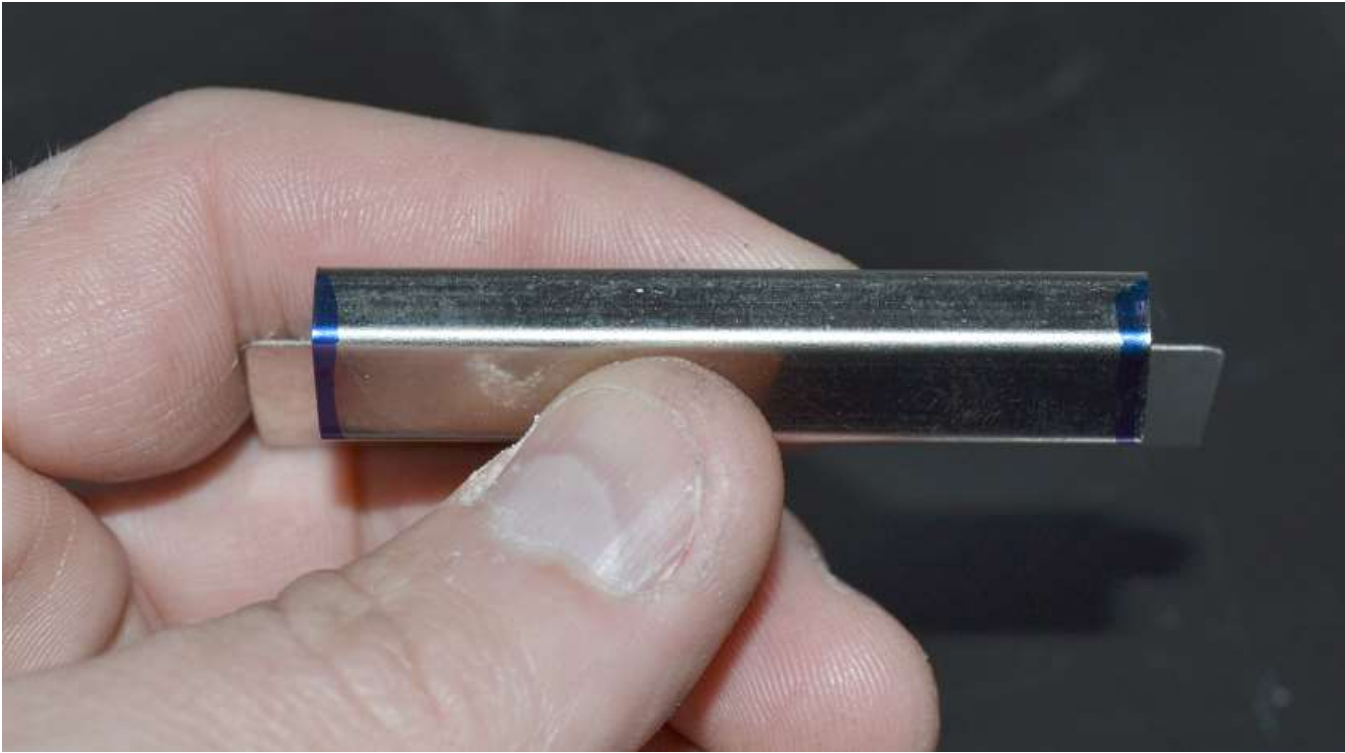


Insert one of the metal clips into the caliper and hold in place.



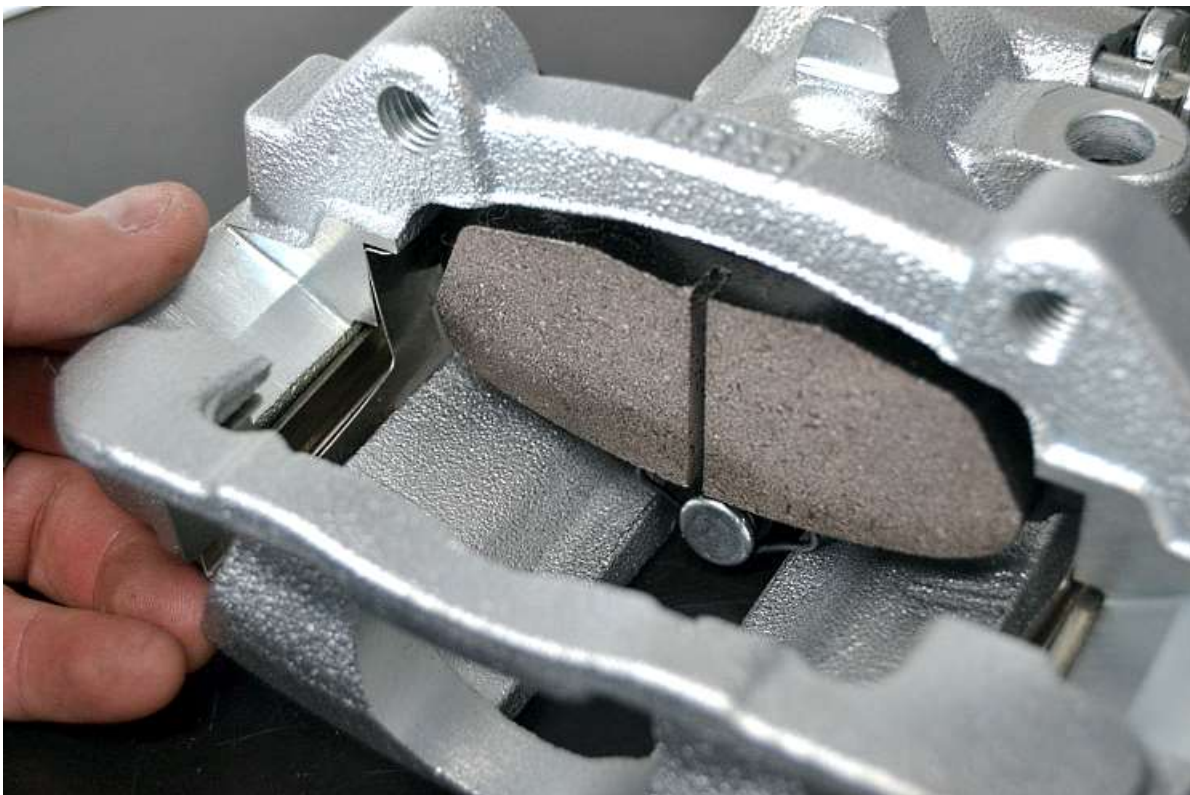
Looking from the top, the clip might get held out from the mounting surface in the corners.



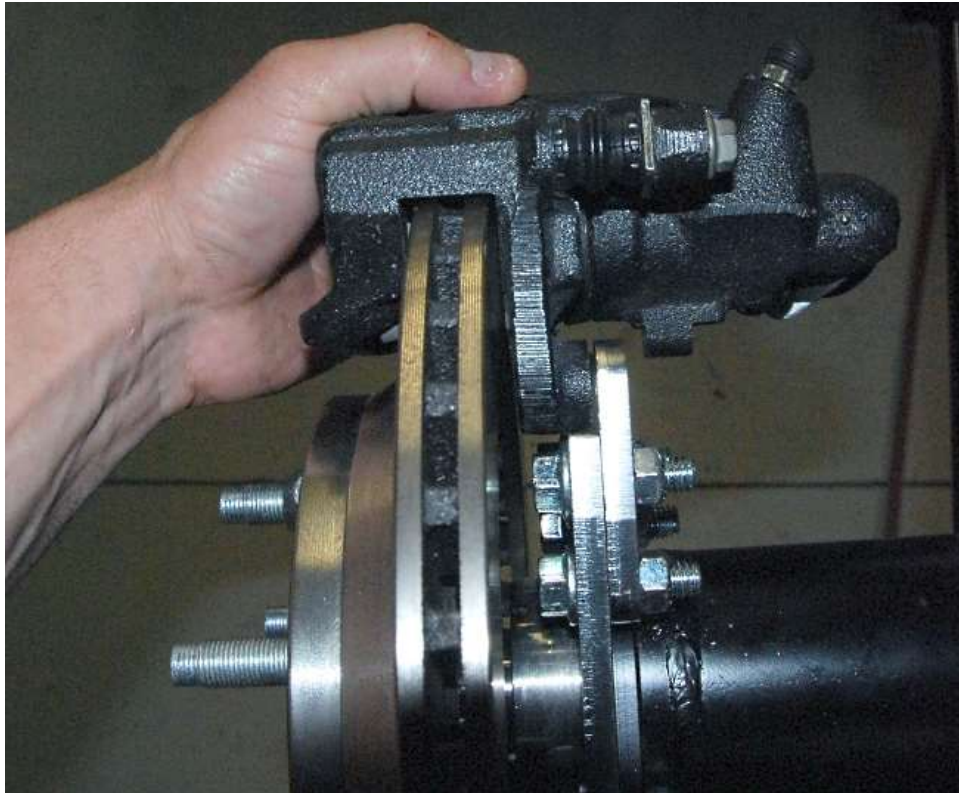




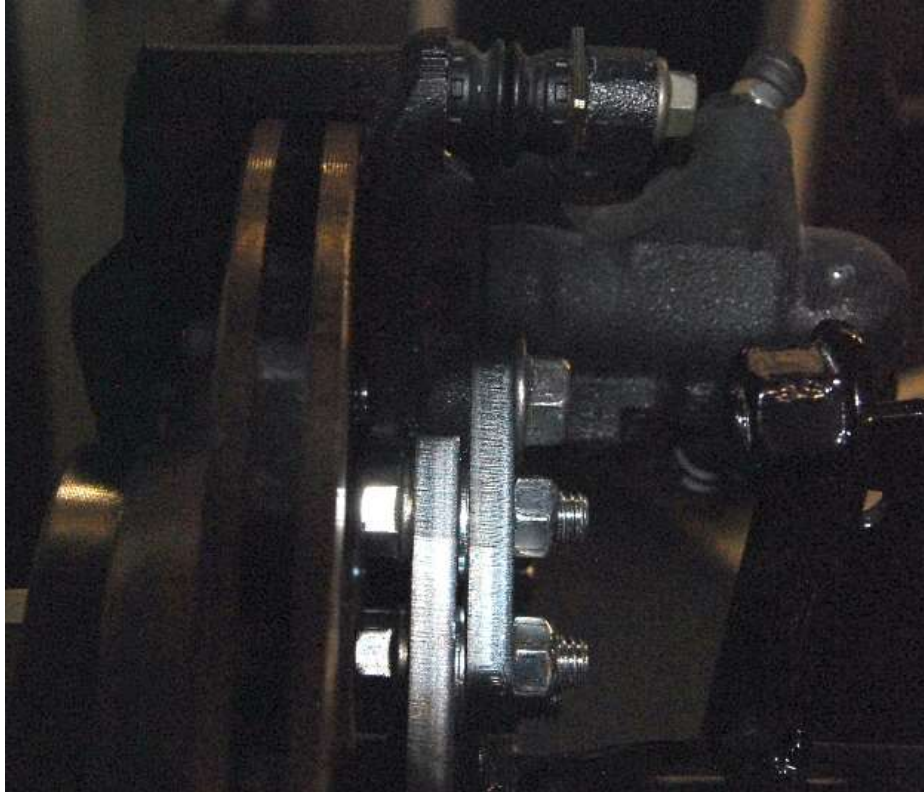
Trim the clip vertically so that it fits and doesn't slide out.



Put the brake pads in the caliper by pushing down on the pad to compress the wire springs on the top of the pad, and then slide them into the slots in the caliper bracket.



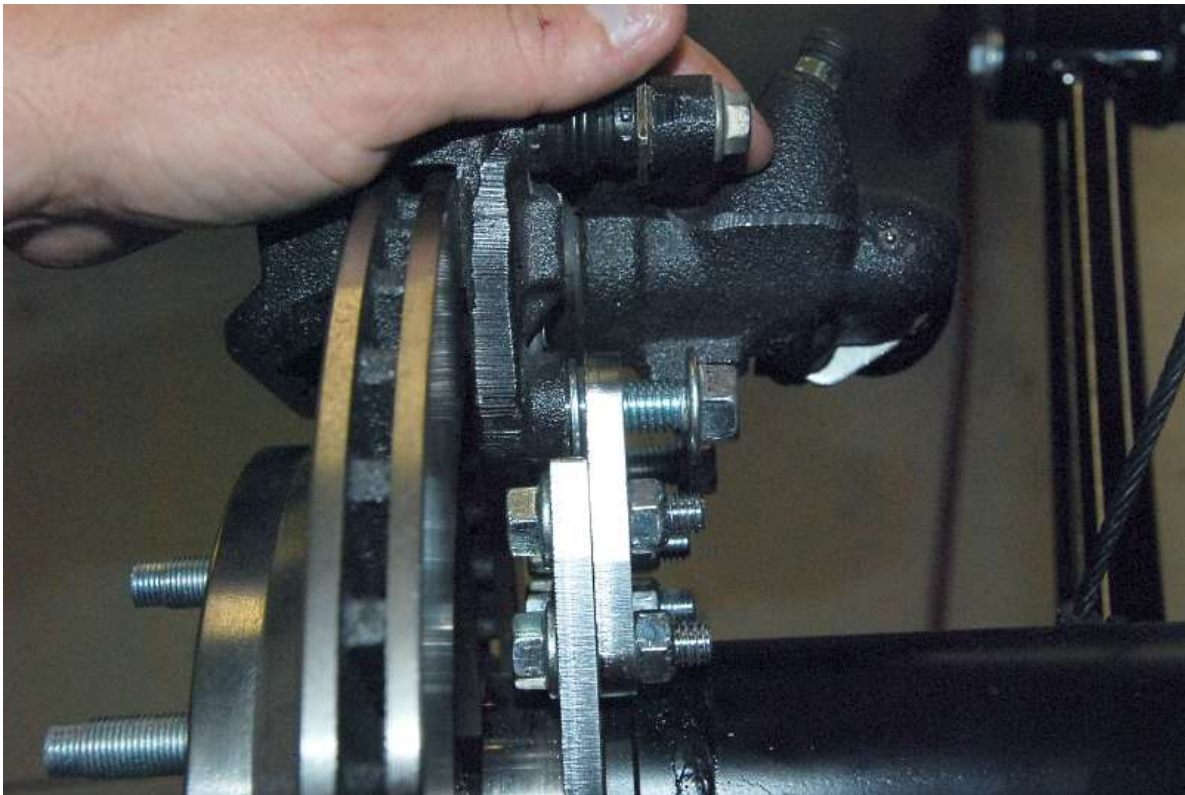
When installing the caliper make sure that the brake fluid bleed screw is on the top side of the caliper. Do not worry about the LH/RH markings on the calipers.



Make sure the caliper bracket is centered over the rotor then check to see if a spacer is needed between the caliper bracket and the caliper mount bracket or between the two brackets.

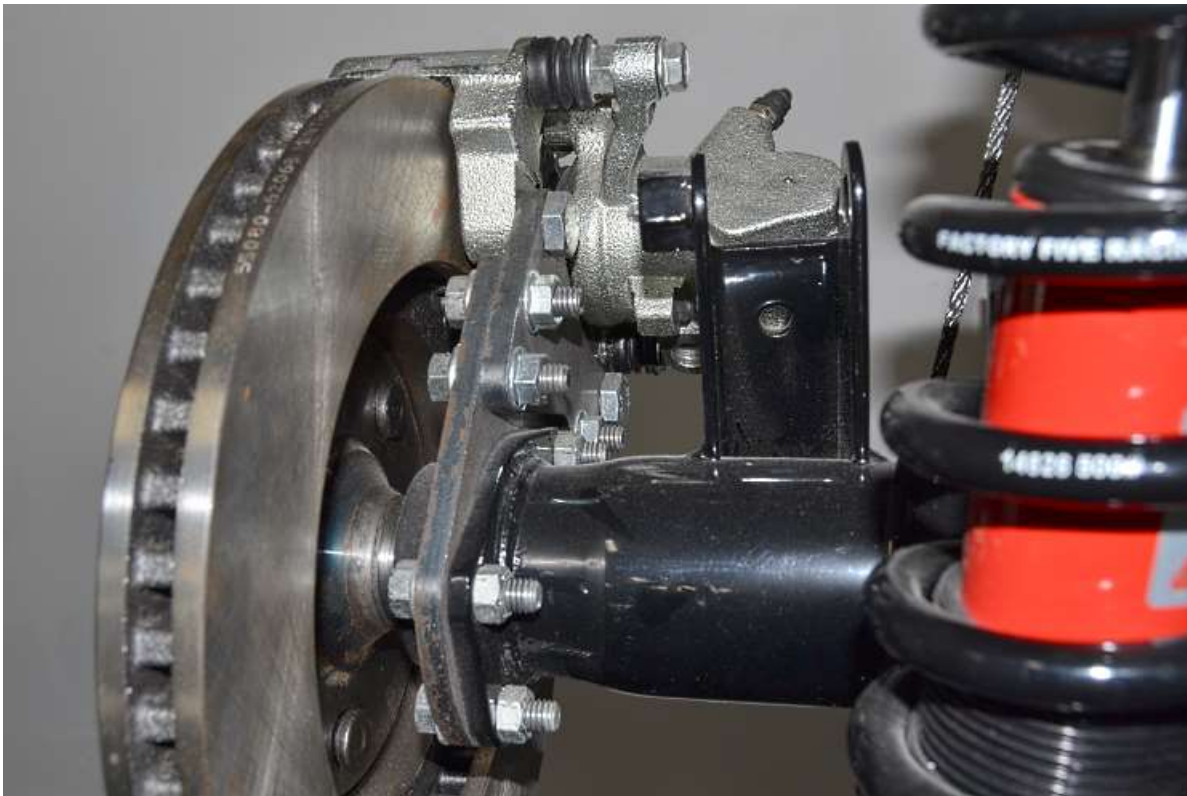


If needed remove the caliper and slide the shim onto the bolt.



Recheck the clearance between the caliper bracket and rotor.

Tighten and torque the two 12mm mounting bolts to 60ft/lb using a 3/4" socket.



If not already done, fill the rear axle with fluid and seal the cover with RTV silicone.

**TORQUE SPECIFICATIONS:**

<b>FASTENER</b>	<b>TORQUE (FT./LBS.)</b>
BANJO BOLTS	32
WHEEL NUTS	90
AXLE ADAPTER/REARBACKING PLATE BOLTS	30
AXLE HOUSING COVER BOLTS	25-35
AXLE FILL PLUG	15-30
CALIPER MOUNTING BOLTS	60