



Factory Five Racing, Inc.

Part Number: 16887 Revision: A Effective Date: 9/20/19 By: J. INGERSLEV & JON DEAN

Roadster/Coupe LS Engine

INSTALLATION INSTRUCTIONS

Table of Contents

Parts needed	1
Installation.....	4
Pilot Bearing, flywheel, clutch	4
Engine Mounts	5
Engine install	7

Parts needed

Engine mount kit

Factory Five Racing without kit – 16780
Factory Five Racing with kit – 16787

Exhaust Headers

Factory Five Racing without kit – 16812
Factory Five Racing with kit – 16813

Oil Pan/Dip stick, windage tray, pick-up tube



2005-2013 C6 LS Corvette, **CANNOT** be any deeper

<http://www.improvedracing.com/oil-pan-swap-kits/complete-oil-pan-swap-kit-for-ls2-ls3-c6-corvette-p-381.html> - \$486.95

Bellhousing



Quicktime Bellhousing for LS to Ford TKO. RM-6037

Summit Racing - \$769.95

Pilot Bearing



Lakewood 15975. For adapting chevy engine to Ford trans.

Summit Racing \$42.65

Flywheel

168 tooth flywheel

Clutch

11" 26 spline clutch

The Clutch can either be Hydraulic or cable

Hydraulic clutch actuator

Hydraulic throwout bearing, ¾" master cylinder, reservoir and braided stainless steel lines.

Factory Five Racing - \$485

Cable clutch

Clutch Fork – 1996-2004 Mustang. Summit Racing - PIO-CF-155 \$40.99

Transmission



Ford TKO 500 or 600.

Factory Five Racing - \$2595

EFI Standalone wiring harness

<https://www.psiconversion.com> – Call and talk about the engine/trans combination you have.

Installation

PILOT BEARING, FLYWHEEL, CLUTCH



Make sure there is no pilot bearing in the end of the crank shaft already.

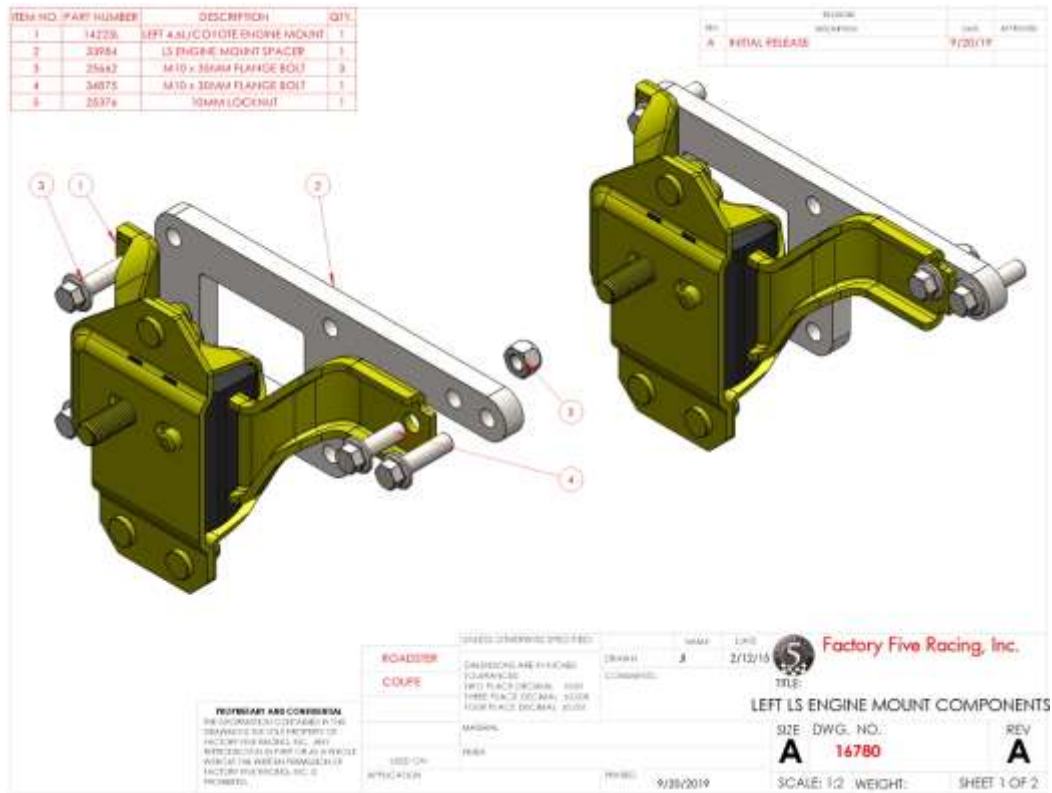


Install the pilot bearing so that it is flush with the stepped area.

Install the Bellhousing front shield.
 Install your flywheel and clutch.
 Attach the bellhousing to the engine.
 Attach the transmission to the engine.

ENGINE MOUNTS

Use the following diagrams to attach the engine mount adapter plates to the engine.



Attach the left side polyurethane mount to the adapter bracket.



Attach the engine mount to the engine. There are multiple holes to accommodate the different year LS blocks.

ENGINE INSTALL

Drop the engine/transmission into the frame.



Attach the headers to the engine.